

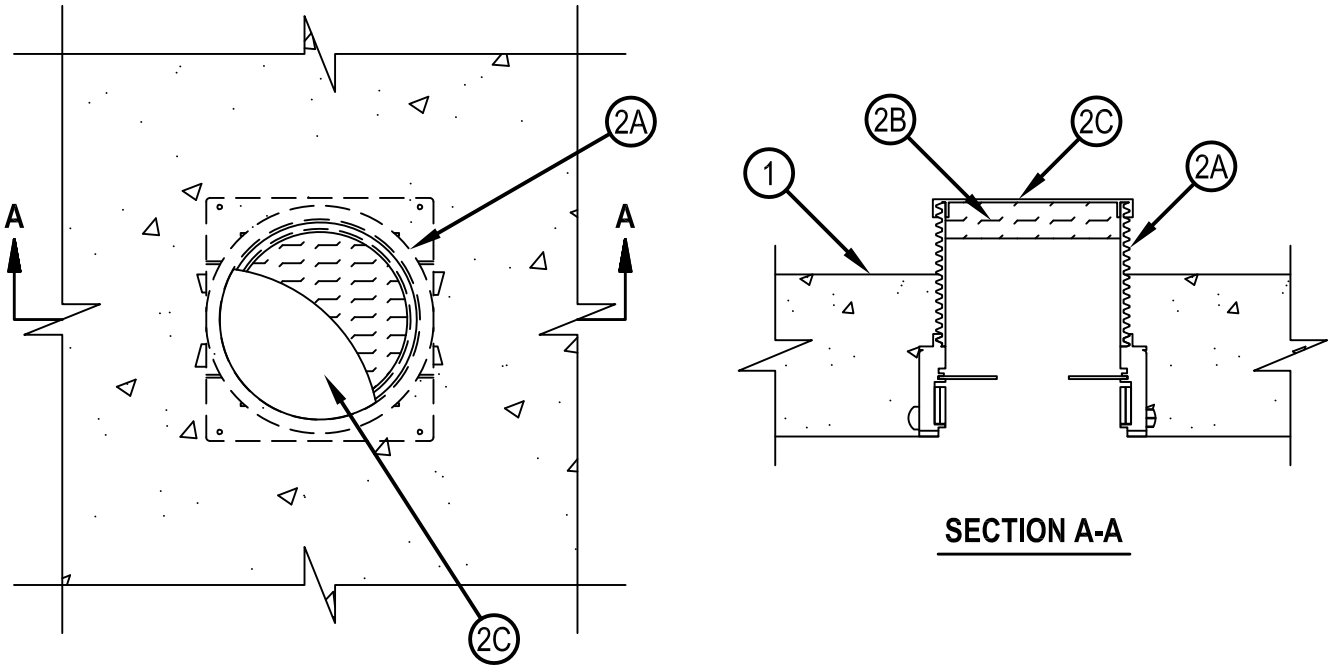


Classified by
Underwriters Laboratories, Inc.
to UL 1479 and CAN/ULC-S115

System No. F-A-0014

FA 0014

ANSI/UL1479 (ASTM E814)	CAN/ULC S115
F Rating — 3 Hr	F Rating — 3 Hr
T Rating — 3 Hr	FT Rating — 3 Hr
	FH Rating — 3 Hr
	FTH Rating — 3 Hr



1. Floor Assembly — Min 4-1/2 in. (114 mm) thick reinforced lightweight or normal weight (100-150 pcf or 1600-2400 kg/m³) concrete.
- 1A. Steel Floor Unit/ Floor Assembly — (Not Shown) - As an alternate to Item 1, the floor assembly may consist of a fluted steel floor unit/ concrete floor assembly. The floor assembly shall be constructed of the materials and in the manner described in the individual D900 Series Designs in the Fire Resistance Directory and shall include the following construction features:
 - A. Steel Floor and Form Units* — Composite or non-composite 1-1/2 in. to 3 in. (38 to 76 mm) deep fluted galv steel units as specified in the individual Floor-Ceiling Design.
 - B. Concrete — Min 4-1/2 in. (114 mm) thick reinforced lightweight or normal weight (100-150 pcf or 1600-2400 kg/m³) concrete, as measured from the top plane of the floor units.
2. Firestop System — The firestop system shall consist of the following:
 - A. Firestop Device* — Cast in place firestop device permanently embedded during concrete placement or grouted in concrete assembly in accordance with accompanying installation instructions with a max 2 in. (51 mm) projection above the top surface of the floor.
HILTI CONSTRUCTION CHEMICALS, DIV OF HILTI INC — CP 680-110/4"N, CP 682-110/4", CP680 -75/2.5"N, CP 682-75/2.5", CP 680-M 2", CP 680-M 3", CP 680-M 4", CP 680-P 2", CP 680-P 3", CP 680-P 4", CP 680-PX 2", CP 680-PX 3"
 - B. Packing Material — Min 1 in. (25 mm) thickness of min 4 pcf mineral wool batt insulation firmly packed within the top of device (Item 2A), flush with the top surface of the device.
 - C. Firestop Device* - Firestop Device Cap — For CP 680N and 682 devices, plastic cap screwed to firestop device in three places with 3/8 in. long screws. The CP 680-M and -P devices are provided with a plastic cap that is threaded onto top of device.
HILTI CONSTRUCTION CHEMICALS, DIV OF HILTI INC — CP 680-10/4"N Cap, CP 682-110/4" Cap, CP 680 -75/2.5"N Cap, CP 682-75/2.5" Cap, CP 680-M 2, 3 and 4" Caps, CP 680-P 2, 3 and 4" Caps

* Indicates such products shall bear the UL or cUL Certification Mark for jurisdictions employing the UL or cUL Certification (such as Canada), respectively.



Hilti Firestop Systems

Reproduced by HILTI, Inc. Courtesy of
Underwriters Laboratories, Inc.
June 29, 2015