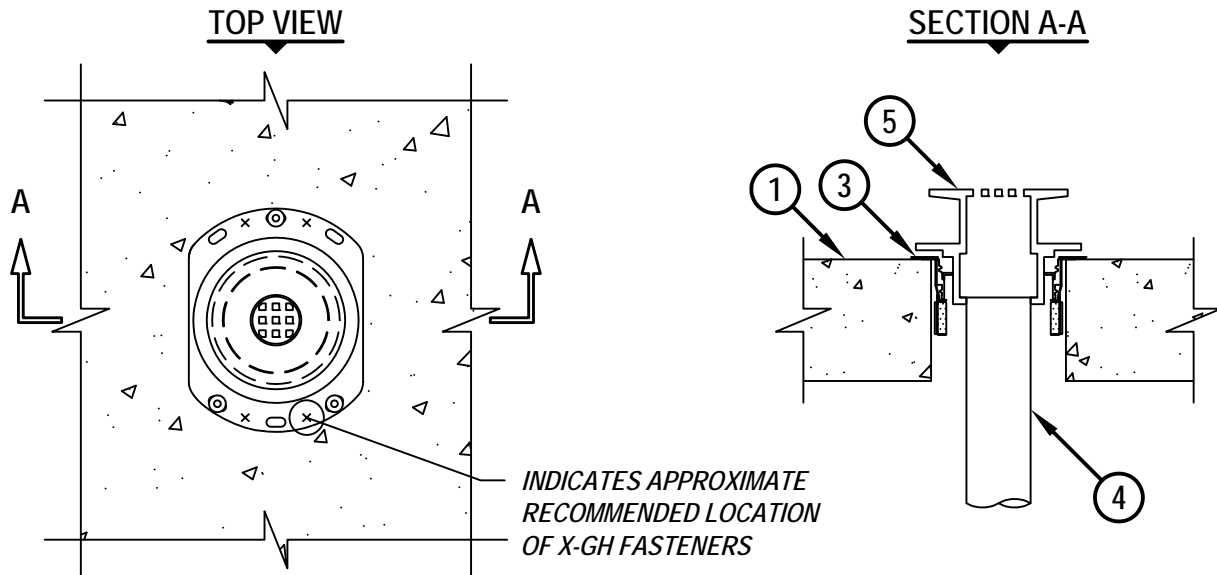


UL SYSTEM NO. F-A-2230

FLOOR DRAIN THROUGH CONCRETE FLOOR ASSEMBLY

F-RATING = 2-HR.

T-RATING = 0-HR.



FA2230a.051214

1. CONCRETE FLOOR ASSEMBLY (2-HR. FIRE-RATING) :
 - A. LIGHTWEIGHT OR NORMAL WEIGHT CONCRETE FLOOR (MINIMUM 4-1/2" TO MAXIMUM 8" THICK).
 - B. STEEL FLOOR UNIT/FLOOR ASSEMBLY - LIGHTWEIGHT OR NORMAL WEIGHT CONCRETE FLOOR (MINIMUM 4-1/2" TO MAXIMUM 8" THICK) OVER METAL DECKING (UL CLASSIFIED D700, D800, OR D900 SERIES).
2. [OPTIONAL - NOT SHOWN] ANY OF THE FOLLOWING SLEEVES MAY BE USED :
 - A. NOMINAL 5" DIAMETER STEEL PIPE SLEEVE (SCHEDULE 10 OR HEAVIER) CAST OR GROUTED INTO FLOOR ASSEMBLY, FLUSH WITH FLOOR SURFACES.
 - B. NOMINAL 5" DIAMETER GALVANIZED STEEL SLEEVE (MIN. 26 GA.) WITH MINIMUM 2" LAP ALONG LONGITUDINAL SEAM. SLEEVE MAY EXTEND A MAXIMUM 4" BELOW BOTTOM SURFACE OF FLOOR AND SIT FLUSH WITH TOP SURFACE OF FLOOR.
3. HILTI CFS-DID 3" MD FIRESTOP DROP-IN DEVICE INSERTED INTO OPENING AND SECURED TO TOP OF FLOOR WITH THREE HILTI 1/4" (6mm) DIAMETER BY 1-1/4" (32mm) LONG KWIK-CON II+ CONCRETE SCREW ANCHORS, HILTI 1/4" (6mm) DIAMETER BY 1-3/4" (45mm) LONG KWIK BOLT 3 STEEL EXPANSION ANCHORS, OR HILTI 1/4" (6mm) BY 3/4" (19mm) LONG METAL HIT ANCHORS (INSTALLED IN A TRIANGULAR FASHION THROUGH HOLES PROVIDED). IN ADDITION, FOUR 11/16" (18mm) LONG HILTI X-GH P18 MX STEEL FASTENERS MAY BE INSTALLED THROUGH THE STEEL FLANGE, TWO ON EACH SIDE.
4. NOMINAL 2" DIAMETER PVC PLASTIC PIPE (CELLULAR OR SOLID CORE) (SCHEDULE 40) CEMENTED INTO BOTTOM OF SHOWER/FLOOR DRAIN.
5. PVC FITTING WITH CHROMED STEEL SHOWER OR FLOOR DRAIN STRAINER SIZED TO ACCOMMODATE DRAIN PIPE.

NOTE : MAXIMUM DIAMETER OF OPENING = 5".



HILTI, Inc.
Tulsa, Oklahoma USA (800) 879-8000

Sheet	1 of 1
Scale	9/64" = 1"
Date	May 12, 2014

Drawing No.

FA
2230a

Saving Lives through Innovation and Education