

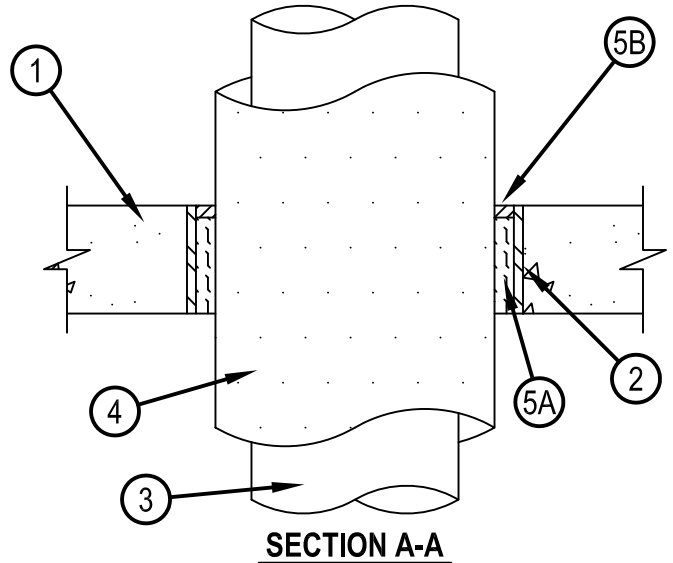
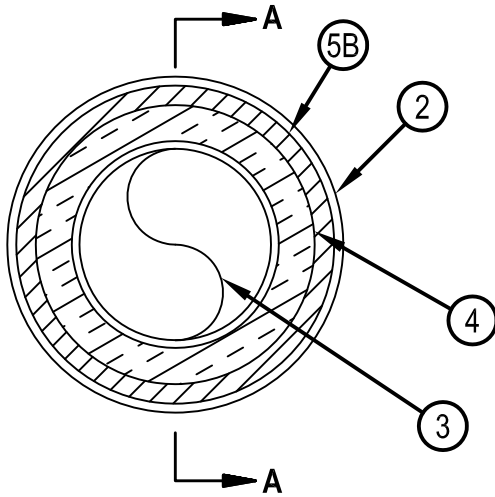


Classified by
Underwriters Laboratories, Inc.
to UL 1479 and CAN/ULC-S115

System No. F-A-5042

FA 5042

ANSI/UL1479 (ASTM E814)	CAN/ULC S115
F Rating — 2 Hr	F Rating — 2 Hr
T Rating — 3/4 Hr	FT Rating — 0 and 3/4 Hr (See Item 4)
W Rating — Class 1 (See Items 4A and 5B)	FH Rating — 2 Hr
	FTH Rating — 0 and 3/4 Hr (See Item 4)



1. Floor Assembly — Min 4-1/2 in. (114 mm) thick reinforced lightweight or normal weight (100-150 pcf or 1600-2400 kg/m³) concrete. Max diam of opening is 14-1/2 in. (368 mm).
2. Steel Sleeve — (Optional) - Nom 14 in. (356mm) diam (or smaller) Schedule 10 (or heavier) steel pipe sleeve cast or grouted flush with floor surfaces.
3. Through Penetrant — One metallic pipe or tubing to be installed within the opening. Pipe or tubing to be rigidly supported on both sides of floor assembly. The following types of pipe or tubing may be used.
 - A. Steel Pipe — Nom 8 in. (203 mm) diam (or smaller) Schedule 10 (or heavier) steel pipe.
 - B. Iron Pipe — Nom 8 in. (203 mm) diam (or smaller) cast or ductile iron pipe.
 - C. Copper Tubing — Nom 4 in. (102 mm) diam (or smaller) Type L (or heavier) copper tubing.
 - D. Copper Pipe — Nom 4 in. (102 mm) diam (or smaller) Regular (or heavier) copper pipe.
4. Pipe Covering* — Max 1-1/2 in. (38 mm) thick hollow cylindrical heavy density (min 3.5 pcf or 56 kg/m³) glass fiber units jacketed on the outside with an all service jacket. Longitudinal joints sealed with metal fasteners or factory-applied self-sealing lap tape. Transverse joints secured with metal fasteners or with butt tape supplied with the product. For copper pipe and tubes, the annular space between the pipe covering and the edge of the steel sleeve or opening shall be min 1/4 in. (6 mm) to max 2-5/8 in. (67 mm). For steel and iron pipe, the annular space between the pipe covering and the edge of the steel sleeve or opening shall be min 1/2 in. (13 mm) to max 2 in. (51 mm). The T, FT, FTH Rating for the firestop system is 0 hr when the pipe covering thickness is less than 1-1/2 in. (38 mm) thick.
See Pipe and Equipment Covering — Materials (BRGU) category in the Building Materials Directory for names of manufacturers. Any pipe covering material meeting the above specifications and bearing the UL Classification Marking with a Flame Spread Index of 25 or less and a Smoke Developed Index of 50 or less may be used.
- 4A. PVC Jacket+ — For W Rating, an additional PVC jacketing, supplied in sheet form, shall be tightly wrapped around the all service jacket on the pipe covering with the longitudinal seam continuously sealed using the adhesive supplied with the jacket. The jacket is to be nom 48 in. (1219 mm) wide by nom 20 or 30 mil (0.5 or 0.8 mm) thick. The jacket shall be installed at a point 36 in. (914 mm) to 40 in. (1016 mm) above the top surface of the floor assembly and shall extend downward into and/or through the opening.



Hilti Firestop Systems

Reproduced by HILTI, Inc. Courtesy of
Underwriters Laboratories, Inc.
July 24, 2014

System No. F-A-5042

FA 5042

5. Firestop System — The firestop system shall consist of the following:

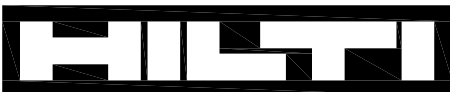
A. Packing Material — Min 4 in. (102 mm) thickness of min 4 pcf (64 kg/m³) mineral wool batt insulation firmly packed into opening as a permanent form. Packing material to be recessed from top surface of floor as required to accommodate the required thickness of fill material.

B. Fill, Void or Cavity Material*- Sealant — Min 1/2 in. (13 mm) thickness of fill material applied within the annulus, flush with the top surface of floor. When steel sleeve is used, sealant to overlap top edge of steel sleeve. For W Rating, when steel sleeve is used, sealant to overlap top edge of steel sleeve and extend a min of 1/2 in. (13 mm) past outer edge of steel sleeve.

HILTI CONSTRUCTION CHEMICALS, DIV OF HILTI INC — CP 604 Self Leveling Firestop Sealant, CFS-S SIL GG or CFS-S SIL SL Sealant.

*Bearing the UL Classification Mark

+Bearing the UL Recognized Component Marking



Hilti Firestop Systems

Reproduced by HILTI, Inc. Courtesy of
Underwriters Laboratories, Inc.

July 24, 2014

Page: 2 of 2