

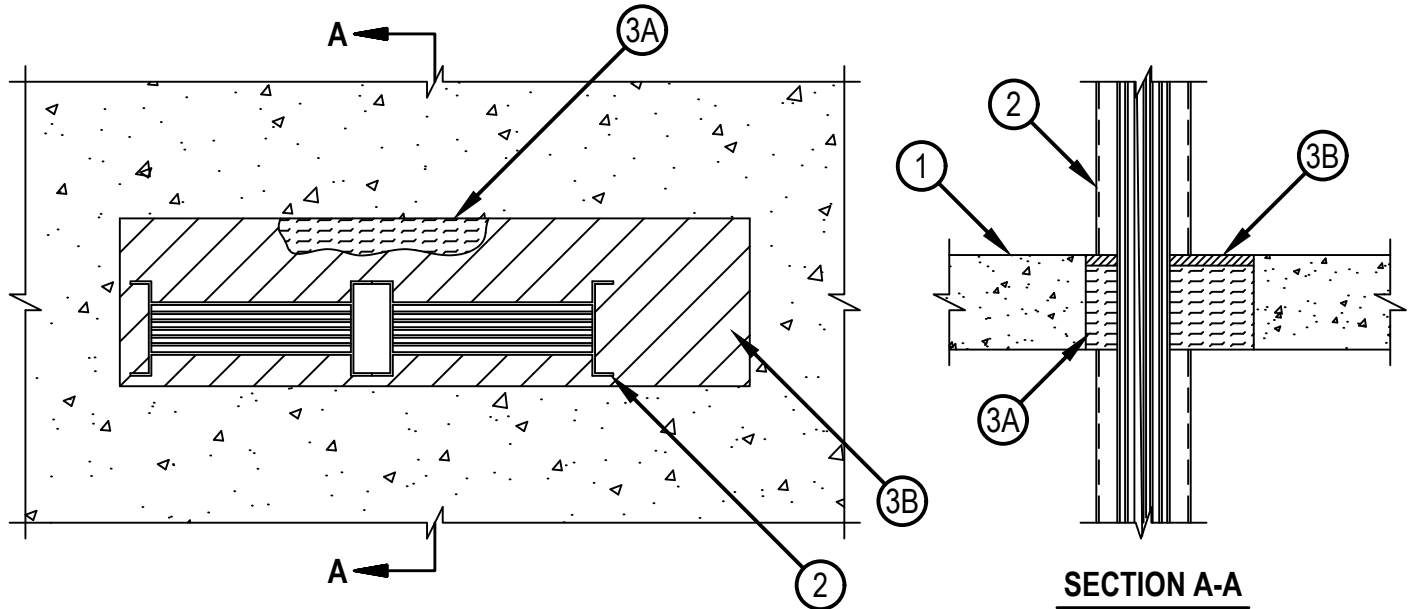


Classified by
Underwriters Laboratories, Inc.
to UL 1479 and CAN/ULC-S115

System No. F-A-6002

FA 6002

ANSI/UL1479 (ASTM E814)	CAN/ULC S115
F Rating — 2 Hr	F Rating — 2 Hr
T Rating — 0 Hr	FT Rating — 0 Hr
	FH Rating — 2 Hr
	FTH Rating — 0 Hr



1. Floor or Wall Assembly — Min 4-1/2 in. (114 mm) thick reinforced normal weight (100-150 pcf or 1600-2400 kg/m³) concrete. Max size of opening is 30 in. by 8 in. (762 mm by 203 mm).
2. Busway+ — Nom 23 in. (584 mm) wide (or smaller) by 4-1/2 in. (114 mm) deep (or smaller) "I" shaped aluminum enclosure containing factory mounted aluminum bars rated for 600 V, 4000 A or copper bars rated for 600 V, 5000 A. The busway shall bear the UL Listing Mark and shall be installed in accordance with the National Electrical Code, NFPA No. 70. The annular space between the busway and the periphery of the opening shall be min 1/2 in. (13 mm) to max 6-1/2 in. (165 mm).
3. Firestop System — The firestop system shall consist of the following:
 - A. Packing Material — Min 4 in. (102 mm) thickness of 4 pcf (64 kg/m³) mineral wool batt insulation tightly packed into the opening as a permanent form. Packing material to be recessed from top surface of floor to accommodate the required thickness of fill material.
 - B. Fill, Void or Cavity Material — Sealant — Min 1/2 in. (13 mm) thickness of fill material applied within the annulus flush with the top surface of the floor.
HILTI CONSTRUCTION CHEMICALS, DIV OF HILTI INC — CFS-S SIL GG or CFS-S SIL SL Sealant

* Indicates such products shall bear the UL or cUL Certification Mark for jurisdictions employing the UL or cUL Certification (such as Canada), respectively.

+ Bearing the UL Listing Mark



Reproduced by HILTI, Inc. Courtesy of
Underwriters Laboratories, Inc.
May 07, 2020