



All loading and design criteria supplied by customer is assumed accurate. Only the stated Design Assumptions were considered, and must be verified by the responsible Engineer of Record (EOR). The basis of Hilti component and connection design is the published data in the current Hilti Technical Guide, including material and cross-section properties, allowable load values, factors of safety, methods of calculation, and limiting factors. The EOR must verify suitability for any specific application, and the capacity of the supportive structure to receive the shown configuration and associated reaction loads. Modification to components and/or design may alter performance and must be evaluated by the EOR.

TYPICAL DETAIL TYPE:  
**CABLE TRAY SUPPORT**

TYPICAL DETAIL DESCRIPTION:  
**TRAPEZE - 2 TIER**

DESIGNED BY: KL  
REVIEWED BY: AJV

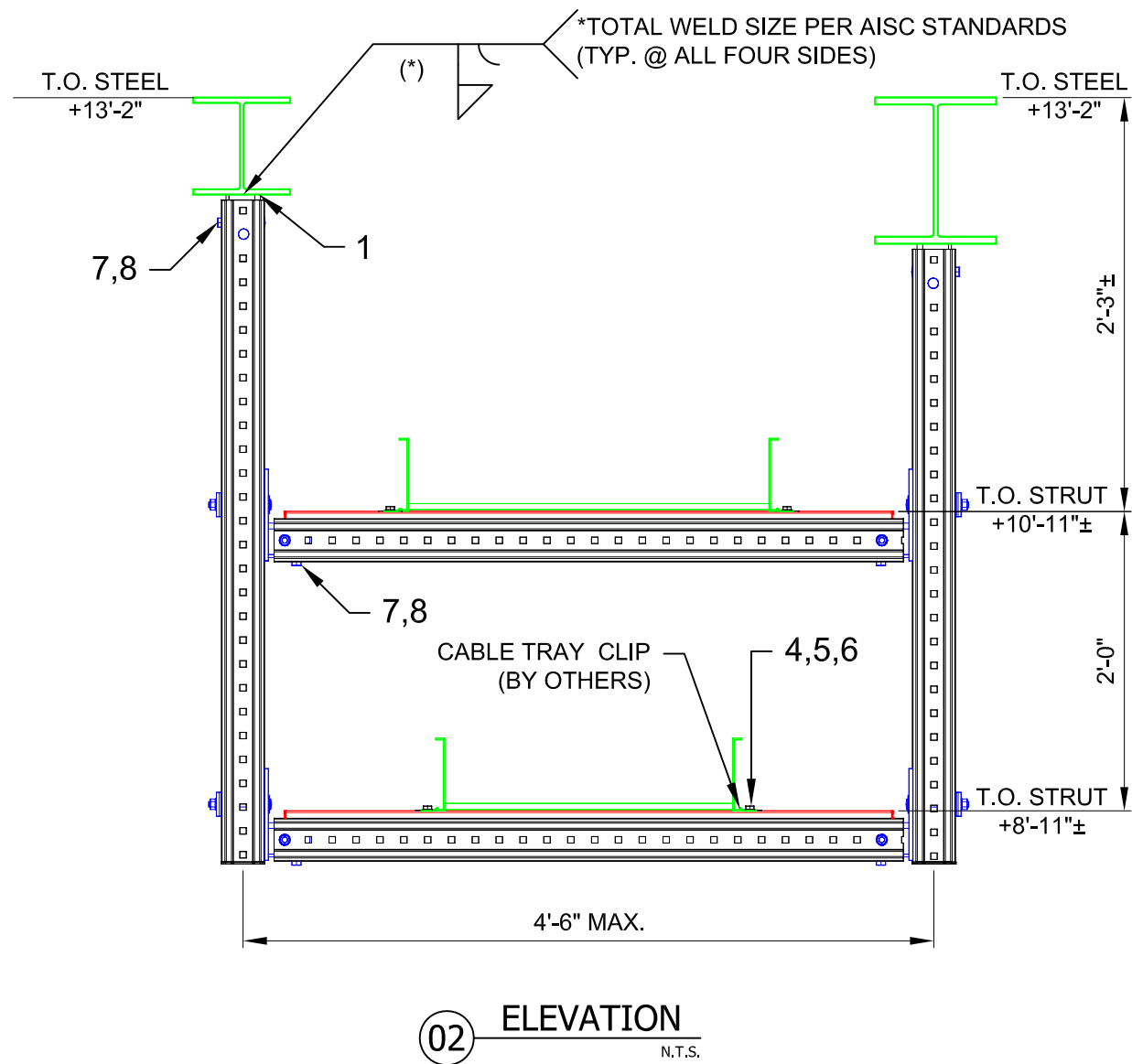
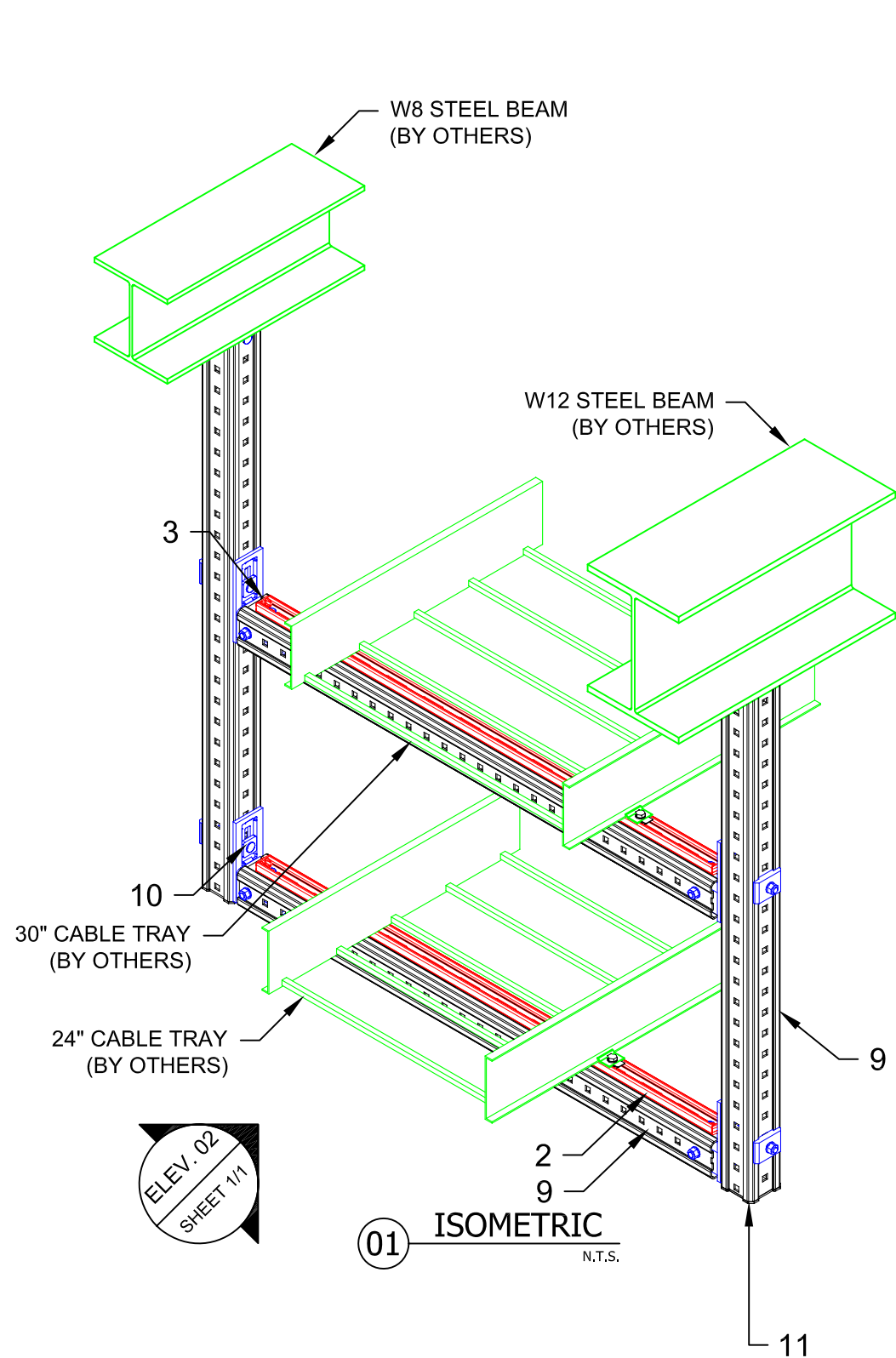
DRAWN BY: GAB  
ISSUE DATE: 02 JAN 15

REVISIONS:

NO.	DESCRIPTION:	DATE:
A	ORIGINAL ISSUE	02 JAN 15

TYPICAL DETAIL NOMENCLATURE:  
**CT-TR13-S**

DRAWING NUMBER: 01  
SHEET: 1/1



- NOTE(S):
- PRELIMINARY NOT FOR CONSTRUCTION
  - DESIGN ASSUMPTIONS:
    - DESIGN LOADS (STATIC, U.N.O.):  
DL: 60 lb/ft PER CABLE TRAY
    - LATERAL LOADS= 8.5 lb/ft (TRANSVERSELY & LONGITUDINAL)
    - CORROSION RESISTANCE REQD.: HDG
    - MAX. SUPPORT SPACING = 6'-0"
  - REFER TO COMPONENT MANUFACTURER'S IFUs FOR REQUIRED INSTALLATION INFO.
  - E.O.R. MUST BE NOTIFIED OF ANY DEVIATIONS FROM EXISTING/ NEW SUBSTRATE CONDITIONS SHOWN HEREIN TO VALIDATE ACCEPTANCE OF THIS HILTI DESIGN PRIOR TO INSTALLATION. ADEQUACY OF CABLE TRAY MAX. SPAN NOT VERIFIED BY HILTI.
  - UNIT WEIGHT OF FRAMING AS FOLLOWS:
    - STRUT MS-1316-12/HDG: 1.287 lb/ft.
    - MI-90: 6.3 lb/ft.

No.	Unit Qty	Unit	Description	Box Qty	# Boxes Needed	Item No.
1	2	EA	CONNECTOR MIC-SC90	2	1	304824
2	AS REQ'D	EA	STRUT MS-1316-12/HDG 9'-10" (3M)	1	AS REQ'D	407569
3	4	EA	CHANNEL END CAP MEK RED	50	1	244886
4	4	EA	HEX HEAD BOLT 3/8" x 3/4" HDG	VARIABLES	VARIABLES	SPECIAL
5	4	EA	WASHER 3/8" HDG	VARIABLES	VARIABLES	SPECIAL
6	4	EA	WING NUT MQM-F3/8"-F	25	1	304136
7	8	EA	ONEHAND SCREW MIA-OH90	10	1	304889
8	8	EA	MI HEX NUT M12-F-SL-WS 3/4"	100	1	382897
9	AS REQ'D	EA	GIRDER MI-90 3M	1	AS REQ'D	304798
10	4	EA	CONNECTOR MIC-90-U	4	1	304803
11	2	EA	GIRDER END CAP MIA-EC90	25	1	432077