

All loading and design criteria supplied by customer is assumed accurate. Only the stated Design Assumptions were considered, and must be verified by the responsible Engineer of Record (EOR). The basis of Hilti component and connection design is the published data in the current Hilti Technical Guide, including material and cross-section properties, allowable load values, factors of safety, methods of calculation, and limiting factors. The EOR must verify suitability for any specific application, and the capacity of the supportive structure to receive the shown configuration and associated reaction loads. Modification to components and/or design may alter performance and must be evaluated by the EOR.

TYPICAL DETAIL TYPE:

**PIPE SUPPORT**

TYPICAL DETAIL DESCRIPTION:

**GOALPOST - SINGLE**

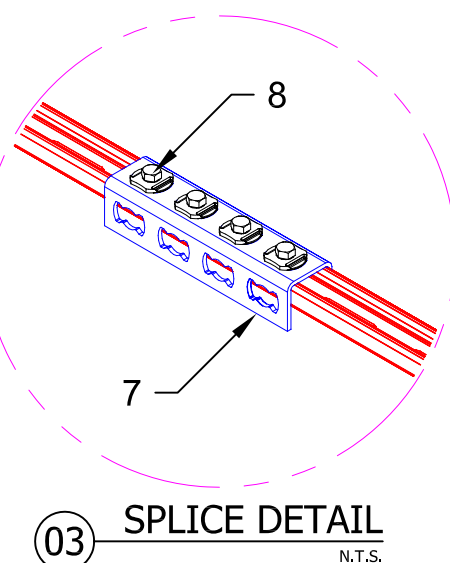
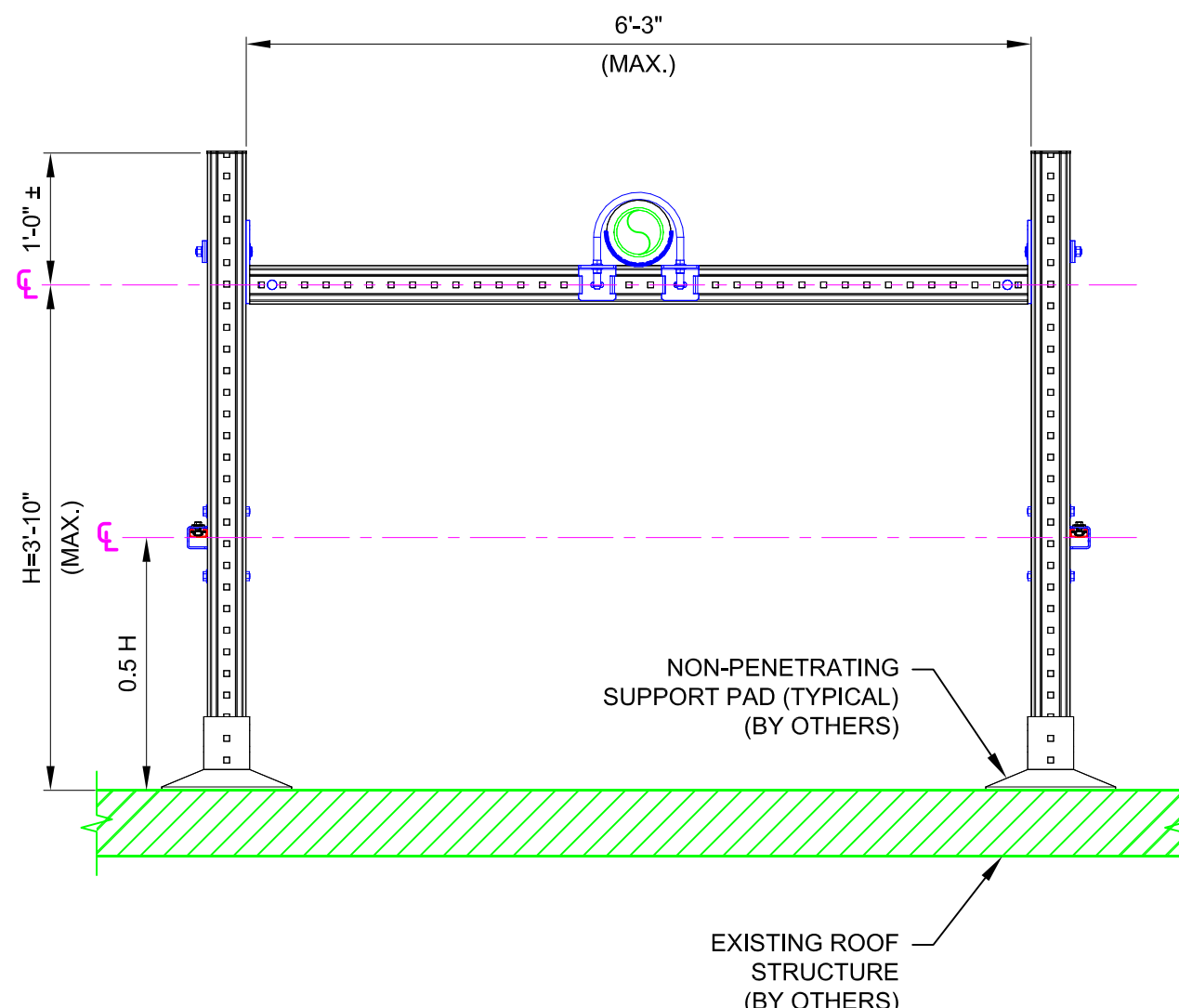
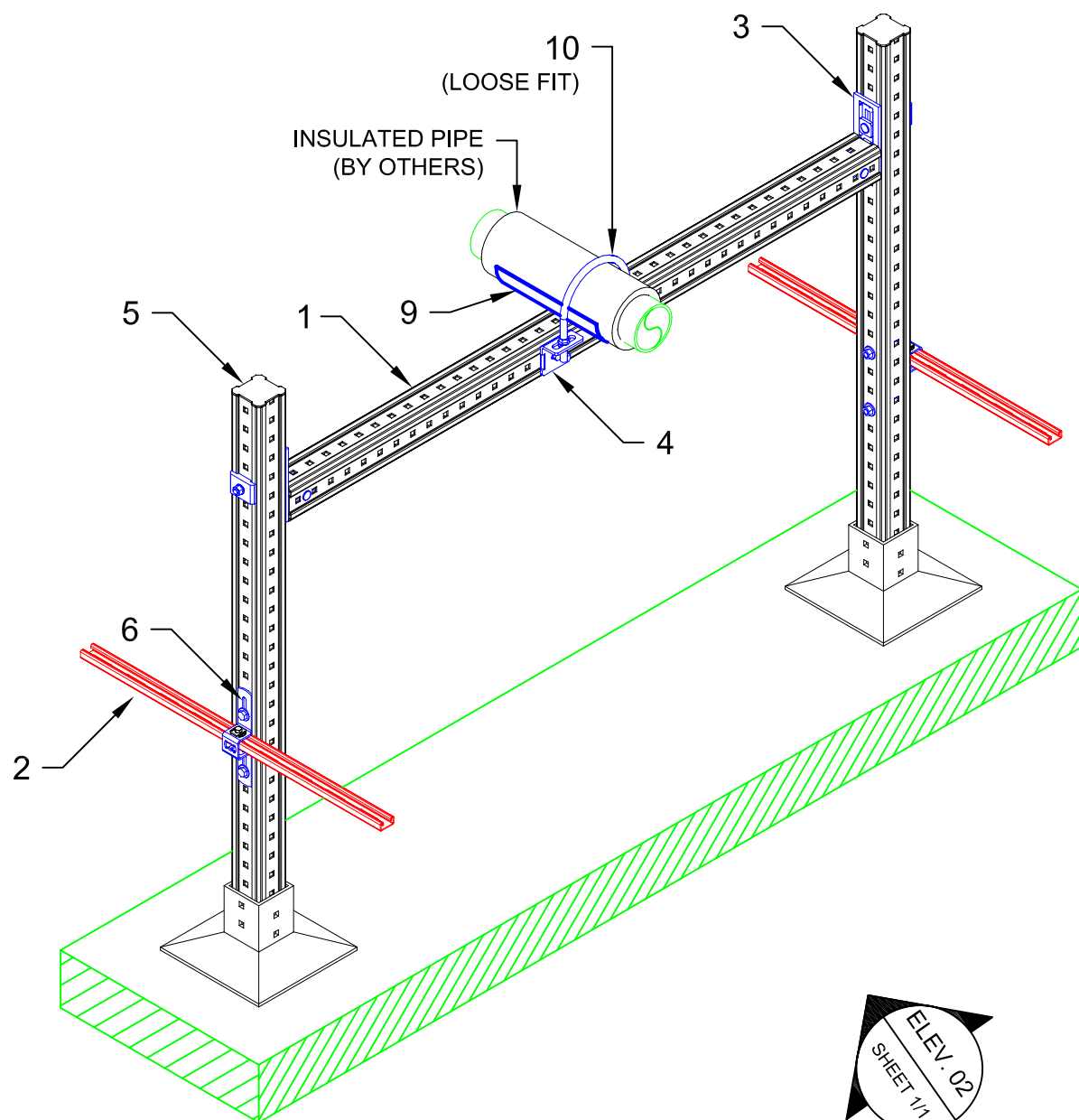
DESIGNED BY: KL	REVIEWED BY: AJV
DRAWN BY: HAM	ISSUE DATE: 09 DEC 14

REVISIONS:

NO.	DESCRIPTION:	DATE:
A	ORIGINAL ISSUE	09 DEC 14

TYPICAL DETAIL NOMENCLATURE:  
**P-GP11-N/A**

DRAWING NUMBER: <b>01</b>	SHEET: <b>1/1</b>
------------------------------	----------------------



**01 ISOMETRIC**  
N.T.S.

**02 ELEVATION**  
N.T.S.

**03 SPLICE DETAIL**  
N.T.S.

**NOTE(S):**

- PRELIMINARY NOT FOR CONSTRUCTION
- DESIGN ASSUMPTIONS:
  - DESIGN LOADS (STATIC, U.N.O.):  
DL: 1070 LBS
  - LATERAL LOADS NOT CONSIDERED**
  - CORROSION RESISTANCE REQD.: HDG
- ALL LOADS ASSUMED TO ACT AT CENTER OF PIPE(S), U.N.O.
- REFER TO COMPONENT MANUFACTURER'S IFUs FOR REQUIRED INSTALLATION INFO.
- E.O.R. MUST BE NOTIFIED OF ANY DEVIATIONS FROM EXISTING SUBSTRATE CONDITIONS SHOWN HEREIN TO VALIDATE ACCEPTANCE OF THIS HILTI DESIGN PRIOR TO INSTALLATION.
- ADEQUACY/COMPATIBILITY OF NON-PENETRATING SUPPORT PAD WITH MI SYSTEM NOT VERIFIED BY HILTI.
- E.O.R. SHALL VERIFY OVERALL MI SUPPORT SYSTEM STABILITY.

**SDC INSULATION SHIELDS**

DESCRIPTION	ITEM NO.
INSULATION SHILED 2"	424197
INSULATION SHILED 2-1/2"	424198
INSULATION SHILED 3"	424199
INSULATION SHILED 4"	424200
INSULATION SHILED 5"	424202
INSULATION SHILED 6"	424203
INSULATION SHILED 8"	424204
INSULATION SHILED 10"	424205

No.	Unit Qty	Unit	Description	Box Qty	# Boxes Needed	Item No.
1	AS REQ'D	EA	GIRDER MI-90 3M	1	AS REQ'D	304798
2	AS REQ'D	EA	STRUT MS-1316-12/HDG 9'-10" (3M)	1	AS REQ'D	407569
3	2	EA	CONNECTOR MIC-90-U	4	1	304803
4	1	PR	CONNECTOR U-BOLT MIC-UB90-M16	6	1	304834
5	2	EA	GIRDER END CAP MIA-EC90	25	1	432077
6	2	EA	CONNECTOR MIC-MI/MQ-X	16	1	304881
7	AS REQ'D	EA	CHANNEL TIE MQV-12-F	10	AS REQ'D	304155
8	AS REQ'D	EA	CHANNEL CONNECTOR MQN-HDG PLUS	50	AS REQ'D	387779
9	1	EA	SDC INSULATION SHIELD (SEE TABLE)	VARIABLES	VARIABLES	VARIABLES
10	1	EA	U-BOLT	VARIABLES	VARIABLES	SPECIAL

