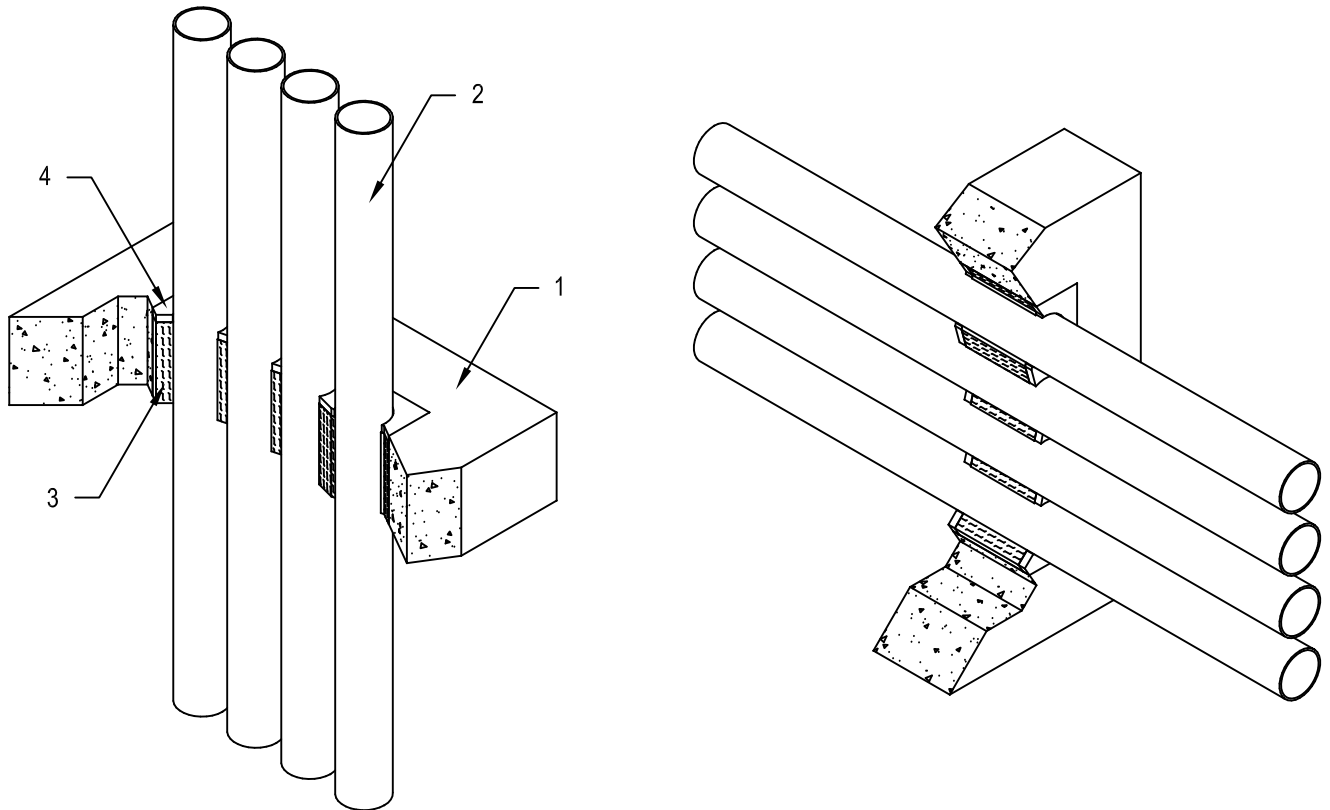


Hilti Corporation
Design Number HI/PF 120-05
Through Penetration
FS-ONE MAX Intumescent Firestop Sealant
ASTM E 814 (2011) & UL 1479 (2010)
F Rating: 2 Hours
T Rating: 2 Hours
H Rating: 2 Hours
CAN/ULC S115 (2005) at 2.5Pa
FTH: 2 Hours

HI/PF 120-05



1. **FLOOR/CEILING OR WALL ASSEMBLY:** Use a two-hour fire-rated floor/ceiling or wall assembly consisting of min. 6 in. (152 mm) thick normal weight (100-150 pcf (1600-2400 kg/m³)) reinforced concrete or 6 in. (152 mm) thick hollow or concrete filled Concrete Masonry Units (CMU). Create a through-opening with a max. area of 90 square inches (581 square cm) with a max. dimension of 18 in. (457 mm) or max. diameter of 6 in. (152 mm).
2. **PENETRATING ITEM:** Install one or more 4/C (aluminum conductor) 500 kcmil PVC jacketed metal clad power cables. Install penetrating item centered or offset in the through-opening created in floor/ceiling or wall assembly (Item 1). Offset may be 0 in. (0 mm) to 4 in. (102 mm) between cables and periphery of opening and 1 in. (25 mm) to 1-1/2 in. (38 mm) between cables.
3. **PACKING MATERIAL:** Install min. 4 pcf (64 kg/m³) density mineral wool batt insulation in the annular space, compressed 25% around the penetrating item (Item 2) as follows:
 - Floor Ceiling Assembly-Install nominal 5-1/2 in. (140 mm) layer recessed 1/2 in. (13 mm) from the top of the floor/ceiling assembly (Item 1)
 - Wall Assembly: Install nominal 5 in. (127 mm) layer recessed 1/2 in. (13 mm) from both surfaces of the wall assembly (Item 1).
4. **CERTIFIED COMPANY:** Hilti Corporation
CERTIFIED PRODUCT: Sealant
MODEL: FS-ONE MAX Intumescent Firestop Sealant
Apply nominal 1/2 in. (13 mm) layer of FS-ONE MAX Intumescent Firestop Sealant to fill the 1/2 in. (6 mm) void(s) left after installing the packing material (Item 3).



Hilti Firestop Systems

Reproduced by HILTI, Inc.
 Courtesy of Intertek Group
 December 16, 2014

