



All loading and design criteria supplied by customer is assumed accurate. Only the stated Design Assumptions were considered, and must be verified by the responsible Engineer of Record (EOR). The basis of Hilti component and connection design is the published data in the current Hilti Technical Guide, including material and cross-section properties, allowable load values, factors of safety, methods of calculation, and limiting factors. The EOR must verify suitability for any specific application, and the capacity of the supportive structure to receive the shown configuration and associated reaction loads. Modification to components and/or design may alter performance and must be evaluated by the EOR.

TYPICAL DETAIL TYPE:
OVERHEAD GRID

TYPICAL DETAIL DESCRIPTION:
COMMERCIAL SUPPORT

DESIGNED BY: MES
REVIEWED BY:

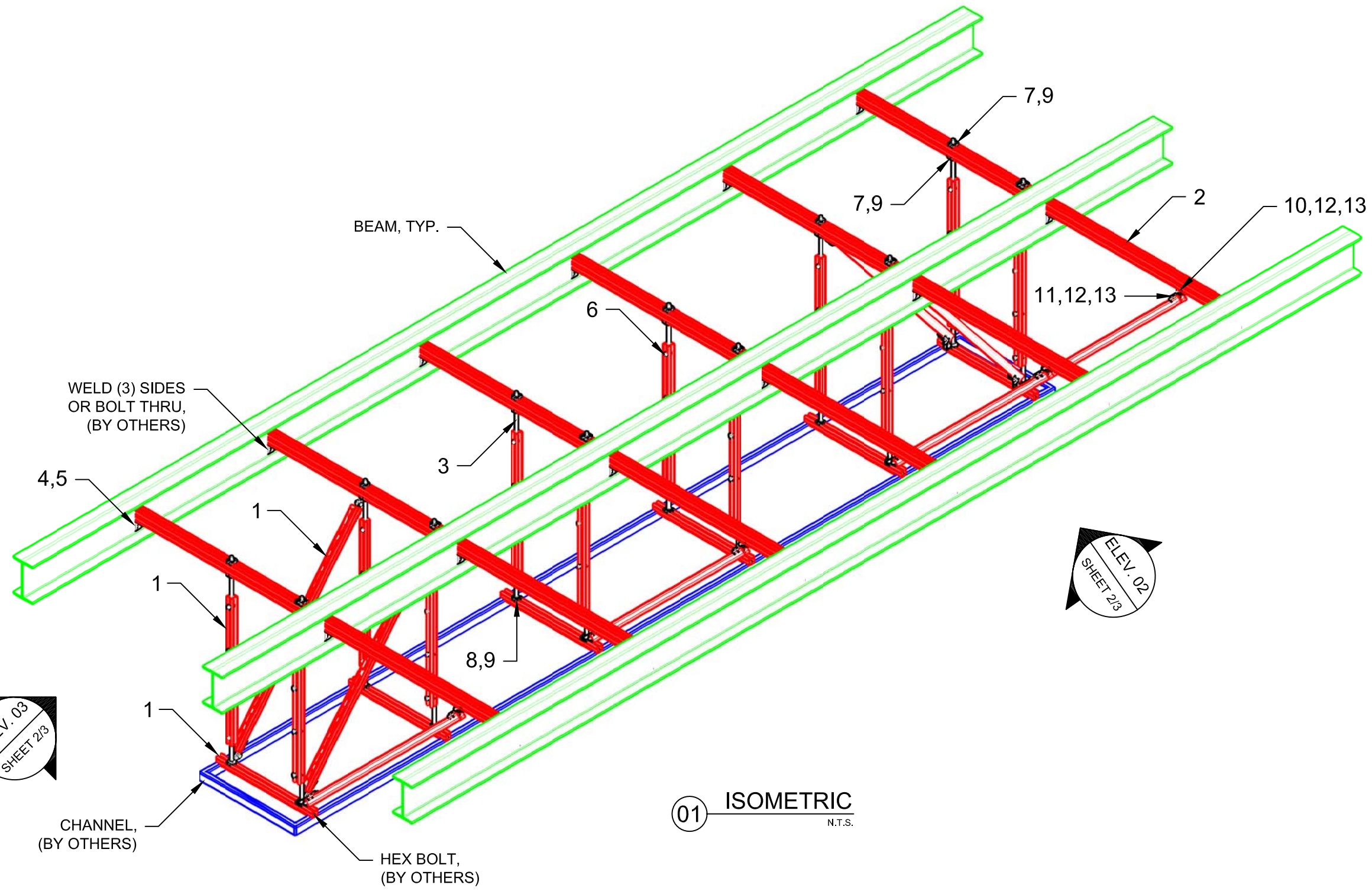
DRAWN BY: MJR
ISSUE DATE: 25 FEB 15

REVISIONS:

NO:	DESCRIPTION:	DATE:
A	ORIGINAL ISSUE	25 FEB 15

TYPICAL DETAIL NOMENCLATURE:
OHG-COMM51-S

DRAWING NUMBER: 01
SHEET: 1/3



01 ISOMETRIC
N.T.S.

No.	Unit Qty	Unit	Description	Box Qty	# Boxes Needed	Item No.
1	AS REQ'D	EA	STRUT HS-158-12/PG 20'	1	AS REQ'D	407557
2	AS REQ'D	EA	STRUT HS-158-12/PG 20' B2B	1	AS REQ'D	2007083
3	AS REQ'D	EA	THREADED ROD 1/2"-6' ZINC	12	AS REQ'D	257965
4	24	EA	RAIL SUPPORT MQP-1/1	20	2	369646
5	24	EA	CHANNEL CONNECTOR MQN	50	1	369623
6	48	EA	VERTICAL ROD STIFFENER 25/BOX	25	1	311943
7	24	EA	BASE PLATE MQZ-L1/2"	20	2	370633
8	12	EA	SADDLE NUT MQA-F1/2"	50	1	377886
9	36	EA	HEX NUT-HEAVY DUTY 1/2"	100	1	411753
10	16	EA	SEISMIC HINGE, BASE/HANGER HALF, 1/2"	10	2	333308
11	16	EA	SEISMIC HINGE, STRUT HALF (10/BOX)	10	2	333309
12	36	EA	HEX HEAD BOLT 1/2" x 1-1/4"	50	1	411767
13	36	EA	WING NUT MQM-F1/2"	50	1	377883

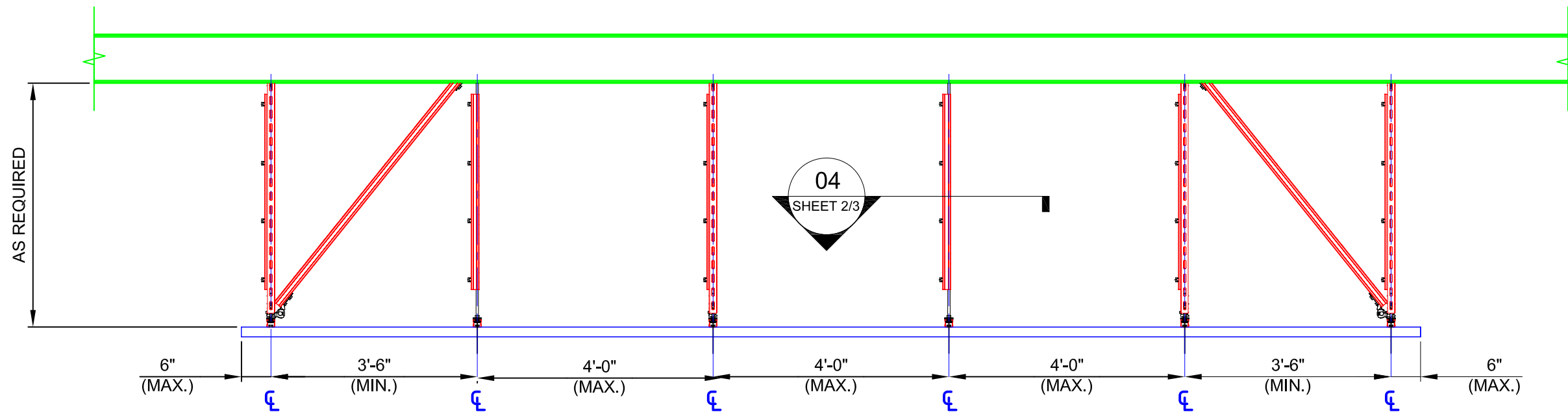
NOTE(S):
1. PRELIMINARY, NOT FOR CONSTRUCTION
2. DESIGN ASSUMPTIONS:
a. NO LOADS CONSIDERED - CONCEPT ONLY
b. LATERAL LOADS NOT CONSIDERED
c. BUILDING CODE: NOT SPECIFIED
d. CORROSION RESISTANCE REQ'D.: NOT SPECIFIED
3. REFER TO COMPONENT MANUFACTURER'S IFUs FOR REQUIRED INSTALLATION INFO.
4. E.O.R. MUST BE NOTIFIED OF ANY DEVIATIONS FROM EXISTING/ NEW SUBSTRATE CONDITIONS SHOWN HEREIN TO VALIDATE ACCEPTANCE OF THIS HILTI DESIGN PRIOR TO INSTALLATION.

ELEV. 03
SHEET 2/3

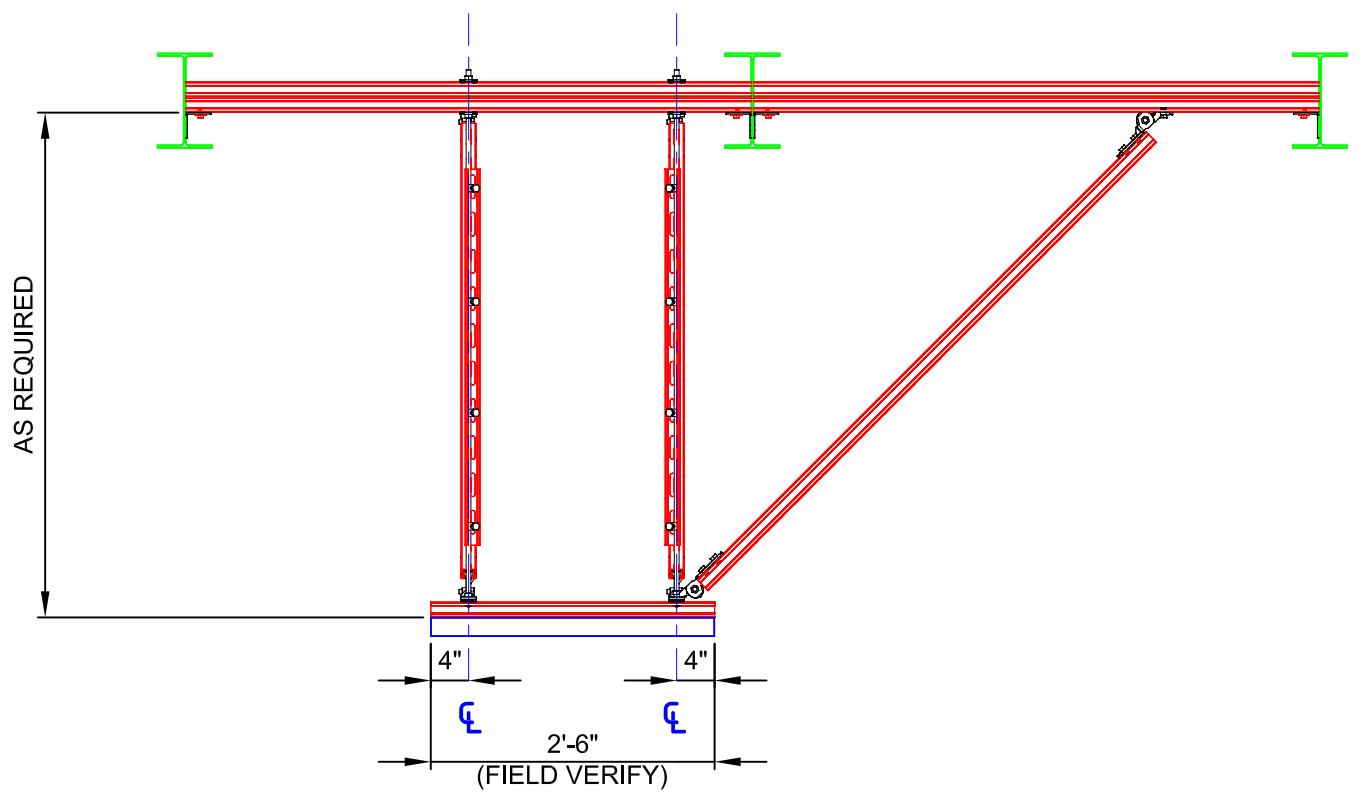
ELEV. 02
SHEET 2/3



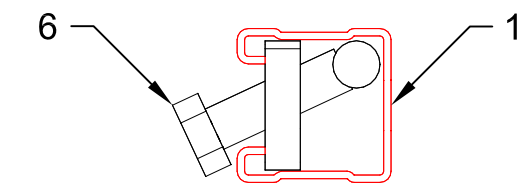
All loading and design criteria supplied by customer is assumed accurate. Only the stated Design Assumptions were considered, and must be verified by the responsible Engineer of Record (EOR). The basis of Hilti component and connection design is the published data in the current Hilti Technical Guide, including material and cross-section properties, allowable load values, factors of safety, methods of calculation, and limiting factors. The EOR must verify suitability for any specific application, and the capacity of the supportive structure to receive the shown configuration and associated reaction loads. Modification to components and/or design may alter performance and must be evaluated by the EOR.



02 ELEVATION
N.T.S.



03 ELEVATION
N.T.S.



04 SECTION
N.T.S.

TYPICAL DETAIL TYPE:

OVERHEAD GRID

TYPICAL DETAIL DESCRIPTION:

COMMERCIAL SUPPORT

DESIGNED BY: MES	REVIEWED BY:
DRAWN BY: MJR	ISSUE DATE: 25 FEB 15

REVISIONS:

NO.	DESCRIPTION:	DATE:
A	ORIGINAL ISSUE	25 FEB 15

TYPICAL DETAIL NOMENCLATURE:
OHG-COMM51-S

DRAWING NUMBER: 01	SHEET: 2/3
-----------------------	---------------



All loading and design criteria supplied by customer is assumed accurate. Only the stated Design Assumptions were considered, and must be verified by the responsible Engineer of Record (EOR). The basis of Hilti component and connection design is the published data in the current Hilti Technical Guide, including material and cross-section properties, allowable load values, factors of safety, methods of calculation, and limiting factors. The EOR must verify suitability for any specific application, and the capacity of the supportive structure to receive the shown configuration and associated reaction loads. Modification to components and/or design may alter performance and must be evaluated by the EOR.

TYPICAL DETAIL TYPE:
OVERHEAD GRID

TYPICAL DETAIL DESCRIPTION:
COMMERCIAL SUPPORT

DESIGNED BY: MES	REVIEWED BY:
---------------------	--------------

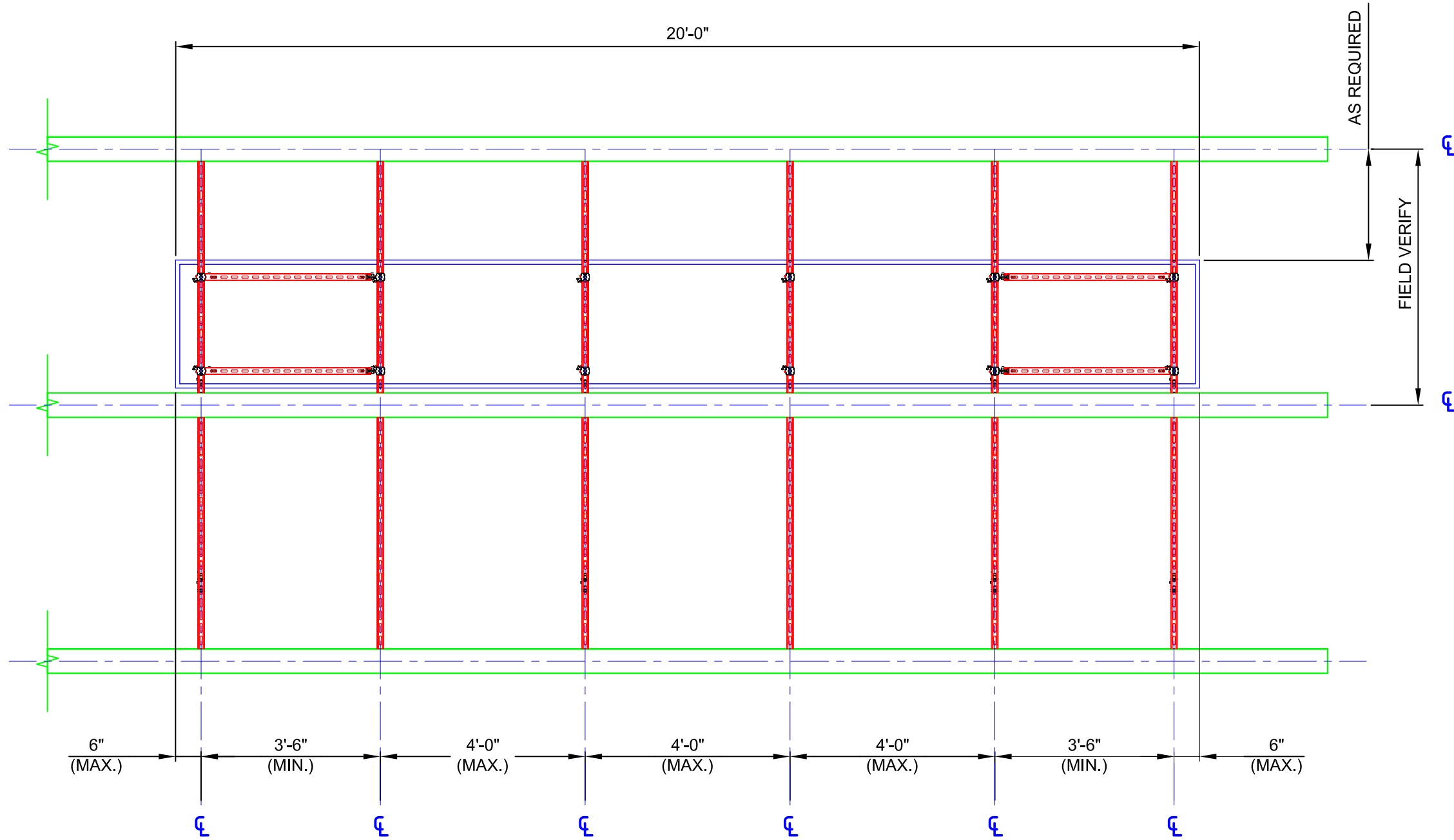
DRAWN BY: MJR	ISSUE DATE: 25 FEB 15
------------------	--------------------------

REVISIONS:

NO.	DESCRIPTION:	DATE:
A	ORIGINAL ISSUE	25 FEB 15

TYPICAL DETAIL NOMENCLATURE:
OHG-COMM51-S

DRAWING NUMBER: 01	SHEET: 3/3
------------------------------	----------------------



05 PLAN VIEW
N.T.S.