



All loading and design criteria supplied by customer is assumed accurate. Only the stated Design Assumptions were considered, and must be verified by the responsible Engineer of Record (EOR). The basis of Hilti component and connection design is the published data in the current Hilti Technical Guide, including material and cross-section properties, allowable load values, factors of safety, methods of calculation, and limiting factors. The EOR must verify suitability for any specific application, and the capacity of the supportive structure to receive the shown configuration and associated reaction loads. Modification to components and/or design may alter performance and must be evaluated by the EOR.

PROJECT NAME:

TYPICAL DETAILS

SERVICE REQUEST DESCRIPTION:

CABLE TRAY BRACED CANTILEVER STEEL

DESIGNED BY: AJV	REVIEWED BY: ISE
DRAWN BY: GAB	ISSUE DATE: 22 DEC 14

REVISIONS:

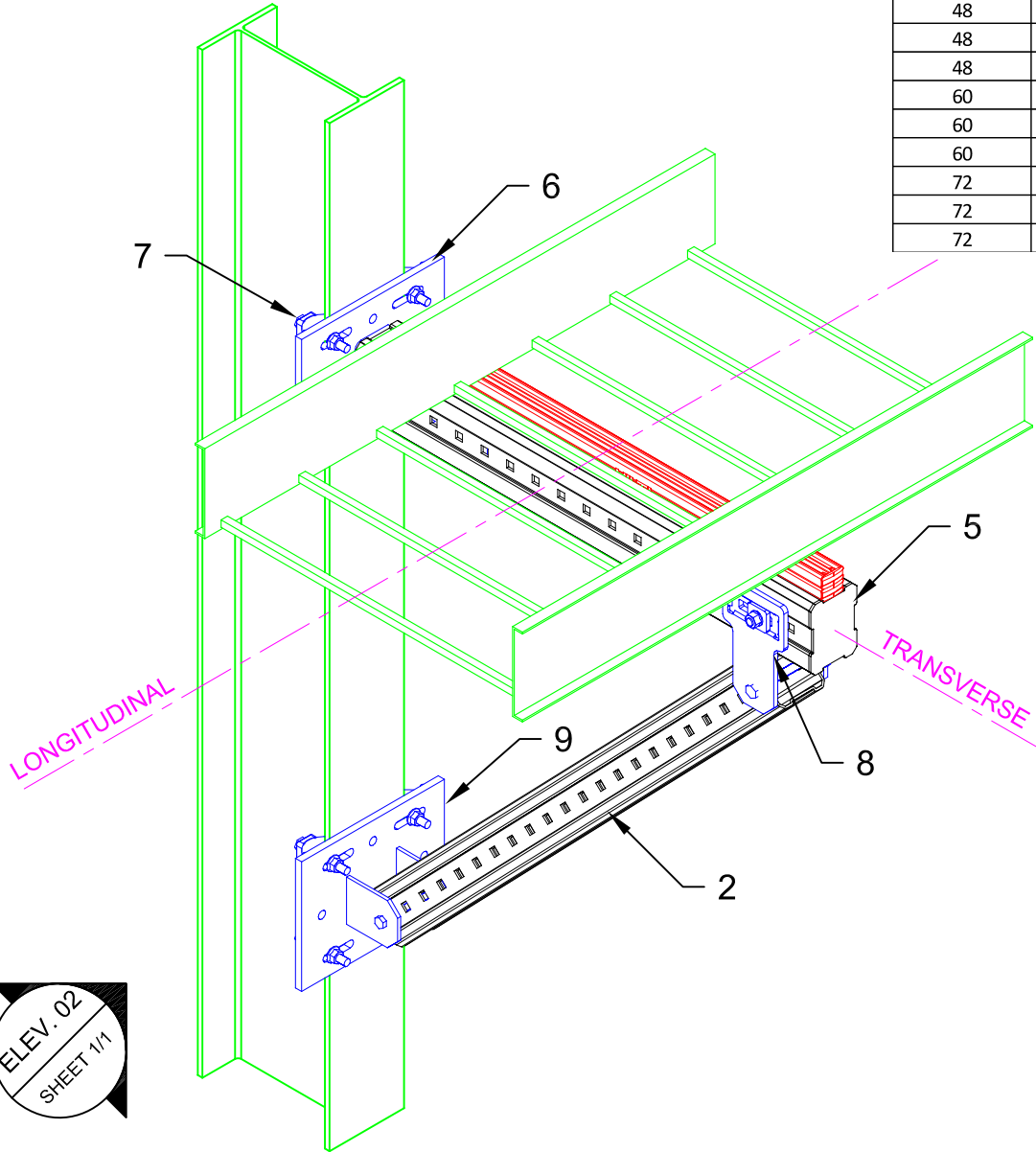
NO.	DESCRIPTION:	DATE:
A	ORIGINAL ISSUE	22 DEC 14

SERVICE REQUEST NUMBER:

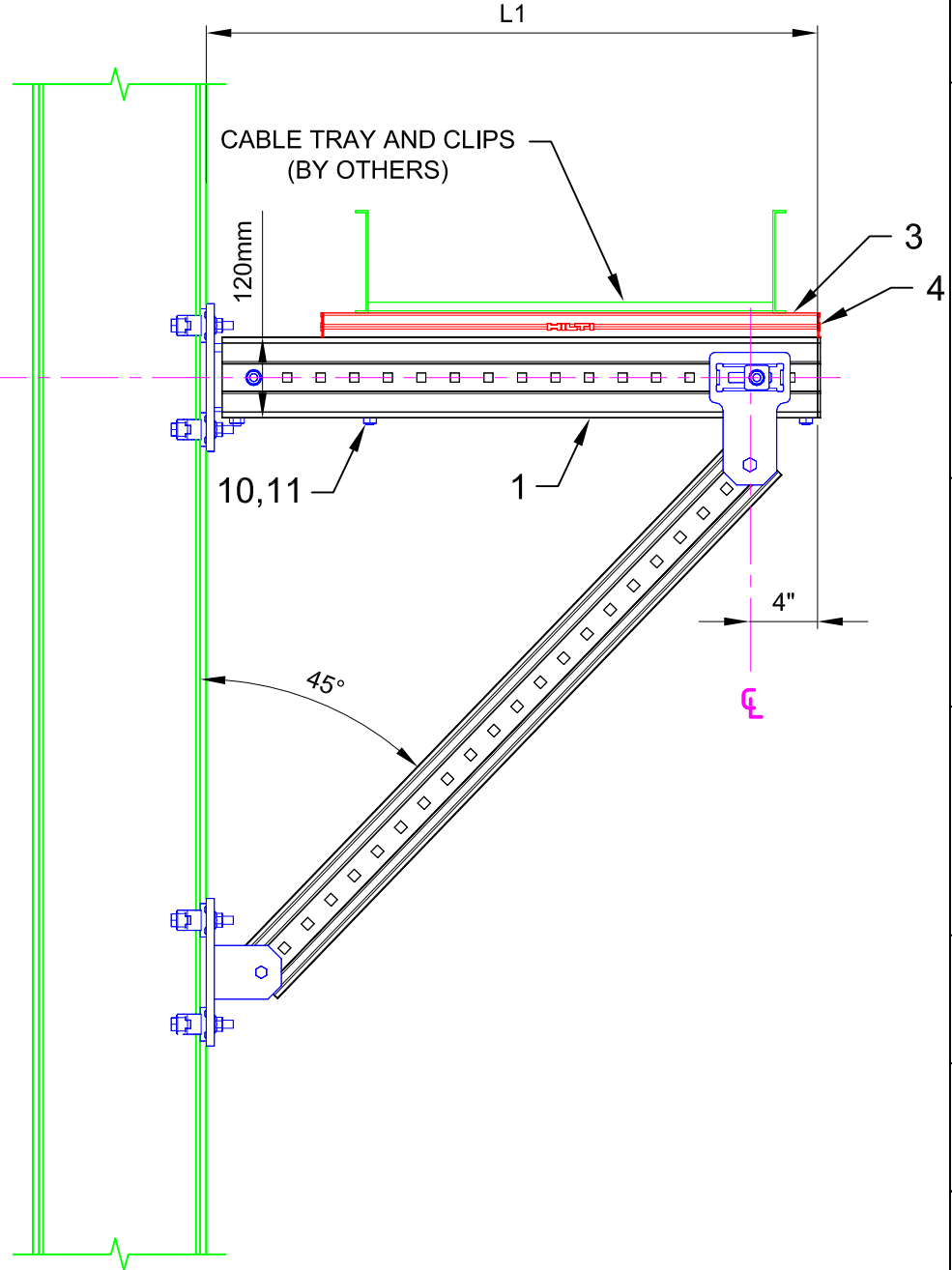
TD-CT-BC02-S

DRAWING NUMBER: 01	SHEET: 1/1
-----------------------	---------------

Maximum "L1" (in)	Allowable Vertical Load (lbs)	Allowable Transverse Load (lbs)	Allowable Longitudinal Load (lbs)
48	1500	0	0
48	1500	450	0
48	666	0	200
60	1428	0	0
60	1428	428	0
60	540	0	162
72	1392	0	0
72	1392	417	0
72	458	0	137



01 ISOMETRIC N.T.S.



02 ELEVATION N.T.S.

MIC-S120-X

Beam Width Table

X	'B' Width	Item No.
A	2.9 to 6.5	304818
B	6.5 to 9.2	304819
C	9.2 to 11.8	304820

MIC-SX-MA

Beam Width Table

X	'B' Width	Item No.
A	2.9 to 6.5	304815
B	6.5 to 9.2	304816
C	9.2 to 11.8	304817

No.	Unit Qty	Unit	Description	Box Qty	# Boxes Needed	Item No.
1	AS REQ'D	EA	GIRDER MI-120 3M	1	AS REQ'D	304800
2	AS REQ'D	EA	GIRDER MI-90 3M	1	AS REQ'D	304798
3	AS REQ'D	EA	STRUT HS-158-12/HDG 10'	1	AS REQ'D	407570
4	4	EA	CHANNEL END CAP MEK RED	50	1	244886
5	1	EA	GIRDER END CAP MIA-EC120	25	1	432078
6	1	EA	CONNECTOR MIC-S120-X STEEL (SEE TABLE)	2	1	VARIES
7	8	EA	BEAM CLAMP MI-SGC-M12	16	1	233859
8	1	EA	CONNECTOR MIC-U-MA	2	1	304806
9	1	EA	CONNECTOR MIC-SX-MA STEEL (SEE TABLE)	2	1	VARIES
10	2	EA	ONEHAND SCREW MIA-OH120	10	1	304890
11	2	EA	PREVAIL TORQUE HEX NUT M12-F-SL-WS 3/4"	100	1	382897

- NOTE(S):
- ALLOWABLE LOADS CONSIDER APPROPRIATE LOAD FACTORS AND LOAD COMBINATIONS PER APPLICABLE CODES AND STANDARDS.
 - ALL LOADS ASSUMED TO ACT AT HORIZONTAL ζ OF CABLE TRAY WHICH IS SITTING DIRECTLY ON TOP OF MI GIRDER, U.N.O.
 - VERTICAL LOAD APPLIED WITH ONE HORIZONTAL LOAD AT A TIME.
 - CABLE TRAY HORIZONTAL OFFSET FROM MI POST $\zeta = 0"$

ELEV. 02
SHEET 1/1