



All loading and design criteria supplied by customer is assumed accurate. Only the stated Design Assumptions were considered, and must be verified by the responsible Engineer of Record (EOR). The basis of Hilti component and connection design is the published data in the current Hilti Technical Guide, including material and cross-section properties, allowable load values, factors of safety, methods of calculation, and limiting factors. The EOR must verify suitability for any specific application, and the capacity of the supportive structure to receive the shown configuration and associated reaction loads. Modification to components and/or design may alter performance and must be evaluated by the EOR.

PROJECT NAME:  
**TYPICAL DETAILS**

SERVICE REQUEST DESCRIPTION:  
**CABLE TRAYS  
F-FRAME  
STEEL**

DESIGNED BY:  
AJV

REVIEWED BY:  
ISE

DRAWN BY:  
GAB

ISSUE DATE:  
22 DEC 14

REVISIONS:

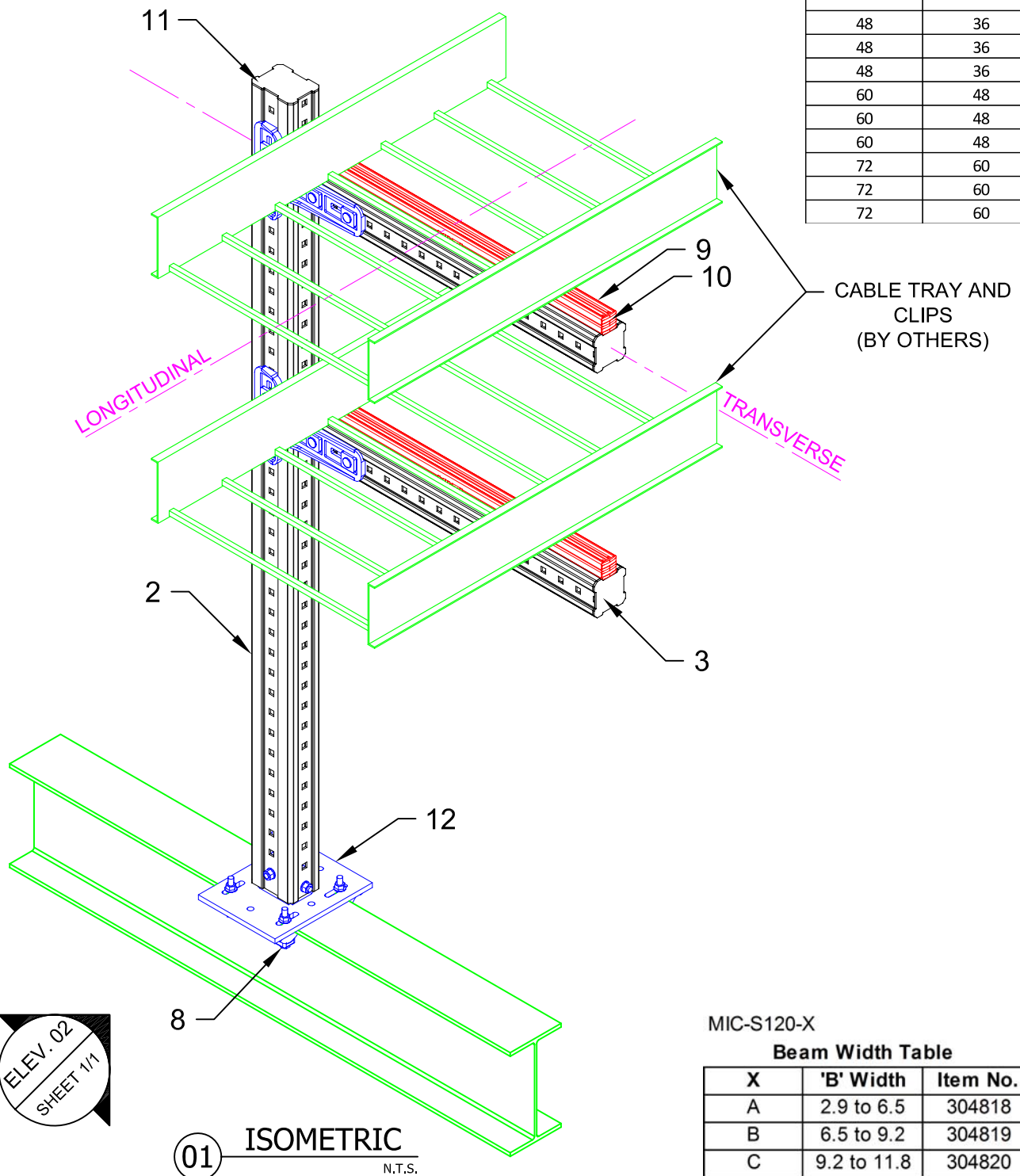
NO.	DESCRIPTION:	DATE:
A	ORIGINAL ISSUE	22 DEC 14

SERVICE REQUEST NUMBER:  
**TD-CT-F06-S**

DRAWING NUMBER:  
**01**

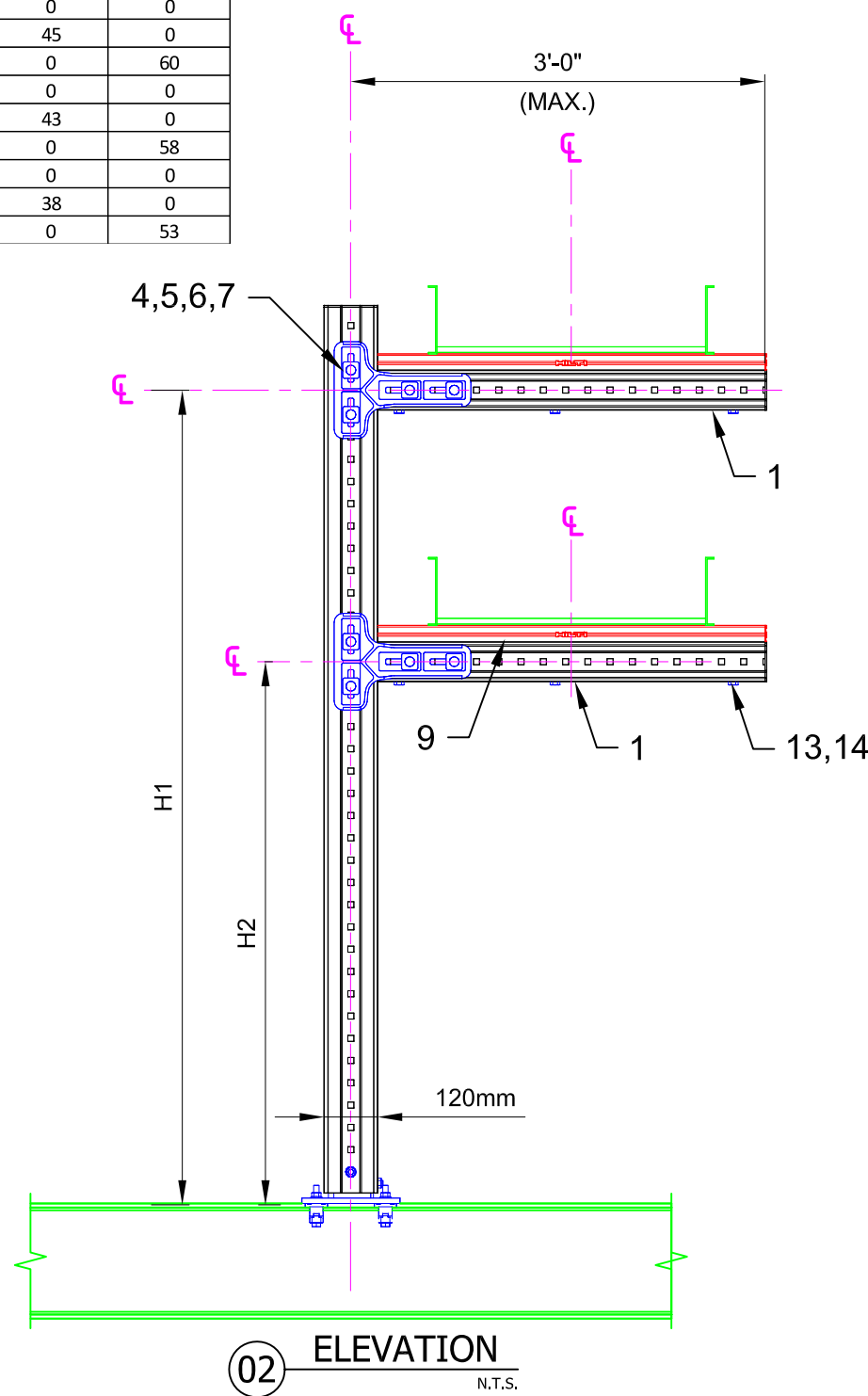
SHEET:  
**1/1**

Maximum "H1" (in)	Maximum "H2" (in)	Allowable Vertical Load (lbs)	Allowable Transverse Load (lbs)	Allowable Longitudinal Load (lbs)
48	36	207	0	0
48	36	150	45	0
48	36	200	0	60
60	48	207	0	0
60	48	141	43	0
60	48	191	0	58
72	60	207	0	0
72	60	125	38	0
72	60	175	0	53



MIC-S120-X  
**Beam Width Table**

X	'B' Width	Item No.
A	2.9 to 6.5	304818
B	6.5 to 9.2	304819
C	9.2 to 11.8	304820



- NOTE(S):**
- REFER TO TABLE FOR DIMENSIONAL LIMITATIONS BASED ON CABLE TRAY WIDTH.
  - ALLOWABLE LOADS CONSIDER APPROPRIATE LOAD FACTORS AND LOAD COMBINATIONS PER APPLICABLE CODES AND STANDARDS.
  - ALL LOADS ASSUMED TO ACT AT HORIZONTAL  $\epsilon$  OF CABLE TRAY(S) WHICH ARE SITTING DIRECTLY ON TOP OF MI GIRDER, U.N.O.
  - VERTICAL LOAD APPLIED WITH ONE HORIZONTAL LOAD AT A TIME.
  - LOADS IN TABLE ABOVE ARE PER HORIZONTAL ARM.

No.	Unit Qty	Unit	Description	Box Qty	# Boxes Needed	Item No.
1	AS REQ'D	EA	GIRDER MI-90 3M	1	AS REQ'D	304798
2	1	EA	GIRDER MI-120 3M	1	1	304800
3	2	EA	GIRDER END CAP MIA-EC90	25	1	432077
4	2	EA	CONNECTOR MIC-90-LH	3	1	2048107
5	8	EA	EASYHAND SCREW MIA-EH90	10	1	304887
6	8	EA	TOOTHED PLATE MIA-TP	20	1	305707
7	8	EA	MI HEX NUT M12-F-SL-WS 3/4"	100	1	382897
8	4	EA	BEAM CLAMP MI-SGC-M12	16	1	233859
9	AS REQ'D	EA	STRUT HS-158-12/HDG 10"	1	AS REQ'D	407570
10	4	EA	CHANNEL END CAP MEK RED	50	1	244886
11	1	EA	GIRDER END CAP MIA-EC120	25	1	432078
12	1	EA	CONNECTOR MIC-S120-X STEEL (SEE TABLE)	2	1	VARIES
13	6	EA	ONEHAND SCREW MIA-OH90	10	1	304889
14	6	EA	MI HEX NUT M12-F-SL-WS 3/4"	100	1	382897