



All loading and design criteria supplied by customer is assumed accurate. Only the stated Design Assumptions were considered, and must be verified by the responsible Engineer of Record (EOR). The basis of Hilti component and connection design is the published data in the current Hilti Technical Guide, including material and cross-section properties, allowable load values, factors of safety, methods of calculation, and limiting factors. The EOR must verify suitability for any specific application, and the capacity of the supportive structure to receive the shown configuration and associated reaction loads. Modification to components and/or design may alter performance and must be evaluated by the EOR.

PROJECT NAME:

TYPICAL DETAILS

SERVICE REQUEST DESCRIPTION:

PIPING GOALPOST STEEL

DESIGNED BY: AJV
REVIEWED BY: ISE

DRAWN BY: HAM
ISSUE DATE: 02 DEC 14

REVISIONS:

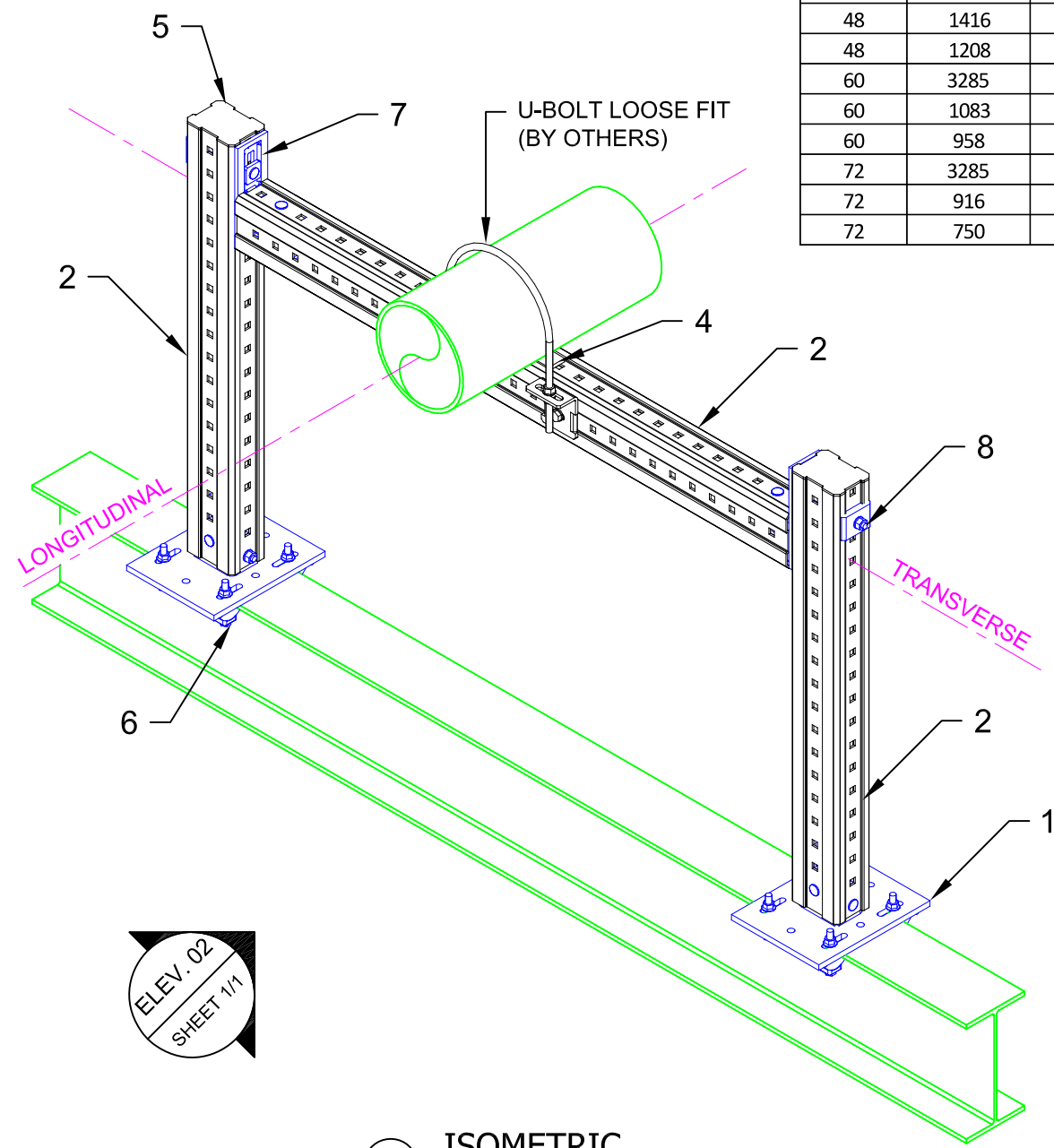
| NO. | DESCRIPTION: | DATE: |
|-----|----------------|-----------|
| A | ORIGINAL ISSUE | 02 DEC 14 |
| | | |
| | | |
| | | |
| | | |
| | | |
| | | |
| | | |
| | | |
| | | |
| | | |
| | | |
| | | |
| | | |
| | | |
| | | |
| | | |
| | | |
| | | |
| | | |
| | | |
| | | |

SERVICE REQUEST NUMBER:

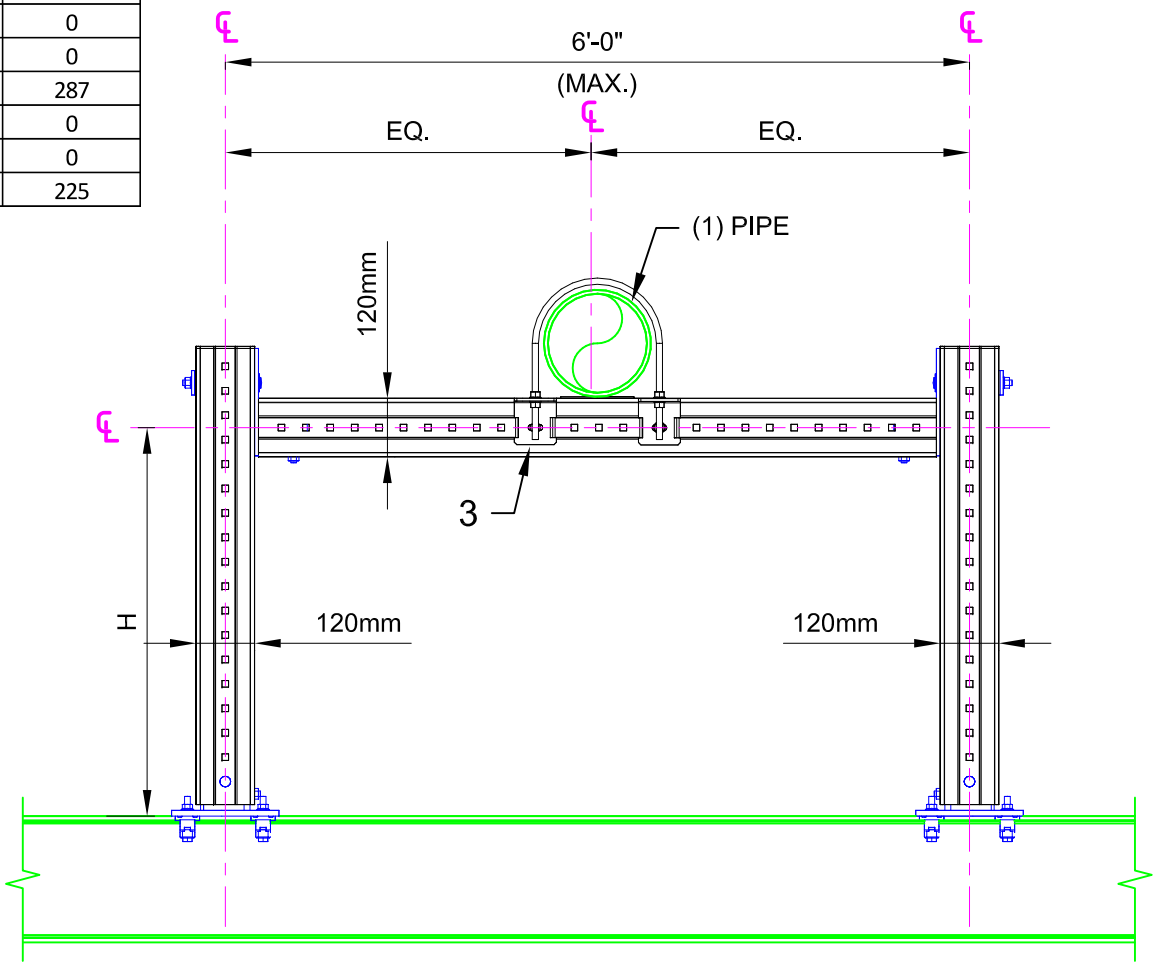
TD-P-GP04-S

DRAWING NUMBER: 01
SHEET: 1/1

| Maximum "H" (in) | Allowable Vertical Load (lbs) | Allowable Transverse Load (lbs) | Allowable Longitudinal Load (lbs) |
|------------------|-------------------------------|---------------------------------|-----------------------------------|
| 48 | 3285 | 0 | 0 |
| 48 | 1416 | 425 | 0 |
| 48 | 1208 | 0 | 362 |
| 60 | 3285 | 0 | 0 |
| 60 | 1083 | 325 | 0 |
| 60 | 958 | 0 | 287 |
| 72 | 3285 | 0 | 0 |
| 72 | 916 | 275 | 0 |
| 72 | 750 | 0 | 225 |



01 ISOMETRIC
N.T.S.



02 ELEVATION
N.T.S.

MIC-S120-X
Beam Width Table

| X | 'B' Width | Item No. |
|---|-------------|----------|
| A | 2.9 to 6.5 | 304818 |
| B | 6.5 to 9.2 | 304819 |
| C | 9.2 to 11.8 | 304820 |

| No. | Unit Qty | Unit | Description | Box Qty | # Boxes Needed | Item No. |
|-----|----------|------|--|---------|----------------|----------|
| 1 | 2 | EA | CONNECTOR MIC-S120-X STEEL (SEE TABLE) | 2 | 1 | VARIES |
| 2 | AS REQ'D | EA | GIRDER MI-120 3M | 1 | AS REQ'D | 304800 |
| 3 | 1 | EA | CONNECTOR U-BOLT MIC-UB90-M16 | 6 | 1 | 304834 |
| 4 | 2 | EA | CONNECTOR PIPE SHOE MIC-PG | 10 | 1 | 304842 |
| 5 | 2 | EA | GIRDER END CAP MIA-EC120 | 25 | 1 | 432078 |
| 6 | 8 | EA | BEAM CLAMP MI-SGC-M12 | 16 | 1 | 233859 |
| 7 | 2 | EA | CONNECTOR MIC-120-U | 4 | 1 | 304804 |
| 8 | 2 | EA | EASYHAND SCREW MIA-EH120 | 10 | 1 | 304888 |

- NOTE(S):
- ALLOWABLE LOADS CONSIDER APPROPRIATE LOAD FACTORS AND LOAD COMBINATIONS PER APPLICABLE CODES AND STANDARDS.
 - ALL LOADS ASSUMED TO ACT AT HORIZONTAL ϕ OF PIPE(S) WHICH ARE SITTING DIRECTLY ON TOP OF MI GIRDER, U.N.O.
 - VERTICAL LOAD APPLIED WITH ONE HORIZONTAL LOAD AT A TIME.

ELEV. 02
SHEET 1/1