



All loading and design criteria supplied by customer is assumed accurate. Only the stated Design Assumptions were considered, and must be verified by the responsible Engineer of Record (EOR). The basis of Hilti component and connection design is the published data in the current Hilti Technical Guide, including material and cross-section properties, allowable load values, factors of safety, methods of calculation, and limiting factors. The EOR must verify suitability for any specific application, and the capacity of the supportive structure to receive the shown configuration and associated reaction loads. Modification to components and/or design may alter performance and must be evaluated by the EOR.

PROJECT NAME:

TYPICAL DETAILS

SERVICE REQUEST DESCRIPTION:

CABLE TRAY
BRACED CANTILEVER (MQ)
CONCRETE

DESIGNED BY: AJV REVIEWED BY: ISE

DRAWN BY: GAB ISSUE DATE: 22 DEC 14

REVISIONS:

NO:	DESCRIPTION:	DATE:
A	ORIGINAL ISSUE	22 DEC 14

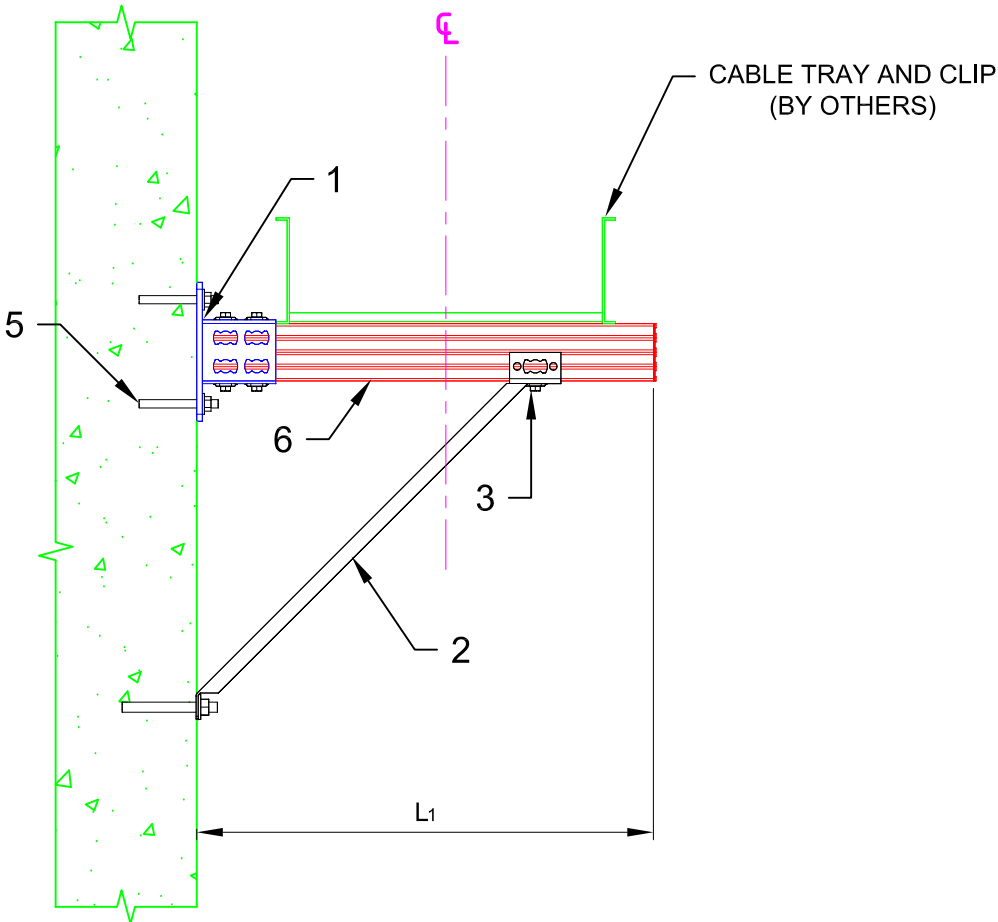
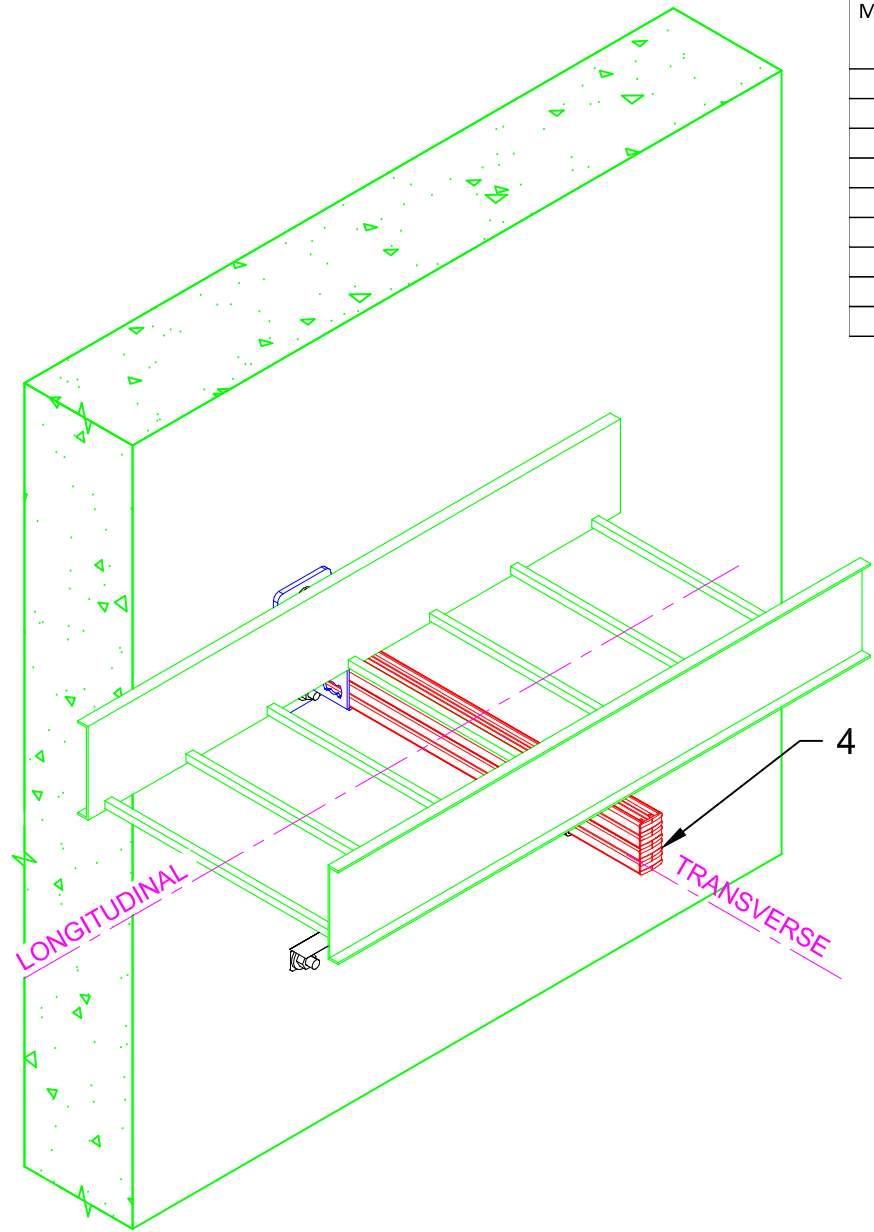
SERVICE REQUEST NUMBER:

TD-CT-BC52-C

DRAWING NUMBER: SHEET:

01 1/1

Maximum "L1" (in)	Allowable Vertical Load (lbs)	Allowable Transverse Load (lbs)	Allowable Longitudinal Load (lbs)
48	535	0	0
48	535	80	0
48	291	0	44
60	392	0	0
60	392	58	0
60	233	0	35
72	314	0	0
72	314	47	0
72	195	0	30



ELEV. 02
SHEET 1/1

01 ISOMETRIC
N.T.S.

02 ELEVATION
N.T.S.

NOTE(S):

- REFER TO TABLE FOR DIMENSIONAL LIMITATIONS BASED ON CABLE TRAY WIDTH.
- ALLOWABLE LOADS CONSIDER APPROPRIATE LOAD FACTORS AND LOAD COMBINATIONS PER APPLICABLE CODES AND STANDARDS.
- ALL LOADS ASSUMED TO ACT AT HORIZONTAL CL OF CABLE TRAY WHICH IS SITTING DIRECTLY ON TOP OF HS STRUT, U.N.O.
- VERTICAL LOAD APPLIED WITH ONE HORIZONTAL LOAD AT A TIME.
- CABLE TRAY HORIZONTAL OFFSET FROM HS POST CL = 0"

No.	Unit Qty	Unit	Description	Box Qty	# Boxes Needed	Item No.
1	1	EA	BASE MQP-82-F	1	1	304166
2	1	EA	ANGLE BRACE MQK-SL-F	10	1	304128
3	5	EA	CHANNEL CONNECTOR MQN-HDG PLUS	50	1	387779
4	4	EA	CHANNEL END CAP MEK RED	50	1	244886
5	3	EA	USE KB3 OR KB-TZ AS APPROPRIATE	VARIES	VARIES	VARIES
6	AS REQ'D	EA	STRUT HS-158-12/HDG 10' B2B	1	AS REQ'D	2007087



All loading and design criteria supplied by customer is assumed accurate. Only the stated Design Assumptions were considered, and must be verified by the responsible Engineer of Record (EOR). The basis of Hilti component and connection design is the published data in the current Hilti Technical Guide, including material and cross-section properties, allowable load values, factors of safety, methods of calculation, and limiting factors. The EOR must verify suitability for any specific application, and the capacity of the supportive structure to receive the shown configuration and associated reaction loads. Modification to components and/or design may alter performance and must be evaluated by the EOR.

PROJECT NAME:

TYPICAL DETAILS

SERVICE REQUEST DESCRIPTION:

**CABLE TRAY
BRACED CANTILEVER (MQ)
STEEL**

DESIGNED BY:

AJV

REVIEWED BY:

ISE

DRAWN BY:

GAB

ISSUE DATE:

22 DEC 14

REVISIONS:

NO.	DESCRIPTION:	DATE:
A	ORIGINAL ISSUE	22 DEC 14

SERVICE REQUEST NUMBER:

TD-CT-BC52-S

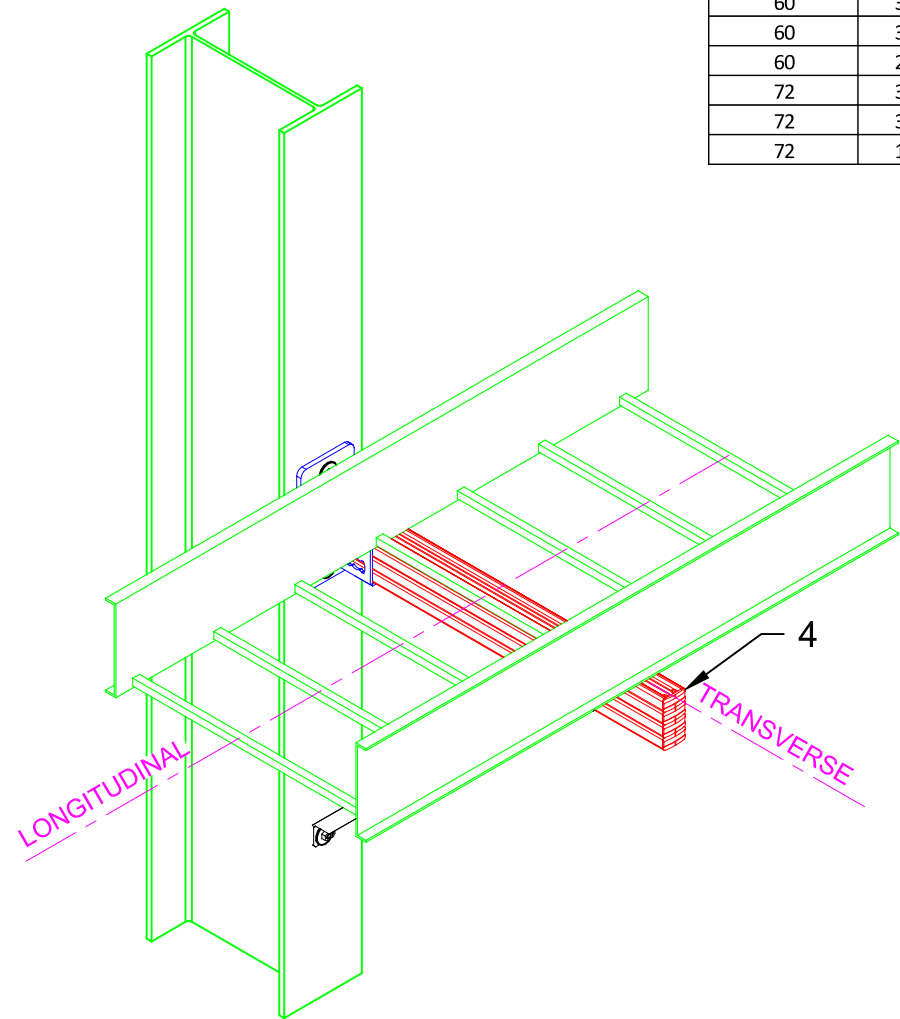
DRAWING NUMBER:

01

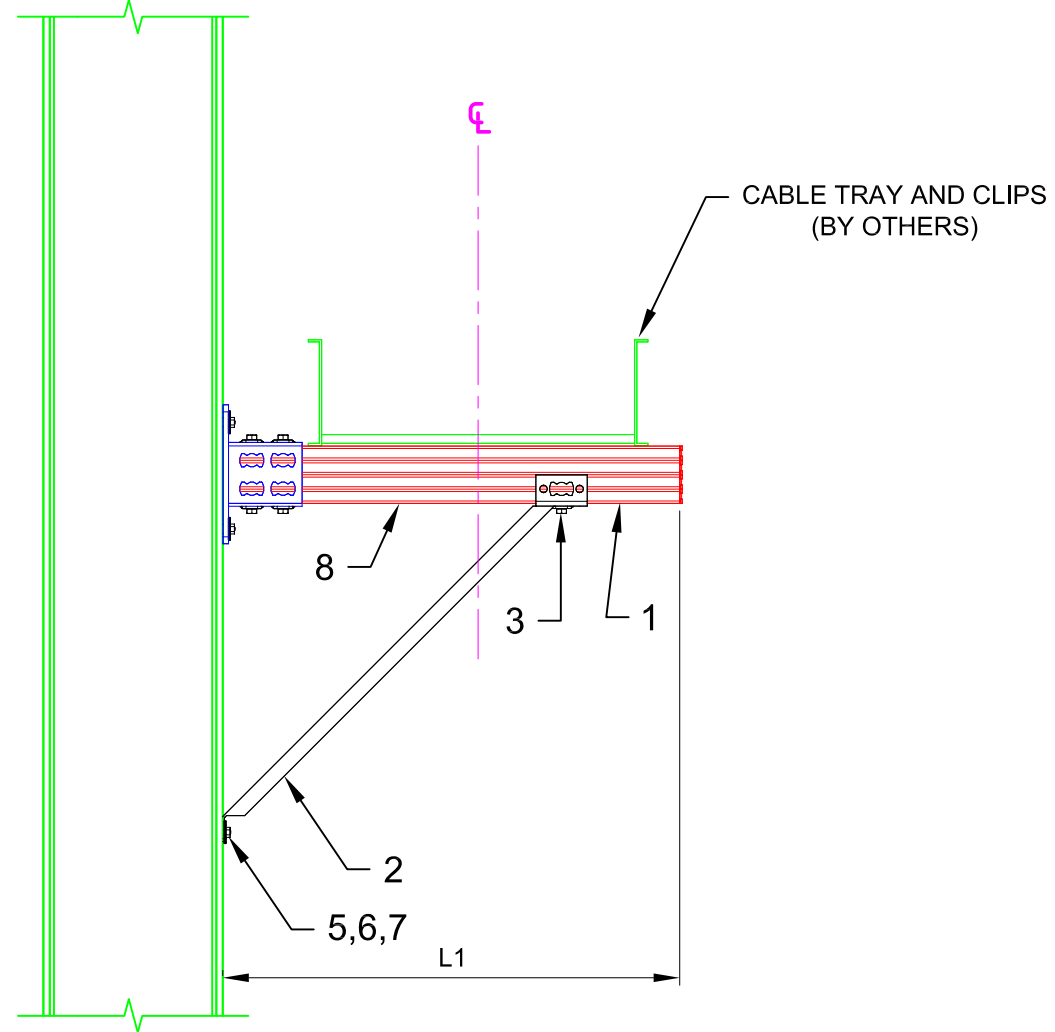
SHEET:

1/1

Maximum "L1" (in)	Allowable Vertical Load (lbs)	Allowable Transverse Load (lbs)	Allowable Longitudinal Load (lbs)
48	535	0	0
48	535	80	0
48	291	0	44
60	392	0	0
60	392	58	0
60	233	0	35
72	314	0	0
72	314	47	0
72	195	0	30



01 ISOMETRIC
N.T.S.



02 ELEVATION
N.T.S.

NOTE(S):

- REFER TO TABLE FOR DIMENSIONAL LIMITATIONS BASED ON CABLE TRAY WIDTH.
- ALLOWABLE LOADS CONSIDER APPROPRIATE LOAD FACTORS AND LOAD COMBINATIONS PER APPLICABLE CODES AND STANDARDS.
- ALL LOADS ASSUMED TO ACT AT HORIZONTAL ϵ OF CABLE TRAY WHICH IS SITTING DIRECTLY ON TOP OF HS STRUT, U.N.O.
- VERTICAL LOAD APPLIED WITH ONE HORIZONTAL LOAD AT A TIME.
- CABLE TRAY HORIZONTAL OFFSET FROM HS POST $\epsilon = 0"$

No.	Unit Qty	Unit	Description	Box Qty	# Boxes Needed	Item No.
1	1	EA	BASE MQP-82-F	1	1	304166
2	1	EA	ANGLE BRACE MQK-SL-F	10	1	304128
3	5	EA	CHANNEL CONNECTOR MQN-HDG PLUS	50	1	387779
4	4	EA	CHANNEL END CAP MEK RED	50	1	244886
5	3	EA	X-BTW10-24-6 SN12-R	100	1	377076
6	3	EA	HEX NUT-HEAVY DUTY 3/8"	100	1	411752
7	3	EA	FENDER WASHER 3/8"	1000	1	313069
8	AS REQ'D	EA	STRUT HS-158-12/HDG 10' B2B	1	AS REQ'D	2007087



All loading and design criteria supplied by customer is assumed accurate. Only the stated Design Assumptions were considered, and must be verified by the responsible Engineer of Record (EOR). The basis of Hilti component and connection design is the published data in the current Hilti Technical Guide, including material and cross-section properties, allowable load values, factors of safety, methods of calculation, and limiting factors. The EOR must verify suitability for any specific application, and the capacity of the supportive structure to receive the shown configuration and associated reaction loads. Modification to components and/or design may alter performance and must be evaluated by the EOR.

PROJECT NAME:

TYPICAL DETAILS

SERVICE REQUEST DESCRIPTION:

CABLE TRAY CANTILEVER (MQ) CONCRETE

DESIGNED BY: AJV	REVIEWED BY: ISE
---------------------	---------------------

DRAWN BY: GAB	ISSUE DATE: 22 DEC 14
------------------	--------------------------

REVISIONS:

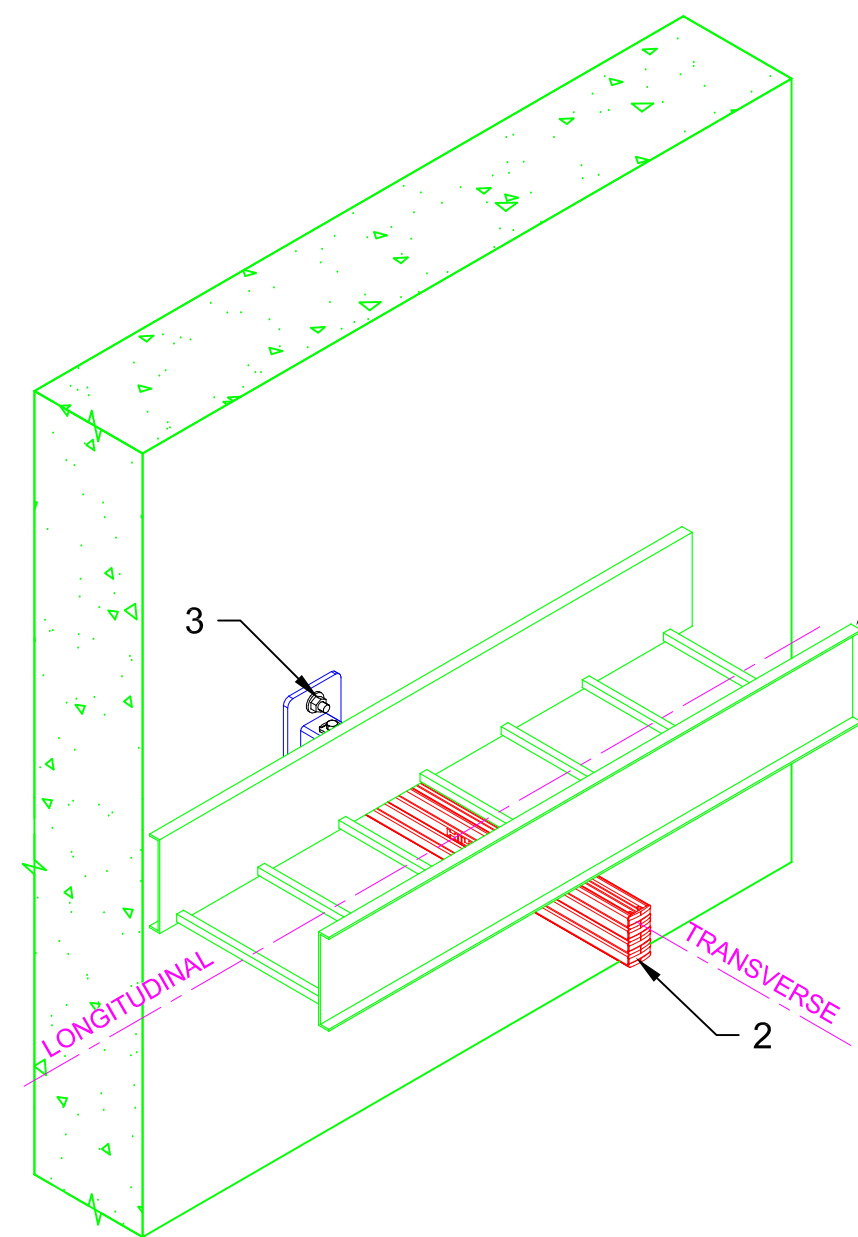
NO.	DESCRIPTION:	DATE:
A	ORIGINAL ISSUE	22 DEC 14

SERVICE REQUEST NUMBER:

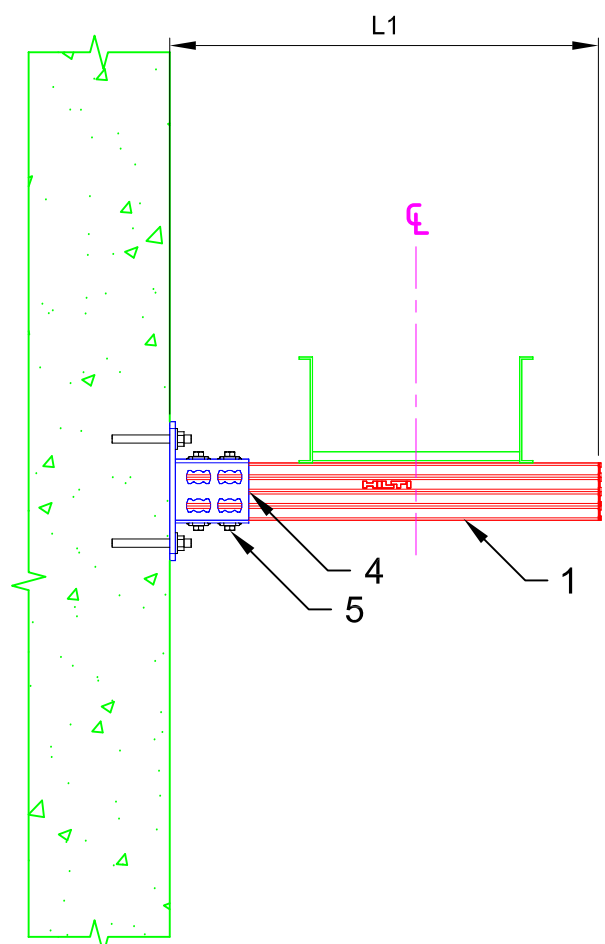
TD-CT-C55-C

DRAWING NUMBER: 01	SHEET: 1/1
------------------------------	----------------------

Maximum "L1" (in)	Allowable Vertical Load (lbs)	Allowable Transverse Load (lbs)	Allowable Longitudinal Load (lbs)
48	185	0	0
48	185	28	0
48	185	0	28
60	146	0	0
60	146	22	0
60	146	0	22
72	114	0	0
72	114	17	0
72	114	0	17



01 ISOMETRIC
N.T.S.



02 ELEVATION
N.T.S.

- NOTE(S):**
- REFER TO TABLE FOR DIMENSIONAL LIMITATIONS BASED ON CABLE TRAY WIDTH.
 - ALLOWABLE LOADS CONSIDER APPROPRIATE LOAD FACTORS AND LOAD COMBINATIONS PER APPLICABLE CODES AND STANDARDS.
 - ALL LOADS ASSUMED TO ACT AT HORIZONTAL ϵ OF CABLE TRAY WHICH IS SITTING DIRECTLY ON TOP OF HS STRUT, U.N.O.
 - VERTICAL LOAD APPLIED WITH ONE HORIZONTAL LOAD AT A TIME.
 - CABLE TRAY HORIZONTAL OFFSET FROM HS POST $\epsilon = 0''$

No.	Unit Qty	Unit	Description	Box Qty	# Boxes Needed	Item No.
1	AS REQ'D	EA	STRUT HS-158-12/HDG 10' B2B	1	AS REQ'D	2007087
2	4	EA	CHANNEL END CAP MEK RED	50	1	244886
3	2	EA	USE KB3 OR KB-TZ AS APPROPRIATE	VARIES	VARIES	VARIES
4	1	EA	RAIL SUPPORT MQP-82-F	1	1	304166
5	4	EA	CHANNEL CONNECTOR MQN-HDG PLUS	50	1	387779





All loading and design criteria supplied by customer is assumed accurate. Only the stated Design Assumptions were considered, and must be verified by the responsible Engineer of Record (EOR). The basis of Hilti component and connection design is the published data in the current Hilti Technical Guide, including material and cross-section properties, allowable load values, factors of safety, methods of calculation, and limiting factors. The EOR must verify suitability for any specific application, and the capacity of the supportive structure to receive the shown configuration and associated reaction loads. Modification to components and/or design may alter performance and must be evaluated by the EOR.

PROJECT NAME:
TYPICAL DETAILS

SERVICE REQUEST DESCRIPTION:
CABLE TRAY CANTILEVER (MQ) STEEL

DESIGNED BY: AJV	REVIEWED BY: ISE
---------------------	---------------------

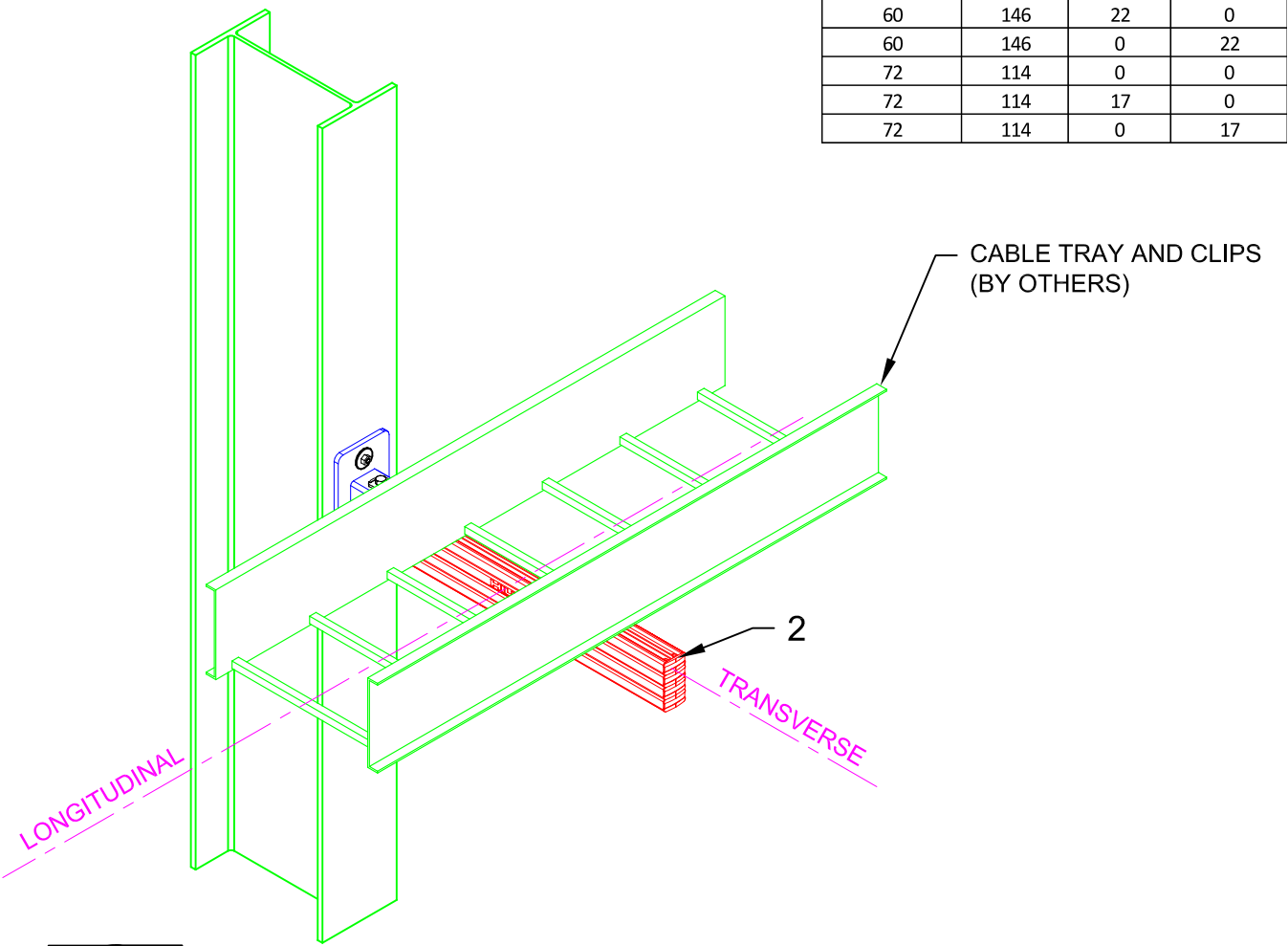
DRAWN BY: GAB	ISSUE DATE: 22 DEC 14
------------------	--------------------------

NO.	DESCRIPTION:	DATE:
A	ORIGINAL ISSUE	22 DEC 14

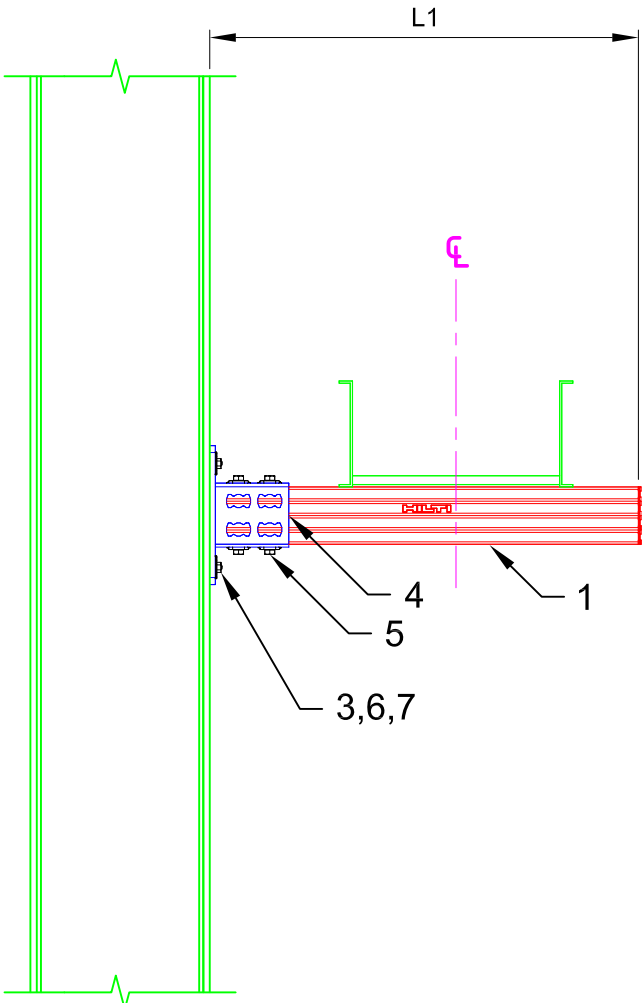
SERVICE REQUEST NUMBER:
TD-CT-C55-S

DRAWING NUMBER: 01	SHEET: 1/1
------------------------------	----------------------

Maximum "L1" (in)	Allowable Vertical Load (lbs)	Allowable Transverse Load (lbs)	Allowable Longitudinal Load (lbs)
48	185	0	0
48	185	28	0
48	185	0	28
60	146	0	0
60	146	22	0
60	146	0	22
72	114	0	0
72	114	17	0
72	114	0	17



01 ISOMETRIC
N.T.S.



02 ELEVATION
N.T.S.

- NOTE(S):
- REFER TO TABLE FOR DIMENSIONAL LIMITATIONS BASED ON CABLE TRAY WIDTH.
 - ALLOWABLE LOADS CONSIDER APPROPRIATE LOAD FACTORS AND LOAD COMBINATIONS PER APPLICABLE CODES AND STANDARDS.
 - ALL LOADS ASSUMED TO ACT AT HORIZONTAL ϕ OF CABLE TRAY WHICH IS SITTING DIRECTLY ON TOP OF HS STRUT, U.N.O.
 - VERTICAL LOAD APPLIED WITH ONE HORIZONTAL LOAD AT A TIME.
 - CABLE TRAY HORIZONTAL OFFSET FROM HS POST $\phi = 0$ "

No.	Unit Qty	Unit	Description	Box Qty	# Boxes Needed	Item No.
1	AS REQ'D	EA	STRUT HS-158-12/HDG 10' B2B	1	AS REQ'D	2007087
2	4	EA	CHANNEL END CAP MEK RED	50	1	244886
3	2	EA	X-BTW10-24-6 SN12-R	100	1	377076
4	1	EA	RAIL SUPPORT MQP-82-F	1	1	304166
5	4	EA	CHANNEL CONNECTOR MQN-HDG PLUS	50	1	387779
6	4	EA	HEX NUT-HEAVY DUTY 3/8"	100	1	411752
7	4	EA	FENDER WASHER 3/8"	1000	1	313069



All loading and design criteria supplied by customer is assumed accurate. Only the stated Design Assumptions were considered, and must be verified by the responsible Engineer of Record (EOR). The basis of Hilti component and connection design is the published data in the current Hilti Technical Guide, including material and cross-section properties, allowable load values, factors of safety, methods of calculation, and limiting factors. The EOR must verify suitability for any specific application, and the capacity of the supportive structure to receive the shown configuration and associated reaction loads. Modification to components and/or design may alter performance and must be evaluated by the EOR.

PROJECT NAME:

TYPICAL DETAILS

SERVICE REQUEST DESCRIPTION:

**CABLE TRAY
GOALPOST (MQ)
CONCRETE**

DESIGNED BY:
AJV

REVIEWED BY:
ISE

DRAWN BY:
GAB

ISSUE DATE:
22 DEC 14

REVISIONS:

NO.	DESCRIPTION:	DATE:
A	ORIGINAL ISSUE	22 DEC 14

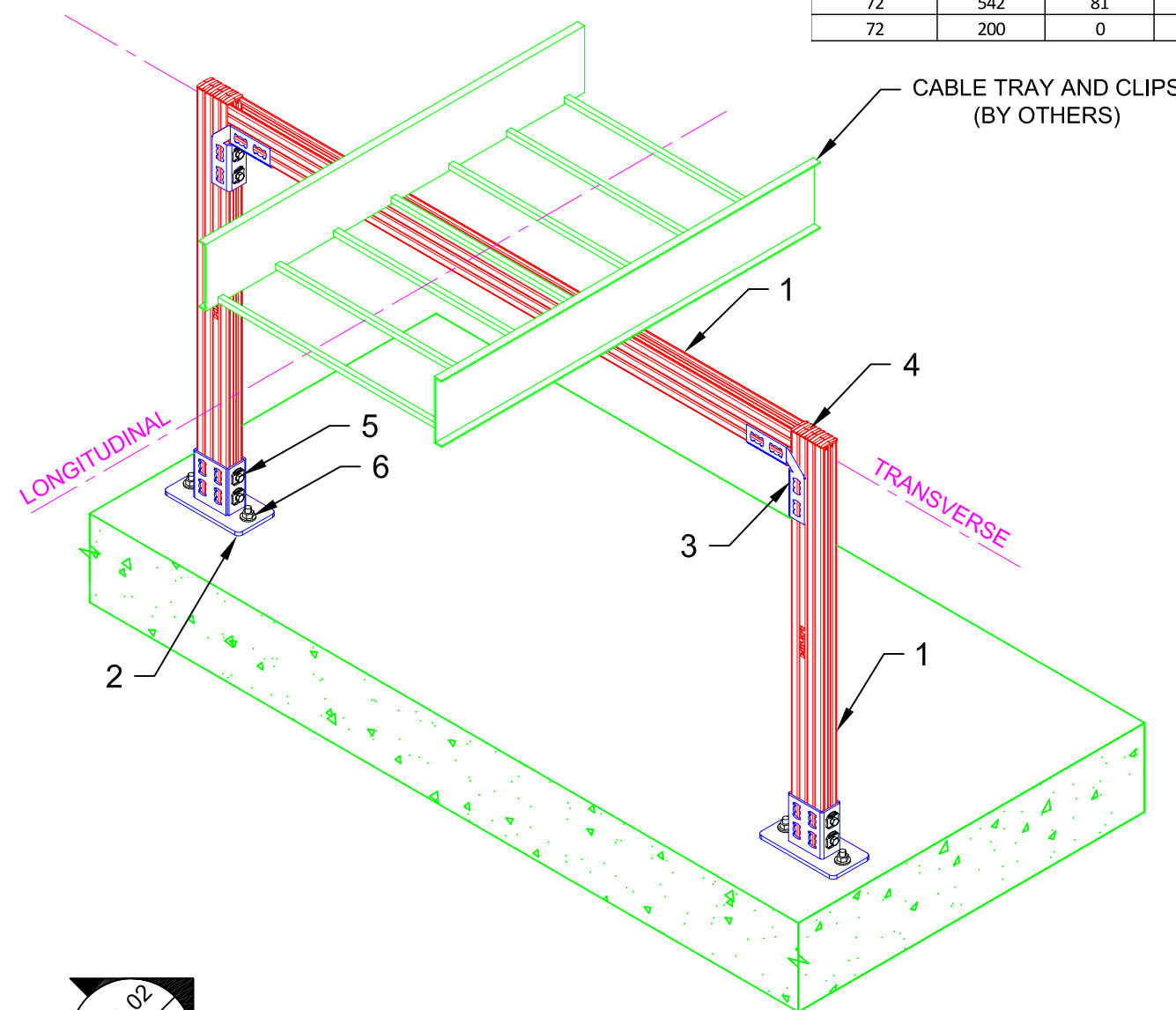
SERVICE REQUEST NUMBER:

TD-CT-GP54-C

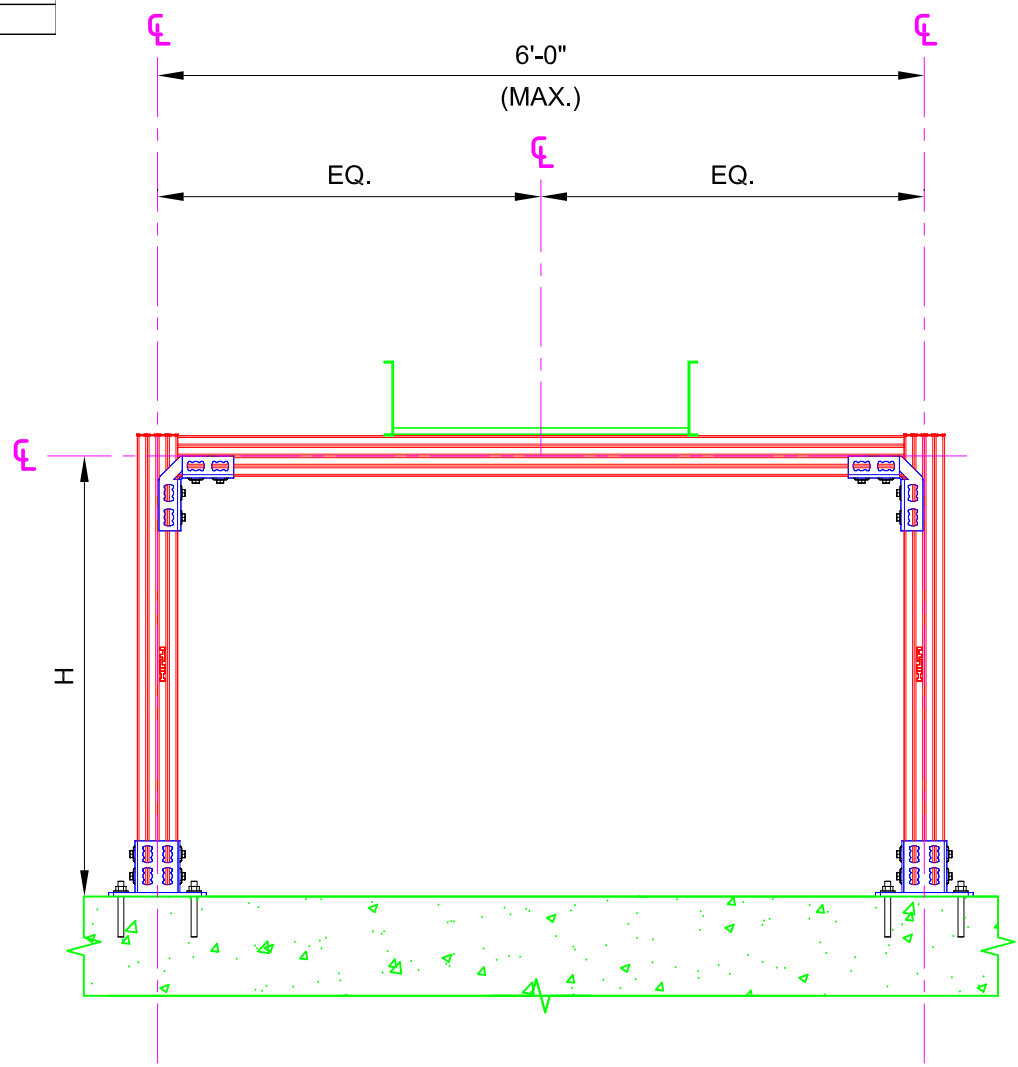
DRAWING NUMBER: **01**

SHEET: **1/1**

Maximum "H" (in)	Allowable Vertical Load (lbs)	Allowable Transverse Load (lbs)	Allowable Longitudinal Load (lbs)
48	542	0	0
48	542	81	0
48	290	0	44
60	542	0	0
60	542	81	0
60	233	0	35
72	542	0	0
72	542	81	0
72	200	0	30



01 ISOMETRIC
N.T.S.



02 ELEVATION
N.T.S.



No.	Unit Qty	Unit	Description	Box Qty	# Boxes Needed	Item No.
1	AS REQ'D	EA	STRUT HS-158-12/HDG 10' B2B	1	AS REQ'D	2007087
2	2	EA	RAIL SUPPORT MQP-82	8	1	369652
3	2	EA	8-HOLE ANGLE MQW-8/90-F	10	1	304175
4	8	EA	CHANNEL END CAP MEK RED	50	1	244886
5	16	EA	CHANNEL CONNECTOR MQN-HDG PLUS	50	1	387779
6	4	EA	USE KB3 OR KB-TZ AS APPROPRIATE	VARIABLES	VARIABLES	VARIABLES

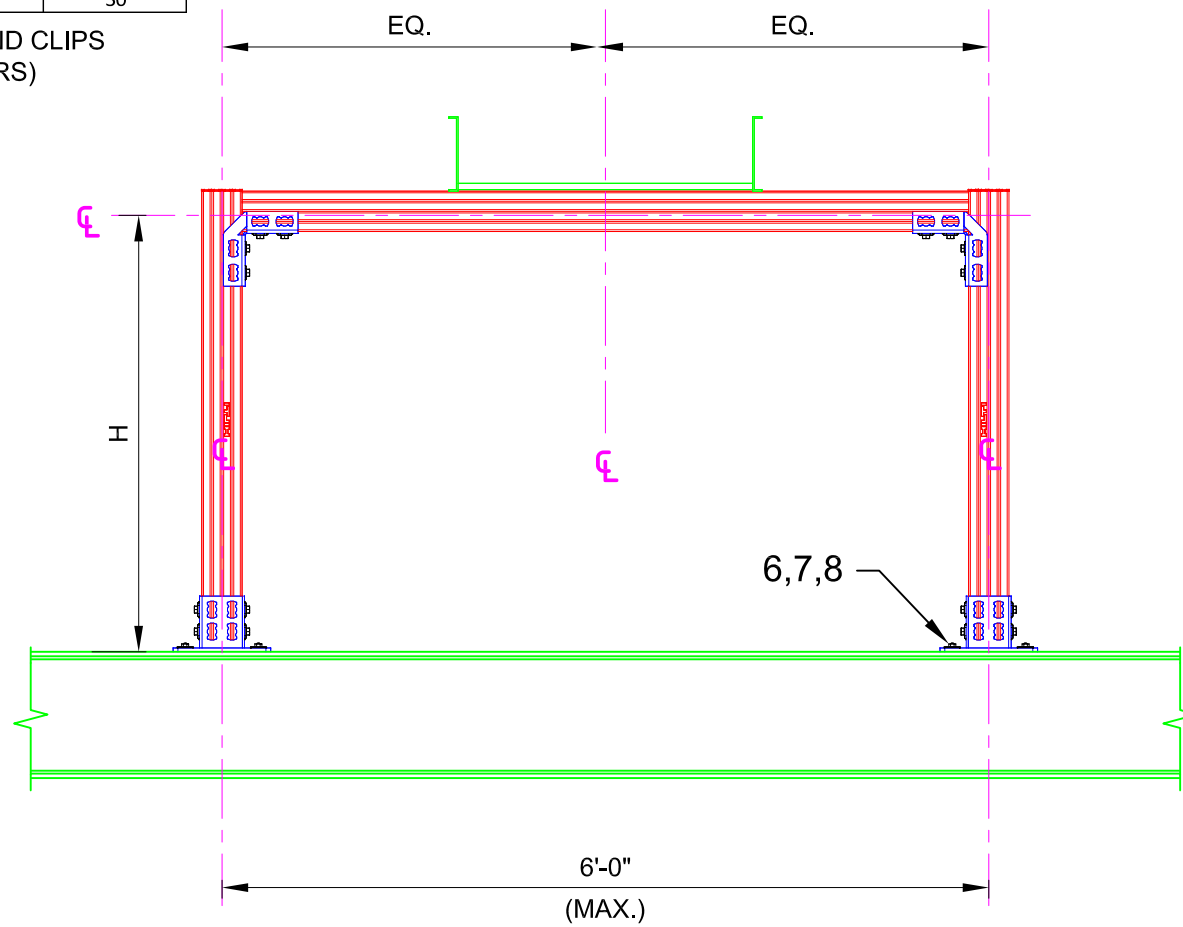
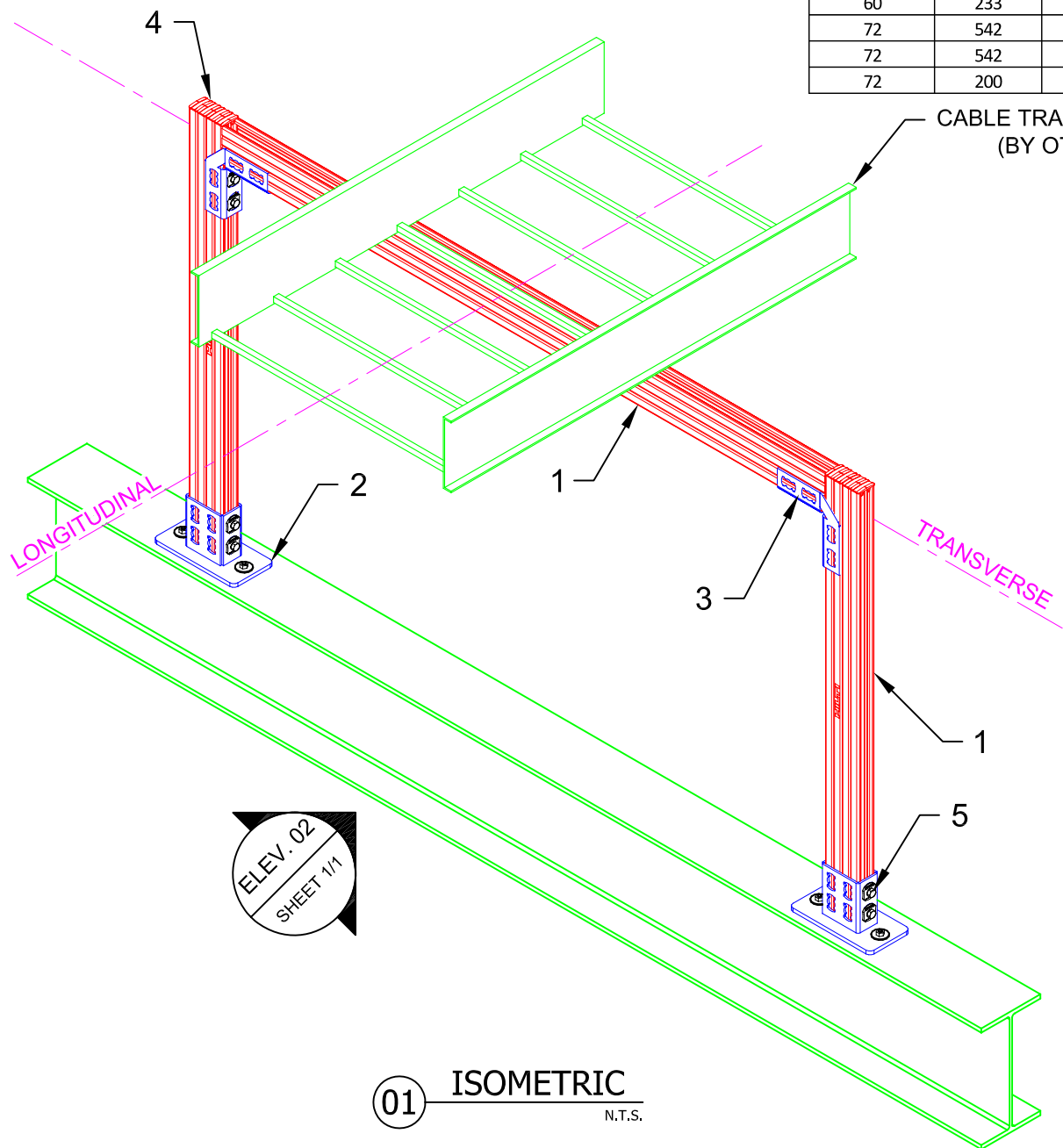
NOTE(S):

- REFER TO TABLE FOR DIMENSIONAL LIMITATIONS BASED ON CABLE TRAY WIDTH.
- ALLOWABLE LOADS CONSIDER APPROPRIATE LOAD FACTORS AND LOAD COMBINATIONS PER APPLICABLE CODES AND STANDARDS.
- ALL LOADS ASSUMED TO ACT AT HORIZONTAL ζ OF CABLE TRAY WHICH IS SITTING DIRECTLY ON TOP OF HS STRUT, U.N.O.
- VERTICAL LOAD APPLIED WITH ONE HORIZONTAL LOAD AT A TIME.
- CABLE TRAY HORIZONTAL OFFSET FROM HS POST $\zeta = 0"$



All loading and design criteria supplied by customer is assumed accurate. Only the stated Design Assumptions were considered, and must be verified by the responsible Engineer of Record (EOR). The basis of Hilti component and connection design is the published data in the current Hilti Technical Guide, including material and cross-section properties, allowable load values, factors of safety, methods of calculation, and limiting factors. The EOR must verify suitability for any specific application, and the capacity of the supportive structure to receive the shown configuration and associated reaction loads. Modification to components and/or design may alter performance and must be evaluated by the EOR.

Maximum "H" (in)	Allowable Vertical Load (lbs)	Allowable Transverse Load (lbs)	Allowable Longitudinal Load (lbs)
48	542	0	0
48	542	81	0
48	290	0	44
60	542	0	0
60	542	81	0
60	233	0	35
72	542	0	0
72	542	81	0
72	200	0	30



01 ISOMETRIC N.T.S.

02 ELEVATION N.T.S.

PROJECT NAME:

TYPICAL DETAILS

SERVICE REQUEST DESCRIPTION:

CABLE TRAY GOALPOST (MQ) STEEL

DESIGNED BY:

AJV

REVIEWED BY:

ISE

DRAWN BY:

GAB

ISSUE DATE:

22 DEC 14

REVISIONS:

NO.	DESCRIPTION:	DATE:
A	ORIGINAL ISSUE	22 DEC 14

SERVICE REQUEST NUMBER:

TD-CT-GP54-S

DRAWING NUMBER:

01

SHEET:

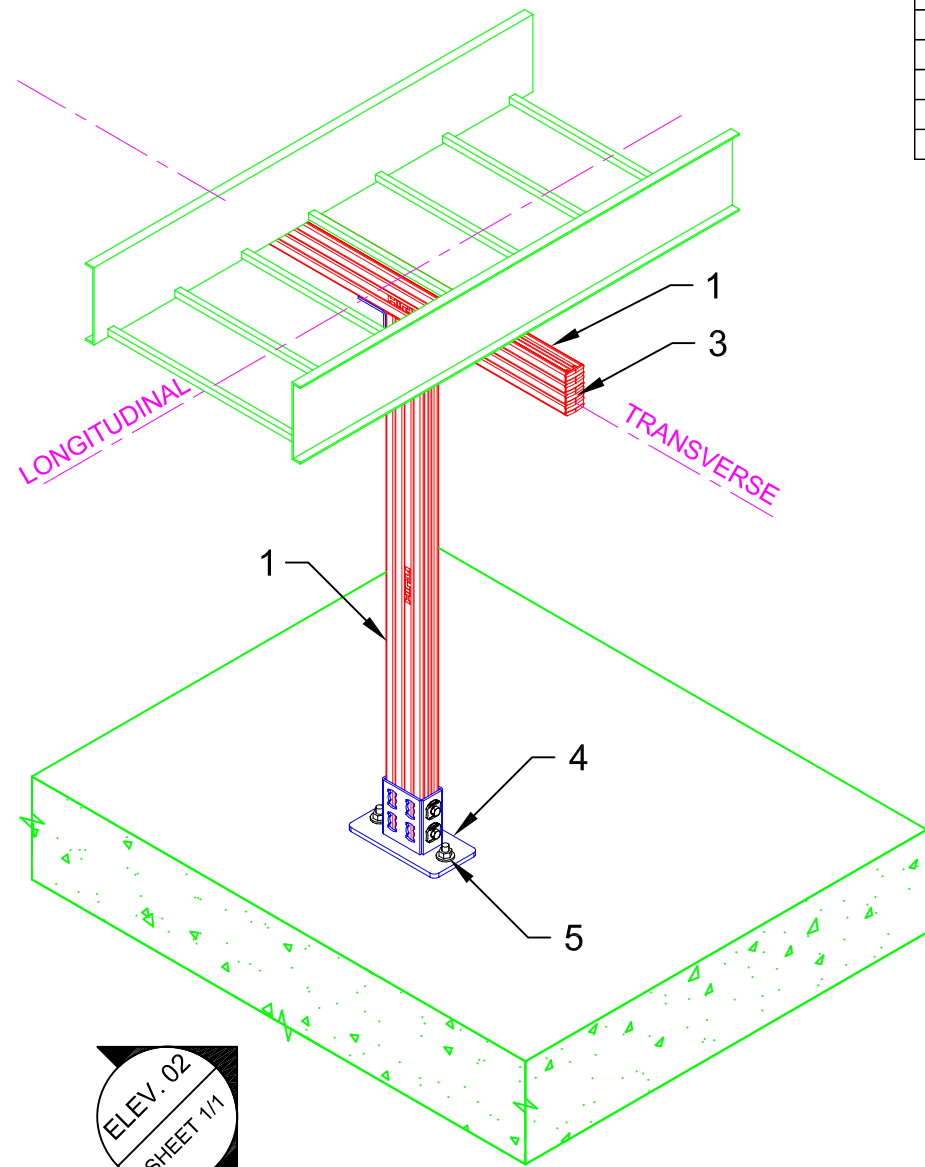
1/1

No.	Unit Qty	Unit	Description	Box Qty	# Boxes Needed	Item No.
1	AS REQ'D	EA	STRUT HS-158-12/HDG 10' B2B	1	AS REQ'D	2007087
2	2	EA	RAIL SUPPORT MQP-82	8	1	369652
3	2	EA	8-HOLE ANGLE MQW-8/90-F	10	1	304175
4	8	EA	CHANNEL END CAP MEK RED	50	1	244886
5	16	EA	CHANNEL CONNECTOR MQN-HDG PLUS	50	1	387779
6	4	EA	X-BTW10-24-6 SN12-R	100	1	377076
7	4	EA	HEX NUT-HEAVY DUTY 3/8"	100	1	411752
8	4	EA	FENDER WASHER 3/8"	1000	1	313069

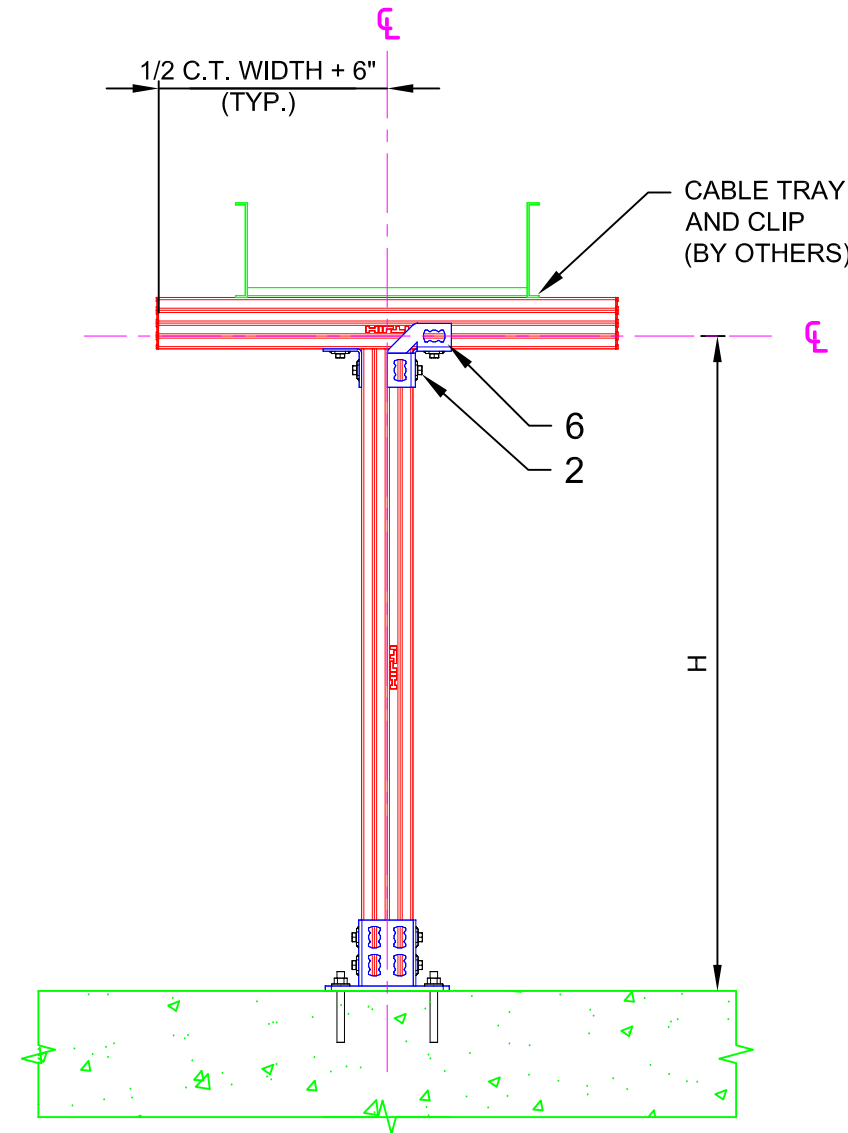
NOTE(S):

- REFER TO TABLE FOR DIMENSIONAL LIMITATIONS BASED ON CABLE TRAY WIDTH.
- ALLOWABLE LOADS CONSIDER APPROPRIATE LOAD FACTORS AND LOAD COMBINATIONS PER APPLICABLE CODES AND STANDARDS.
- ALL LOADS ASSUMED TO ACT AT HORIZONTAL \bar{c} OF CABLE TRAY WHICH IS SITTING DIRECTLY ON TOP OF HS STRUT, U.N.O.
- VERTICAL LOAD APPLIED WITH ONE HORIZONTAL LOAD AT A TIME.
- CABLE TRAY HORIZONTAL OFFSET FROM HS POST $\bar{c} = 0"$

Maximum "H" (in)	Allowable Vertical Load (lbs)	Allowable Transverse Load (lbs)	Allowable Longitudinal Load (lbs)
48	2642	0	0
48	791	119	0
48	141	0	22
60	2642	0	0
60	500	75	0
60	116	0	18
72	2642	0	0
72	333	50	0
72	96	0	15



01 ISOMETRIC
N.T.S.



02 ELEVATION
N.T.S.

No.	Unit Qty	Unit	Description	Box Qty	# Boxes Needed	Item No.
1	AS REQ'D	EA	STRUT HS-158-12/HDG 10' B2B	1	AS REQ'D	2007087
2	8	EA	CHANNEL CONNECTOR MQN-HDG PLUS	50	1	387779
3	8	EA	CHANNEL END CAP MEK RED	50	1	244886
4	1	EA	RAIL SUPPORT MQP-82	8	1	369652
5	2	EA	USE KB3 OR KB-TZ AS APPROPRIATE	VARIES	VARIES	VARIES
6	2	EA	4-HOLE ANGLE MQW-4	10	1	369658

NOTE(S):

- REFER TO TABLE FOR DIMENSIONAL LIMITATIONS BASED ON CABLE TRAY WIDTH.
- ALLOWABLE LOADS CONSIDER APPROPRIATE LOAD FACTORS AND LOAD COMBINATIONS PER APPLICABLE CODES AND STANDARDS.
- ALL LOADS ASSUMED TO ACT AT HORIZONTAL ζ OF CABLE TRAY WHICH IS SITTING DIRECTLY ON TOP OF HS STRUT, U.N.O.
- VERTICAL LOAD APPLIED WITH ONE HORIZONTAL LOAD AT A TIME.
- CABLE TRAY HORIZONTAL OFFSET FROM HS POST $\zeta = 0"$



All loading and design criteria supplied by customer is assumed accurate. Only the stated Design Assumptions were considered, and must be verified by the responsible Engineer of Record (EOR). The basis of Hilti component and connection design is the published data in the current Hilti Technical Guide, including material and cross-section properties, allowable load values, factors of safety, methods of calculation, and limiting factors. The EOR must verify suitability for any specific application, and the capacity of the supportive structure to receive the shown configuration and associated reaction loads. Modification to components and/or design may alter performance and must be evaluated by the EOR.

PROJECT NAME:

TYPICAL DETAILS

SERVICE REQUEST DESCRIPTION:

CABLE TRAY T-POST (MQ) CONCRETE

DESIGNED BY: AJV	REVIEWED BY: ISE
---------------------	---------------------

DRAWN BY: GAB	ISSUE DATE: 22 DEC 14
------------------	--------------------------

REVISIONS:

NO.	DESCRIPTION:	DATE:
A	ORIGINAL ISSUE	22 DEC 14

SERVICE REQUEST NUMBER:

TD-CT-TP51-C

DRAWING NUMBER: 01	SHEET: 1/1
------------------------------	----------------------



All loading and design criteria supplied by customer is assumed accurate. Only the stated Design Assumptions were considered, and must be verified by the responsible Engineer of Record (EOR). The basis of Hilti component and connection design is the published data in the current Hilti Technical Guide, including material and cross-section properties, allowable load values, factors of safety, methods of calculation, and limiting factors. The EOR must verify suitability for any specific application, and the capacity of the supportive structure to receive the shown configuration and associated reaction loads. Modification to components and/or design may alter performance and must be evaluated by the EOR.

PROJECT NAME:

TYPICAL DETAILS

SERVICE REQUEST DESCRIPTION:

CABLE TRAY T-POST (MQ) STEEL

DESIGNED BY:
AJV

REVIEWED BY:
ISE

DRAWN BY:
GAB

ISSUE DATE:
22 DEC 14

REVISIONS:

NO.	DESCRIPTION:	DATE:
A	ORIGINAL ISSUE	22 DEC 14

SERVICE REQUEST NUMBER:

TD-CT-TP51-S

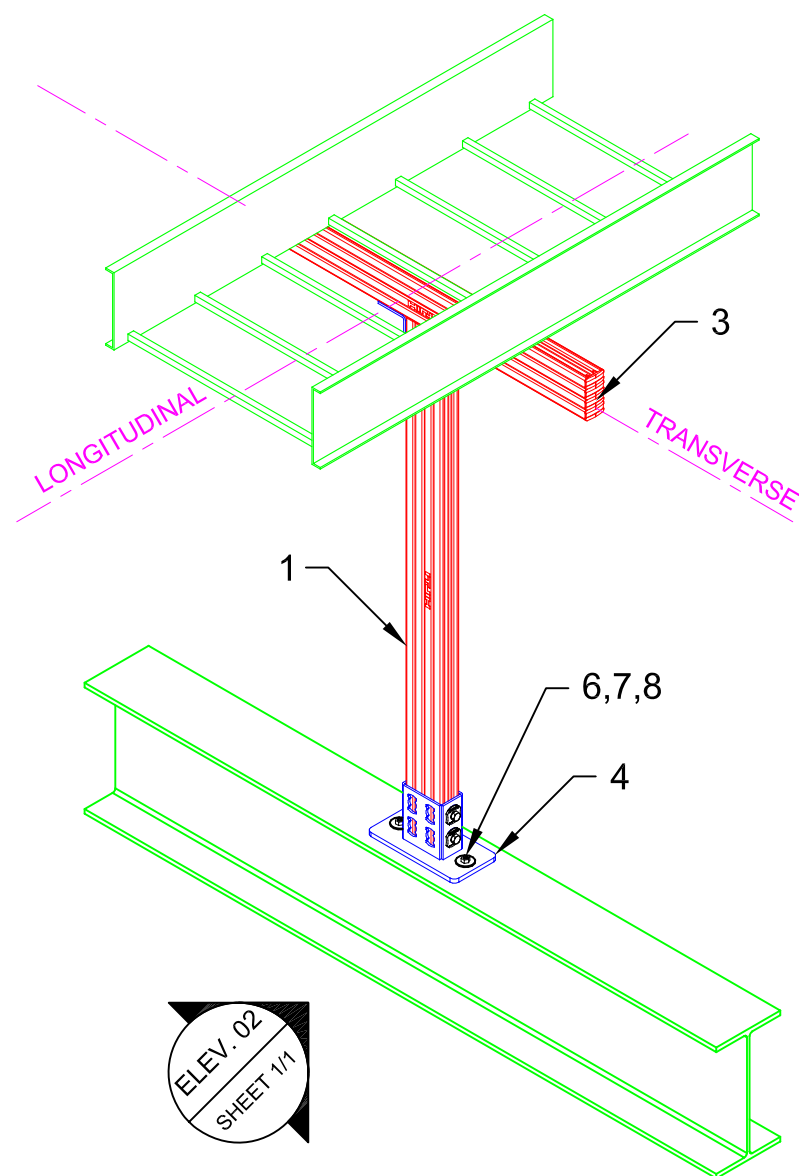
DRAWING NUMBER:

01

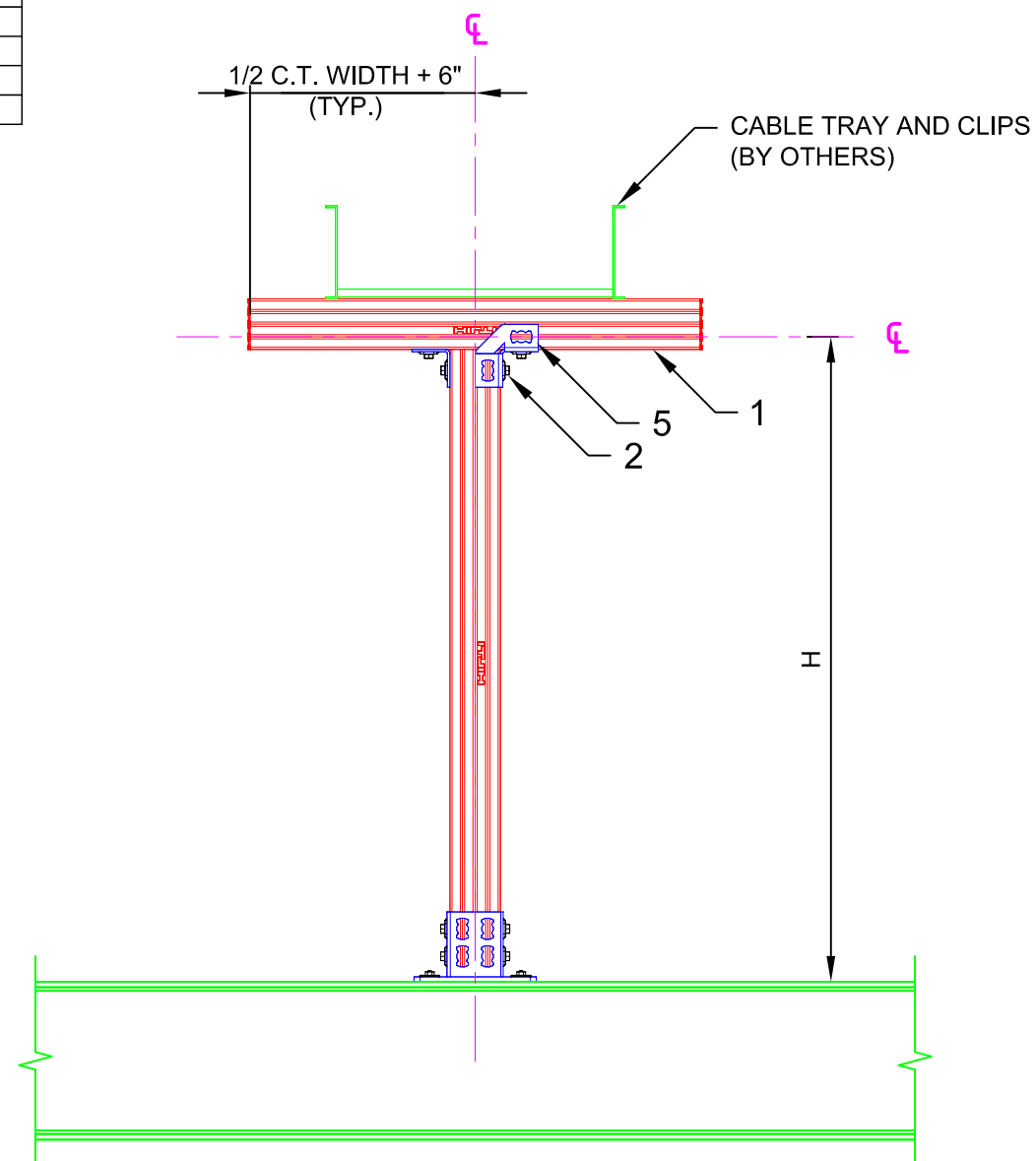
SHEET:

1/1

Maximum "H" (in)	Allowable Vertical Load (lbs)	Allowable Transverse Load (lbs)	Allowable Longitudinal Load (lbs)
48	2642	0	0
48	791	119	0
48	141	0	22
60	2642	0	0
60	500	75	0
60	116	0	18
72	2642	0	0
72	333	50	0
72	96	0	15



01 ISOMETRIC
N.T.S.



02 ELEVATION
N.T.S.

NOTE(S):

- REFER TO TABLE FOR DIMENSIONAL LIMITATIONS BASED ON CABLE TRAY WIDTH.
- ALLOWABLE LOADS CONSIDER APPROPRIATE LOAD FACTORS AND LOAD COMBINATIONS PER APPLICABLE CODES AND STANDARDS.
- ALL LOADS ASSUMED TO ACT AT HORIZONTAL ζ OF CABLE TRAY WHICH IS SITTING DIRECTLY ON TOP OF HS STRUT, U.N.O.
- VERTICAL LOAD APPLIED WITH ONE HORIZONTAL LOAD AT A TIME.
- CABLE TRAY HORIZONTAL OFFSET FROM HS POST $\zeta = 0"$

No.	Unit Qty	Unit	Description	Box Qty	# Boxes Needed	Item No.
1	AS REQ'D	EA	STRUT HS-158-12/HDG 10' B2B	1	AS REQ'D	2007087
2	8	EA	CHANNEL CONNECTOR MQN-HDG PLUS	50	1	387779
3	8	EA	CHANNEL END CAP MEK RED	50	1	244886
4	1	EA	RAIL SUPPORT MQP-82	8	1	369652
5	2	EA	4-HOLE ANGLE MQW-4	10	1	369658
6	2	EA	X-BTW10-24-6 SN12-R	100	1	377076
7	2	EA	HEX NUT-HEAVY DUTY 3/8"	100	1	411752
8	2	EA	FENDER WASHER 3/8"	1000	1	313069



All loading and design criteria supplied by customer is assumed accurate. Only the stated Design Assumptions were considered, and must be verified by the responsible Engineer of Record (EOR). The basis of Hilti component and connection design is the published data in the current Hilti Technical Guide, including material and cross-section properties, allowable load values, factors of safety, methods of calculation, and limiting factors. The EOR must verify suitability for any specific application, and the capacity of the supportive structure to receive the shown configuration and associated reaction loads. Modification to components and/or design may alter performance and must be evaluated by the EOR.

PROJECT NAME:

TYPICAL DETAILS

SERVICE REQUEST DESCRIPTION:

CABLE TRAY TRAPEZE (MQ) CONCRETE

DESIGNED BY:

AJV

REVIEWED BY:

ISE

DRAWN BY:

GAB

ISSUE DATE:

22 DEC 14

REVISIONS:

NO.	DESCRIPTION:	DATE:
A	ORIGINAL ISSUE	22 DEC 14

SERVICE REQUEST NUMBER:

TD-CT-TR53-C

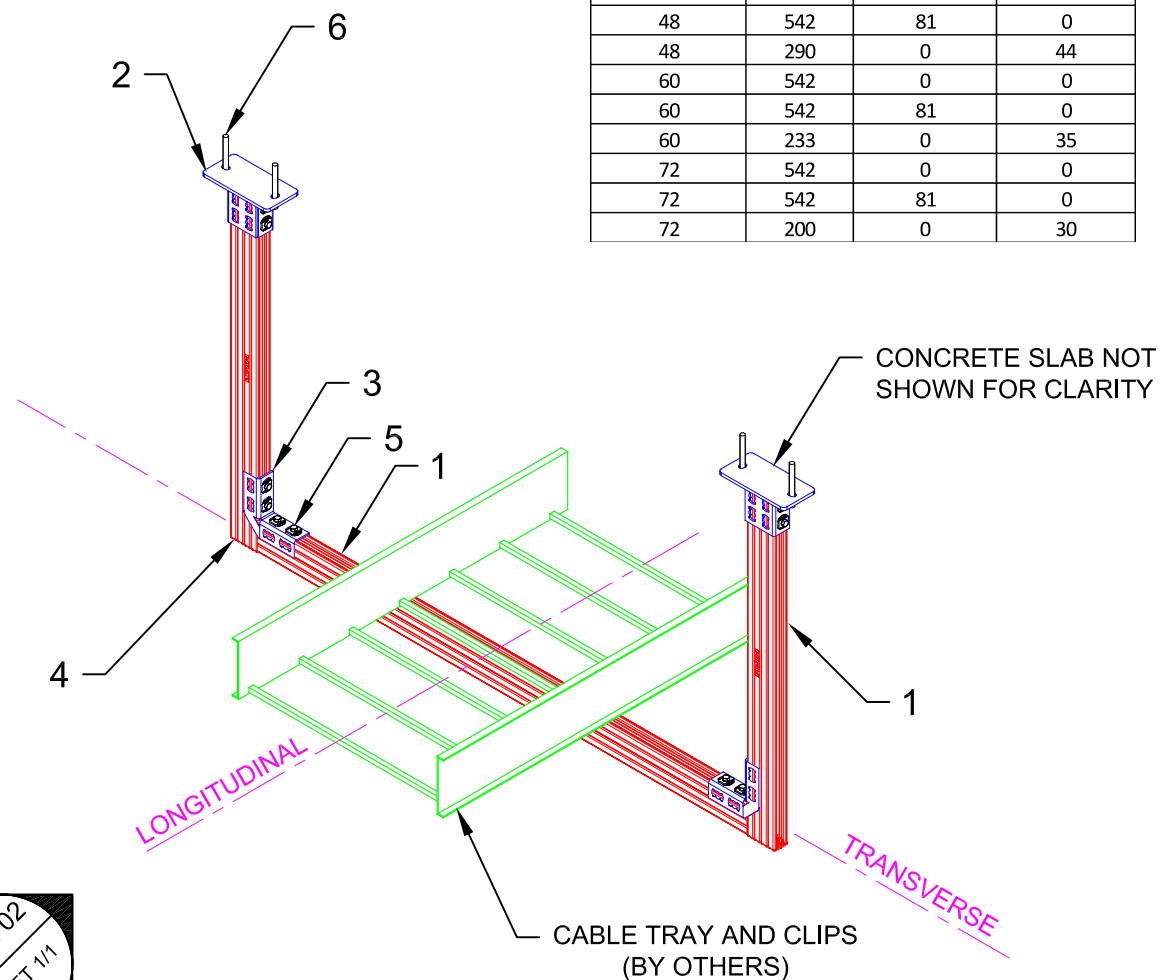
DRAWING NUMBER:

01

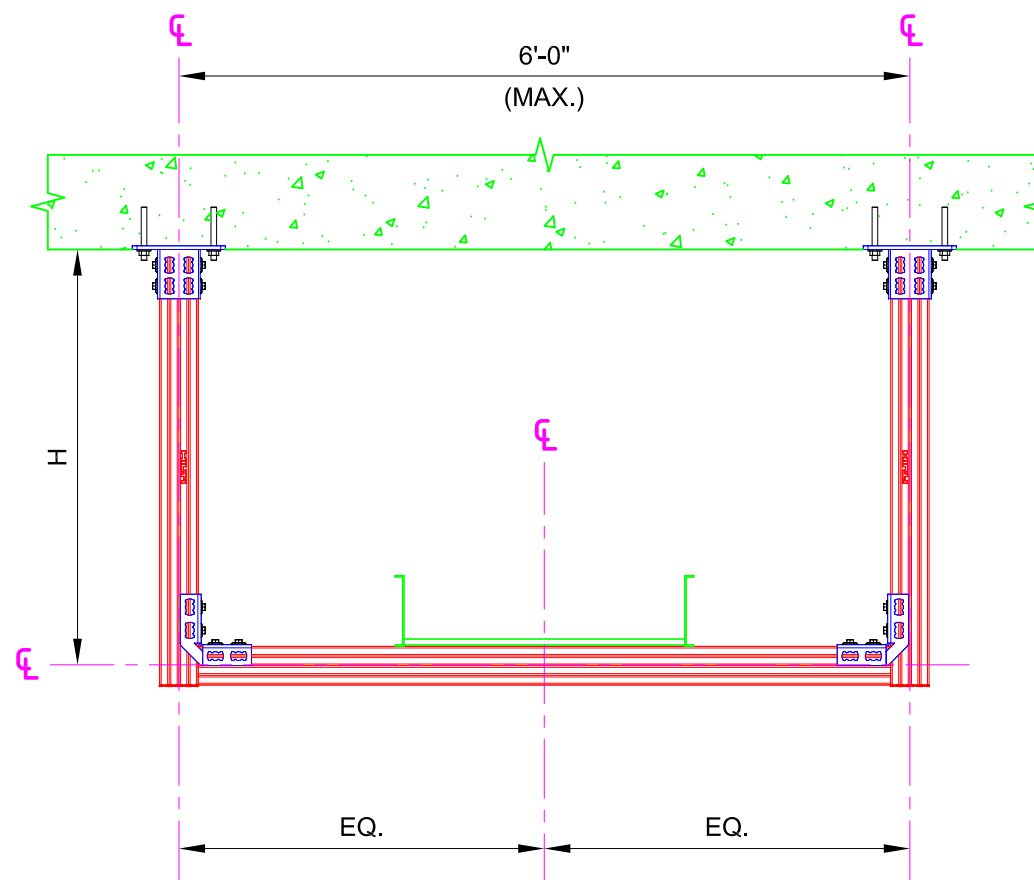
SHEET:

1/1

Maximum "H" (in)	Allowable Vertical Load (lbs)	Allowable Transverse Load (lbs)	Allowable Longitudinal Load (lbs)
48	542	0	0
48	542	81	0
48	290	0	44
60	542	0	0
60	542	81	0
60	233	0	35
72	542	0	0
72	542	81	0
72	200	0	30



01 ISOMETRIC
N.T.S.

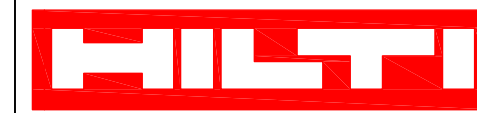


02 ELEVATION
N.T.S.

No.	Unit Qty	Unit	Description	Box Qty	# Boxes Needed	Item No.
1	AS REQ'D	EA	STRUT HS-158-12/HDG 10' B2B	1	AS REQ'D	2007087
2	2	EA	RAIL SUPPORT MQP-82	8	1	369652
3	2	EA	8-HOLE ANGLE MQW-8/90-F	10	1	304175
4	8	EA	CHANNEL END CAP MEK RED	50	1	244886
5	16	EA	CHANNEL CONNECTOR MQN-HDG PLUS	50	1	387779
6	4	EA	USE KB-TZ AS APPROPRIATE	VARIABLES	VARIABLES	VARIABLES

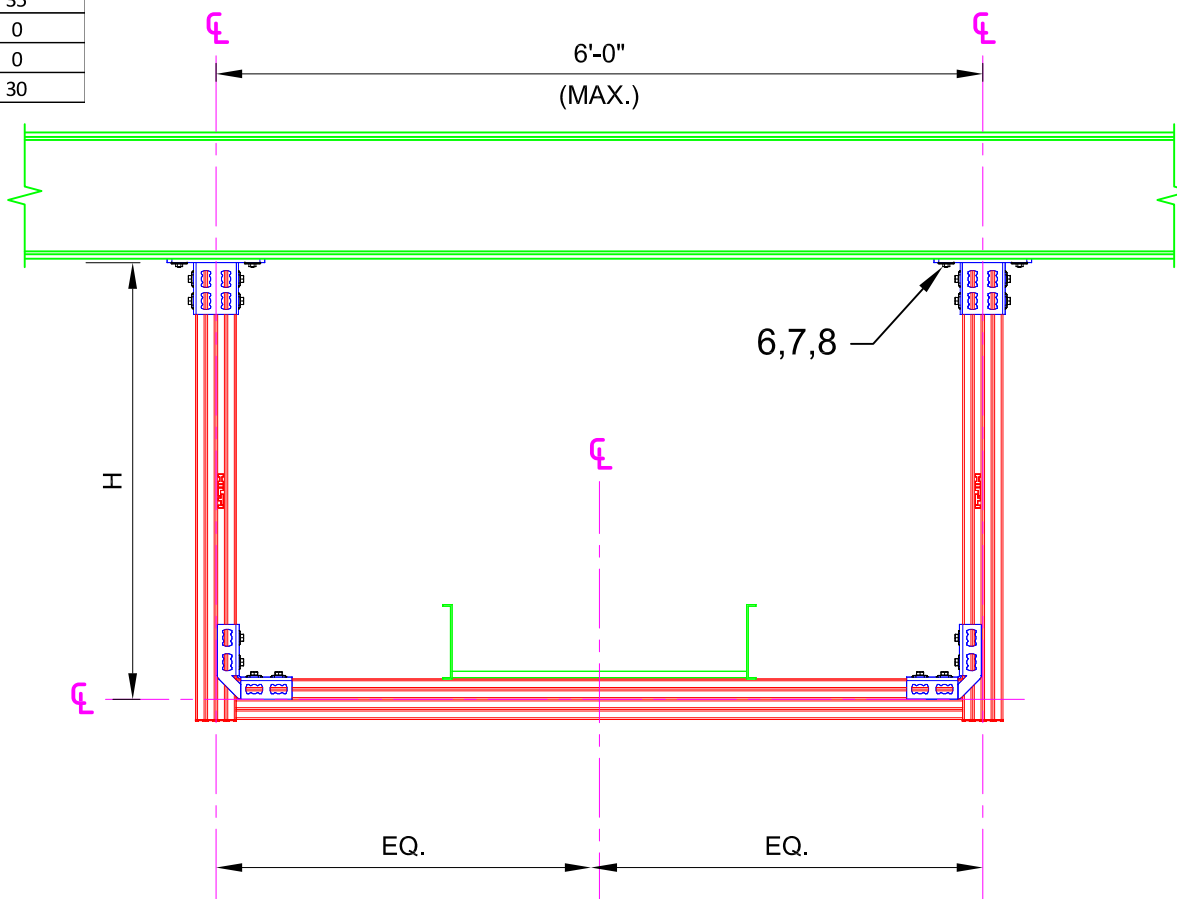
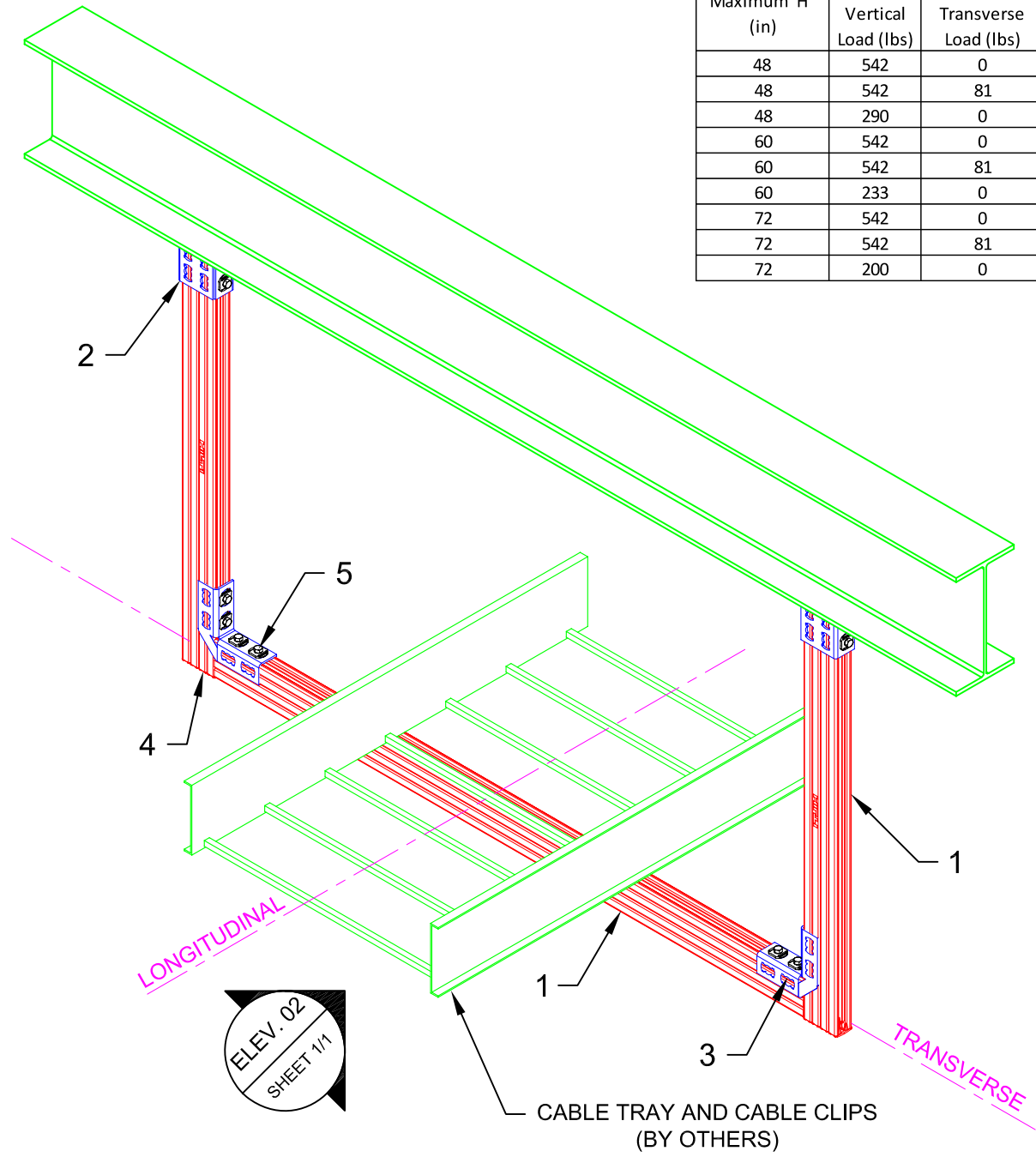
NOTE(S):

- REFER TO TABLE FOR DIMENSIONAL LIMITATIONS BASED ON CABLE TRAY WIDTH.
- ALLOWABLE LOADS CONSIDER APPROPRIATE LOAD FACTORS AND LOAD COMBINATIONS PER APPLICABLE CODES AND STANDARDS.
- ALL LOADS ASSUMED TO ACT AT HORIZONTAL ⊥ OF CABLE TRAY WHICH IS SITTING DIRECTLY ON TOP OF HS STRUT, U.N.O.
- VERTICAL LOAD APPLIED WITH ONE HORIZONTAL LOAD AT A TIME.
- CABLE TRAY HORIZONTAL OFFSET FROM HS POST ⊥ = 0"



All loading and design criteria supplied by customer is assumed accurate. Only the stated Design Assumptions were considered, and must be verified by the responsible Engineer of Record (EOR). The basis of Hilti component and connection design is the published data in the current Hilti Technical Guide, including material and cross-section properties, allowable load values, factors of safety, methods of calculation, and limiting factors. The EOR must verify suitability for any specific application, and the capacity of the supportive structure to receive the shown configuration and associated reaction loads. Modification to components and/or design may alter performance and must be evaluated by the EOR.

Maximum "H" (in)	Allowable Vertical Load (lbs)	Allowable Transverse Load (lbs)	Allowable Longitudinal Load (lbs)
48	542	0	0
48	542	81	0
48	290	0	44
60	542	0	0
60	542	81	0
60	233	0	35
72	542	0	0
72	542	81	0
72	200	0	30



PROJECT NAME:
TYPICAL DETAILS

SERVICE REQUEST DESCRIPTION:
**CABLE TRAY
TRAPEZE (MQ)
STEEL**

DESIGNED BY: AJV	REVIEWED BY: ISE
---------------------	---------------------

DRAWN BY: GAB	ISSUE DATE: 22 DEC 14
------------------	--------------------------

REVISIONS:

NO.	DESCRIPTION:	DATE:
A	ORIGINAL ISSUE	22 DEC 14

SERVICE REQUEST NUMBER:
TD-CT-TR53-S

DRAWING NUMBER: 01	SHEET: 1/1
------------------------------	----------------------

No.	Unit Qty	Unit	Description	Box Qty	# Boxes Needed	Item No.
1	AS REQ'D	EA	STRUT HS-158-12/HDG 10' B2B	1	AS REQ'D	2007087
2	2	EA	RAIL SUPPORT MQP-82	8	1	369652
3	2	EA	8-HOLE ANGLE MQW-8/90-F	10	1	304175
4	8	EA	CHANNEL END CAP MEK RED	50	1	244886
5	16	EA	CHANNEL CONNECTOR MQN-HDG PLUS	50	1	387779
6	4	EA	X-BTW10-24-6 SN12-R	100	1	377076
7	4	EA	HEX NUT-HEAVY DUTY 3/8"	100	1	411752
8	4	EA	FENDER WASHER 3/8"	1000	1	313069

- NOTE(S):
- REFER TO TABLE FOR DIMENSIONAL LIMITATIONS BASED ON CABLE TRAY WIDTH.
 - ALLOWABLE LOADS CONSIDER APPROPRIATE LOAD FACTORS AND LOAD COMBINATIONS PER APPLICABLE CODES AND STANDARDS.
 - ALL LOADS ASSUMED TO ACT AT HORIZONTAL ζ OF CABLE TRAY WHICH IS SITTING DIRECTLY ON TOP OF HS STRUT, U.N.O.
 - VERTICAL LOAD APPLIED WITH ONE HORIZONTAL LOAD AT A TIME.
 - CABLE TRAY HORIZONTAL OFFSET FROM HS POST $\zeta = 0"$