

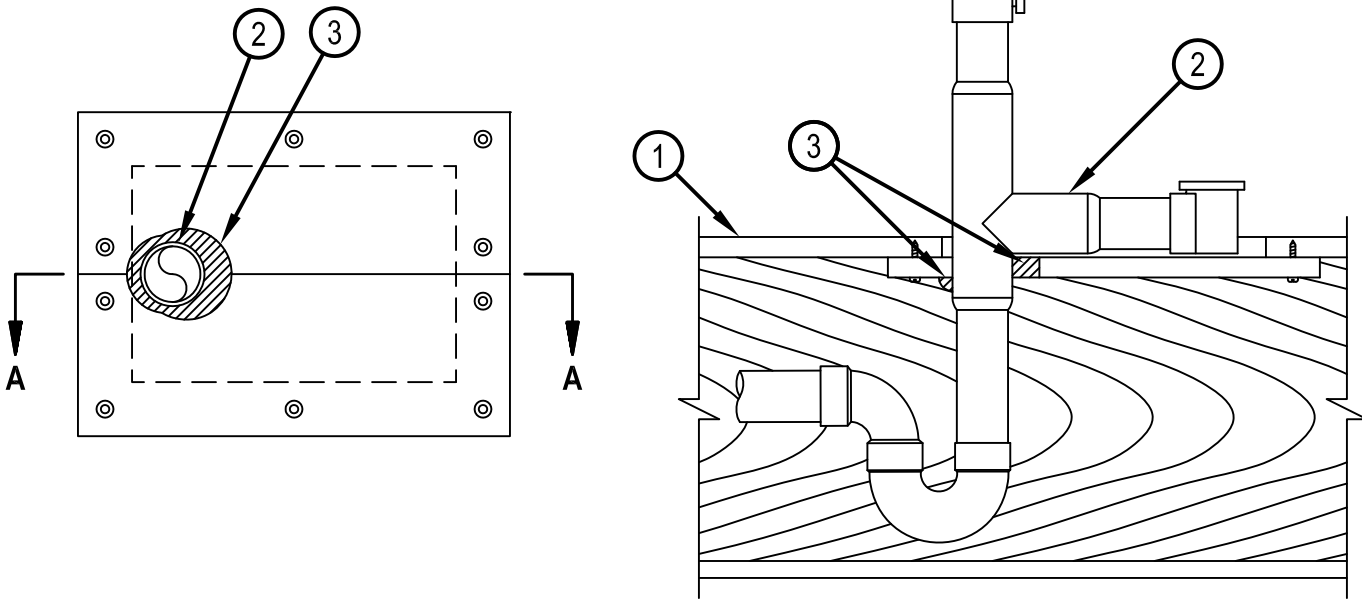


Classified by
Underwriters Laboratories, Inc.
to UL 1479

System No. F-C-2262

F Rating - 1 Hr
T Rating - 1 Hr

FC 2262



SECTION A-A

1. Floor-Ceiling Assembly — The 1 hr fire-rated solid or trussed lumber joist floor-ceiling assembly shall be constructed of the materials and in the manner specified in the individual L500 Series Floor-Ceiling Designs in the UL Fire Resistance Directory. The general construction features of the floor-ceiling assembly are summarized below:

A. Flooring System — Lumber or plywood subfloor with finish floor of lumber, plywood or Floor Topping Mixture* as specified in the individual Floor-Ceiling Design. Rectangular cutout in flooring to accommodate the bathtub drain piping (Item 2) to be max 8 in. (203 mm) by 12 in. (305 mm). Cutout to be patched on underside of subfloor using one layer of min 3/4 in. (19 mm) thick plywood or min 5/8 in. (16 mm) thick gypsum board (Item 1C) sized to lap min 2 in. (51 mm) beyond each edge of rectangular cutout. Patch split into two pieces at opening and hole-sawed for bathtub drain piping. Diam of opening hole sawed through patch to accommodate drain piping (Item 2) to be 1 in. (25 mm) larger than outside diam of drain piping and positioned such that the annular space between drain piping and periphery of opening is min 0 in. (point contact) to max 1 in. (25 mm). Two pieces positioned around drain piping, with cut edges tightly butted, and screw-attached to underside of subfloor with 1-1/4 in. (32 mm) long steel screws spaced max 6 in. (152 mm) OC.

B. Wood Joists* — Nom 10 in. (254 mm) deep (or deeper) lumber, steel or combination lumber and steel joists, trusses or Structural Wood Members* with bridging as required and with ends firestopped.

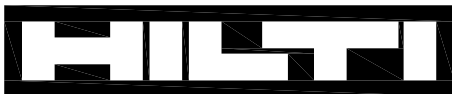
C. Gypsum Board* — Nom 5/8 in. (16 mm) thick, 4 ft (1.2 m) wide as specified in the individual Floor-Ceiling Design.

2. Drain Piping — Nom 1-1/2 in. (38 mm) diam (or smaller) Schedule 40 acrylonitrile butadiene styrene (ABS) or polyvinyl chloride (PVC) pipe and drain fittings cemented together and provided with ABS or PVC bathtub waste/overflow fittings. Annular space shall be min 0 in. (point contact) to max 1 in. (25 mm).

3. Fill, Void or Cavity Materials* — Min 5/8 in. (16 mm) depth of fill material applied within the annulus, flush with both surfaces of plywood or gypsum board patch. A min 1/2 in. (13 mm) diameter bead of sealant applied at the pipe/plywood or pipe/gypsum board interface at point contact location on the bottom side of patch.

HILTI CONSTRUCTION CHEMICALS, DIV OF HILTI INC — CP 606 Flexible Firestop Sealant, Type FS-ONE Sealant or FS-ONE MAX Intumescent Sealant

* Indicates such products shall bear the UL or cUL Certification Mark for jurisdictions employing the UL or cUL Certification (such as Canada), respectively.



Hilti Firestop Systems

Reproduced by HILTI, Inc. Courtesy of
Underwriters Laboratories, Inc.

January 15, 2015