

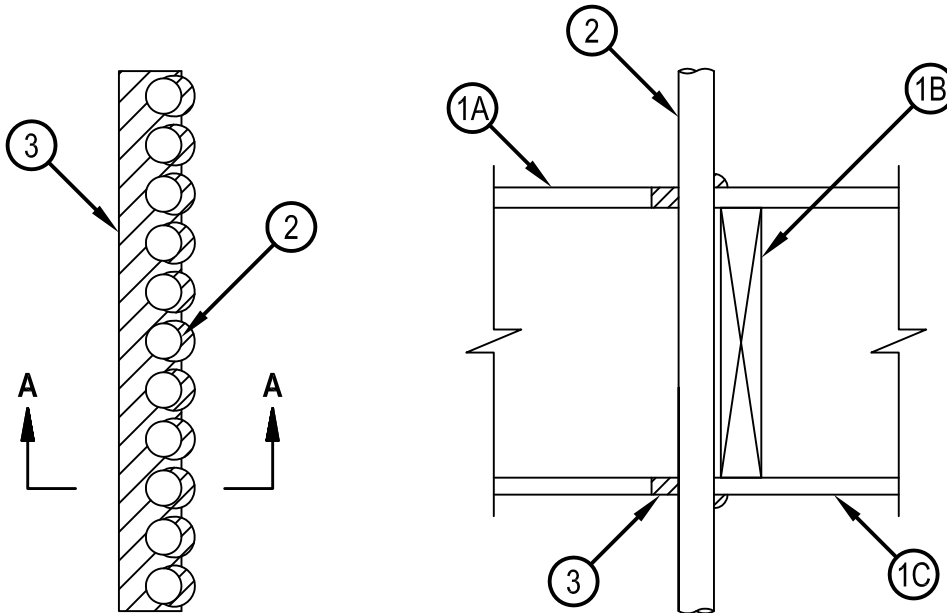


Classified by
Underwriters Laboratories, Inc.
to UL 1479 and CAN/ULC-S115

System No. F-C-3094

ANSI/UL1479 (ASTM E814)	CAN/ULC S115
F Rating — 1 Hr	F Rating — 1 Hr
T Rating — 1 Hr	FT Rating — 1 Hr
	FH Rating — 1 Hr
	FTH Rating — 1 Hr

FC 3094



SECTION A-A

1. Floor-Ceiling Assembly — The 1 hr fire-rated solid or trussed lumber joist Floor-Ceiling assembly shall be constructed of the materials and in the manner specified in the individual L500 Series Floor-Ceiling Designs in the UL Fire Resistance Directory, as summarized below:

 - A. Flooring System — Lumber or plywood subfloor with finish floor of lumber, plywood or Floor Topping Mixture* as specified in the individual Floor-Ceiling Design. Max area of floor opening is 40 in² (258 cm²) with max dimension of 20 in. (508 mm).
 - B. Joists — Nom 10 in. (254 mm) deep (or deeper) lumber and steel joist, trusses or Structural Wood Members* with bridging as required and with ends firestopped.
 - C. Gypsum Board* — Nom 4 ft (122 cm) wide by 5/8 in. (16 mm) thick. Gypsum board direct-attached to joists or screw-attached to furring channels as specified in the individual Floor-Ceiling Design. Max area of opening in ceiling is 40 in² (258 cm²) with max dimension of 20 in. (508 mm).
2. Cables — One or more cables to be installed either concentrically or eccentricity within the firestop system. The annular space between each cable and the periphery of the opening shall be 0 in. (point contact) to max 1 in. (25 mm). The annular space between individual cables shall be min 1/4 in. (6 mm) to max 1/2 in. (13 mm). Cables to be rigidly supported on both sides of floor-ceiling assembly. The following types and sizes of cables may be used:

 - A. Max 3/C (with ground) No. 2/0 AWG aluminum conductor service entrance cable with PVC insulation and jacket materials.
3. Fill, Void or Cavity Material* — Sealant — Min 3/4 in. (19 mm) thickness of fill material applied within the annulus, flush with top surface of floor. At the bottom of assembly, a min 5/8 in. (16 mm) thickness of fill material applied within annulus, flush with the surface of the ceiling. Additional fill material to be installed such that a min 1/2 in. (13 mm) diam bead is applied at the cable/floor and cable/ceiling interface at all point contact locations.

HILTI CONSTRUCTION CHEMICALS, DIV OF HILTI INC — FS-ONE Sealant or FS-ONE MAX Intumescent Sealant

* Indicates such products shall bear the UL or cUL Certification Mark for jurisdictions employing the UL or cUL Certification (such as Canada), respectively.



Hilti Firestop Systems

Reproduced by HILTI, Inc. Courtesy of
Underwriters Laboratories, Inc.

January 20, 2015