

UL SYSTEM NO. C-AJ-5352

INSULATED PLASTIC PIPE THROUGH CONCRETE FLOOR/WALL OR BLOCK WALL

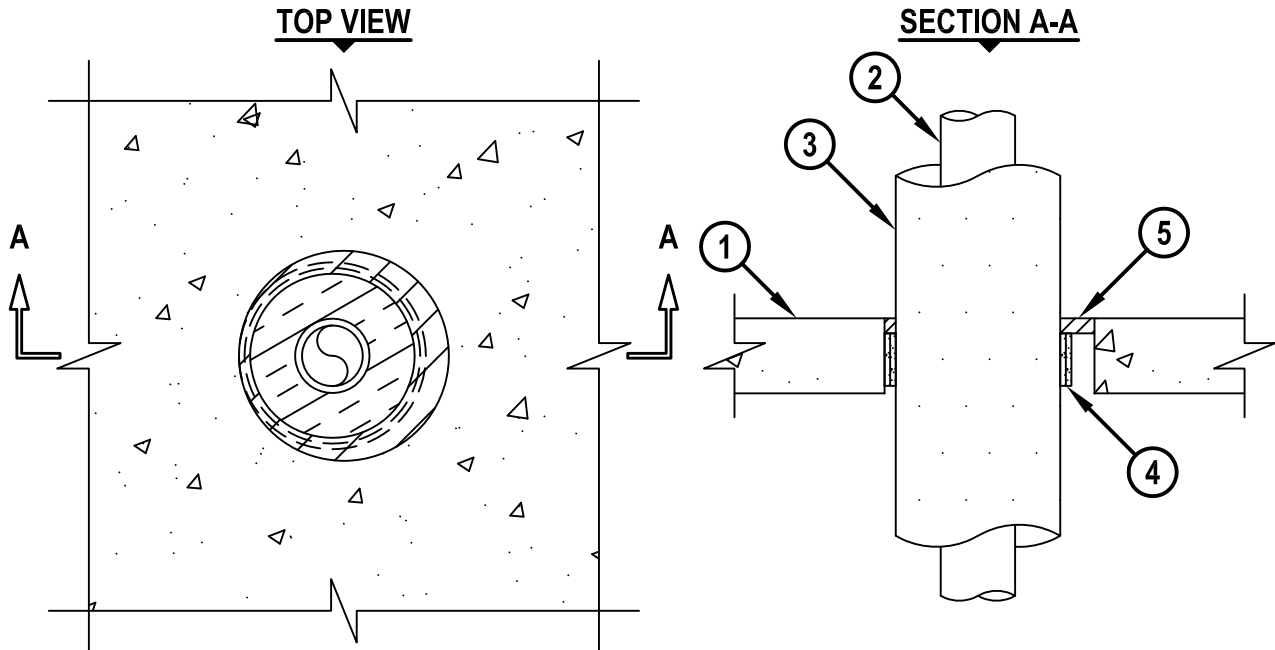
F-RATING = 2-HR.

T-RATING = 0-HR. OR 1-HR.

L-RATING AT AMBIENT = 4 CFM / SQ FT

L-RATING AT 400°F = LESS THAN 1 CFM / SQ FT

CAJ5352a.040615



1. CONCRETE FLOOR OR WALL ASSEMBLY (2-HR. FIRE-RATING) :
 - A. LIGHTWEIGHT OR NORMAL WEIGHT CONCRETE FLOOR (MINIMUM 2-1/2" THICK).
 - B. LIGHTWEIGHT OR NORMAL WEIGHT CONCRETE WALL (MINIMUM 2-3/4" THICK).
 - C. ANY UL CLASSIFIED CONCRETE BLOCK WALL.
2. PENETRATING ITEM TO BE ONE OF THE FOLLOWING :
 - A. MAXIMUM 2" (63mm) NOMINAL DIAMETER FUSIOTHERM (SDR 11) PP PLASTIC PIPE (MANUFACTURED BY AQUATHERM, INC.) (CLOSED PIPING SYSTEM).
 - B. MAXIMUM 2" (63mm) NOMINAL DIAMETER POLYSTAR CT-WHITE (SDR 11) PP PLASTIC PIPE (MANUFACTURED BY ORION) (CLOSED PIPING SYSTEM).
3. NOMINAL 1/2" TO 1-1/2" THICK GLASS-FIBER PIPE INSULATION.
4. HILTI CP 648E WRAP STRIP (NOMINAL 3/16" THICK x 1-3/4" WIDE) CONTINUOUSLY WRAPPED AROUND THE OUTER CIRCUMFERENCE OF THE INSULATED PIPE, COVERING TWO TIMES, WITH ENDS BUTTED AND HELD IN PLACE WITH TAPE. WRAP STRIP RECESSED 1/4" FROM BOTTOM SURFACE OF CONCRETE FLOOR.
5. MINIMUM 1/2" DEPTH HILTI FS-ONE MAX INTUMESCENT FIRESTOP SEALANT FLUSH WITH TOP SURFACE OF FLOOR.

NOTES : 1. MAXIMUM DIAMETER OF OPENING = 7".
2. ANNULAR SPACE = MINIMUM 3/8", MAXIMUM 1-1/8".
3. HILTI CP 648E WRAP STRIP AND HILTI FS-ONE MAX INTUMESCENT FIRESTOP SEALANT ARE REQUIRED ON BOTH SIDES OF A WALL.



HILTI, Inc.
Tulsa, Oklahoma USA (800) 879-8000

Sheet	1 of 1
Scale	5/32" = 1"
Date	Apr. 06, 2015

Drawing No.

CAJ
5352a

Saving Lives through Innovation and Education