

UL SYSTEM NO. F-C-2429

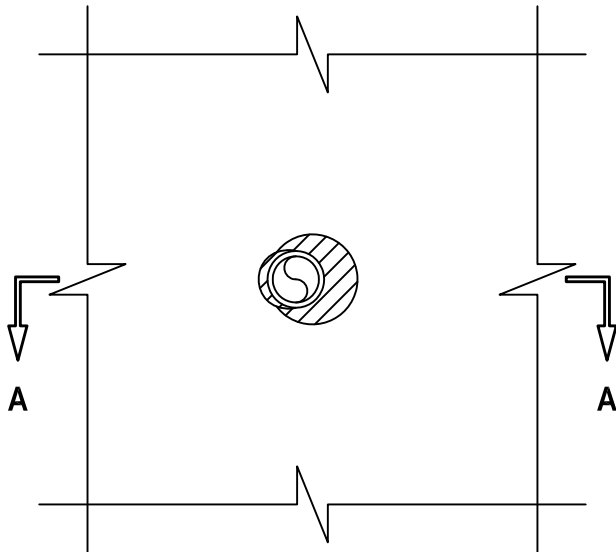
PLASTIC PIPE THROUGH WOOD FLOOR/CEILING ASSEMBLY

F-RATING = 1-HR.

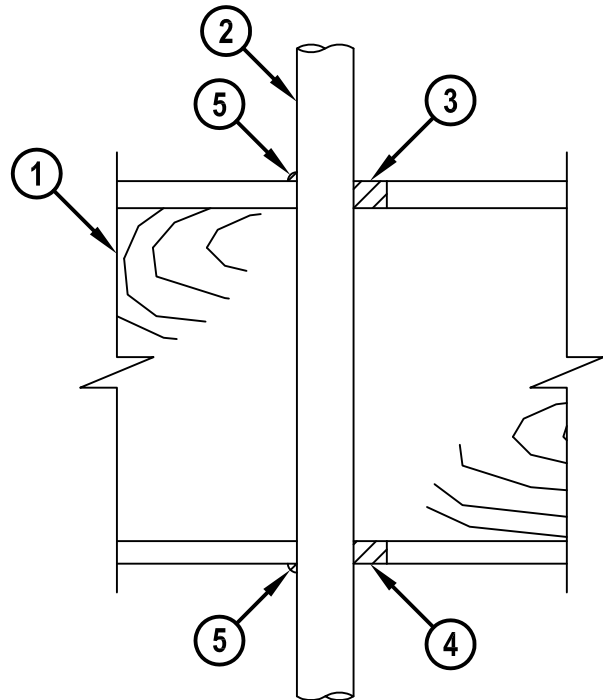
T-RATING = 1-HR.

FC2429a.040615

BOTTOM VIEW



SECTION A-A



1. WOOD FLOOR/CEILING ASSEMBLY (UL CLASSIFIED L500 SERIES) (1-HR. FIRE-RATING).
2. PENETRATING ITEM TO BE ONE OF THE FOLLOWING :
 - A. MAXIMUM 1-1/2" (40mm) NOMINAL DIAMETER FUSIOTHERM (SDR 11) PP PLASTIC PIPE (MANUFACTURED BY AQUATHERM, INC.) (CLOSED PIPING SYSTEM).
 - B. MAXIMUM 1-1/2" (40mm) NOMINAL DIAMETER POLYSTAR CT-WHITE (SDR 11) PP PLASTIC PIPE (MANUFACTURED BY ORION) (CLOSED PIPING SYSTEM).
3. MINIMUM 3/4" DEPTH HILTI FS-ONE MAX INTUMESCENT FIRESTOP SEALANT.
4. MINIMUM 5/8" DEPTH HILTI FS-ONE MAX INTUMESCENT FIRESTOP SEALANT.
5. MINIMUM 1/4" BEAD HILTI FS-ONE MAX INTUMESCENT FIRESTOP SEALANT APPLIED AT POINT CONTACT.

NOTES : 1. MAXIMUM DIAMETER OF OPENING = 2-1/2".
2. ANNULAR SPACE = MINIMUM 0", MAXIMUM 15/16".
3. CHASE WALL [NOT SHOWN, OPTIONAL] - THE THROUGH PENETRANT MAY BE ROUTED THROUGH A NON-RATED OR RATED GYPSUM CHASE WALL.



HILTI, Inc.
Tulsa, Oklahoma USA (800) 879-8000

Sheet	1 of 1
Scale	3/16" = 1"
Date	Apr. 06, 2015

Drawing No.

**FC
2429a**

Saving Lives through Innovation and Education