

UL SYSTEM NO. W-L-2602

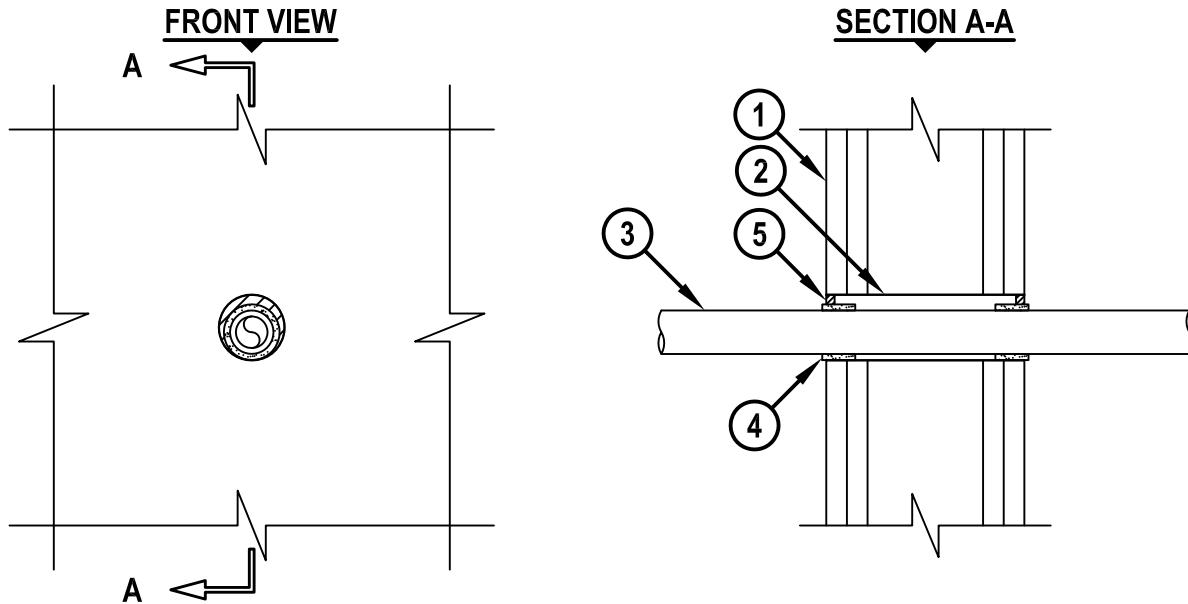
## PLASTIC PIPE THROUGH GYPSUM WALL ASSEMBLY

F-RATING = 1-HR. OR 2-HR.

T-RATING = 0-HR. OR 1 3/4-HR.

L-RATING AT AMBIENT = 1.2 CFM / SQ FT

L-RATING AT 400°F = LESS THAN 1 CFM / SQ FT



WL2602a.040715

1. GYPSUM WALL ASSEMBLY (UL CLASSIFIED U300, U400, V400, OR W400 SERIES) (1-HR. OR 2-HR. FIRE-RATING) (2-HR. SHOWN) TO INCLUDE THE FOLLOWING CONSTRUCTION FEATURES :
  - A. [NOT SHOWN] WOOD STUDS TO CONSIST OF NOMINAL 2" x 4" LUMBER (SPACED MAXIMUM 16" OC). STEEL STUDS TO BE MINIMUM 3-1/2" WIDE (SPACED MAXIMUM 24" OC).
  - B. NOMINAL 5/8" THICK GYPSUM WALLBOARD. TYPE, NUMBER OF LAYERS, AND SHEET ORIENTATION AS SPECIFIED IN THE INDIVIDUAL UL DESIGN.
2. SHEET METAL SLEEVE (MIN. 30 GA.) HAVING A MINIMUM 1" LAP ALONG THE LONGITUDINAL SEAM. LENGTH OF SLEEVE TO BE SAME AS WALL.
3. MAXIMUM 1" NOMINAL DIAMETER PP PLASTIC PIPE (SCHEDULE 80) (CLOSED PIPING SYSTEM).
4. HILTI CP 648E WRAP STRIP (NOMINAL 3/16" THICK x 1" WIDE) CONTINUOUSLY WRAPPED AROUND THE OUTER CIRCUMFERENCE OF THE PIPE, COVERING ONE TIME, WITH ENDS BUTTED AND HELD IN PLACE WITH TAPE. WRAP STRIP TO EXTEND 1/8" BEYOND THE WALL SURFACE OF EACH SIDE OF WALL.
5. MINIMUM 1/4" DEPTH HILTI FS-ONE MAX OR FS-ONE INTUMESCENT FIRESTOP SEALANT.

NOTES : 1. DIAMETER OF OPENING TO BE 3/4" LARGER THAN OUTSIDE DIAMETER OF PENETRANT.  
2. ANNULAR SPACE = MINIMUM 3/16", MAXIMUM 1/2".  
3. FOR L-RATING, SEALANT TO EXTEND TO PERIPHERY OF WALL AND COVER THE INTERFACE OF SLEEVE TO WALL.



HILTI, Inc.  
Tulsa, Oklahoma USA (800) 879-8000

Sheet	1 of 1
Scale	11/64" = 1"
Date	Apr. 07, 2015

Drawing No.

**WL**  
**2602a**

*Saving Lives through Innovation and Education*