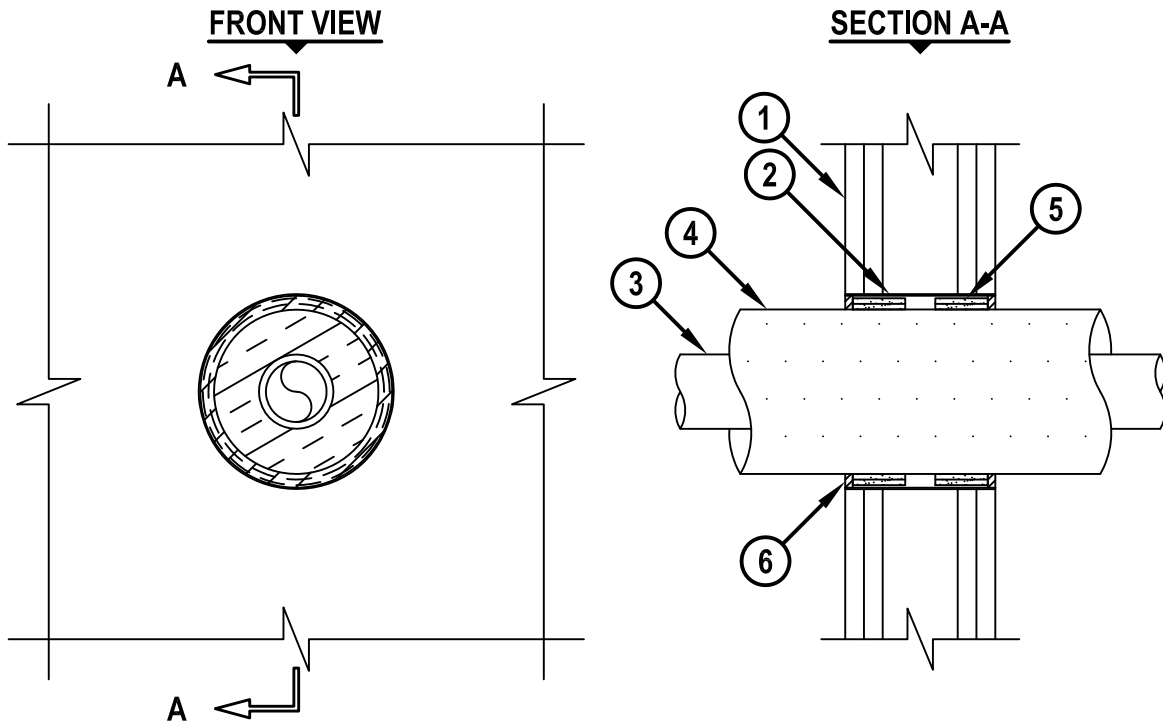


UL SYSTEM NO. W-L-5303

INSULATED PLASTIC PIPE THROUGH GYPSUM WALL ASSEMBLY

F-RATING = 1-HR. OR 2-HR.
T-RATING = 0-HR., 1-HR., OR 2-HR.

WL5303a.040615



1. GYPSUM WALL ASSEMBLY (UL CLASSIFIED U300, U400, V400, OR W400 SERIES) (1-HR. OR 2-HR. FIRE-RATING) (2-HR. SHOWN) TO INCLUDE THE FOLLOWING CONSTRUCTION FEATURES :
 - A. [NOT SHOWN] WOOD STUDS TO CONSIST OF NOMINAL 2" x 4" LUMBER (SPACED MAXIMUM 16" OC). STEEL STUDS TO BE MINIMUM 2-1/2" WIDE (SPACED MAXIMUM 24" OC).
 - B. NOMINAL 5/8" THICK GYPSUM WALLBOARD. TYPE, NUMBER OF LAYERS, AND SHEET ORIENTATION AS SPECIFIED IN THE INDIVIDUAL UL DESIGN.
2. SHEET METAL SLEEVE (MIN. 30 GA.) HAVING A 2" LAP ALONG LONGITUDINAL SEAM. SLEEVE INSTALLED FLUSH WITH BOTH WALL SURFACES.
3. PENETRATING ITEM TO BE ONE OF THE FOLLOWING :
 - A. MAXIMUM 2" (63mm) NOMINAL DIAMETER FUSIOTHERM (SDR 11) PP PLASTIC PIPE (MANUFACTURED BY AQUATHERM, INC.) (CLOSED PIPING SYSTEM).
 - B. MAXIMUM 2" (63mm) NOMINAL DIAMETER POLYSTAR CT-WHITE (SDR 11) PP PLASTIC PIPE (MANUFACTURED BY ORION) (CLOSED PIPING SYSTEM).
4. NOMINAL 1/2" TO 1-1/2" THICK GLASS-FIBER PIPE INSULATION.
5. HILTI CP 648E WRAP STRIP (NOMINAL 3/16" THICK x 1-3/4" WIDE) CONTINUOUSLY WRAPPED AROUND THE OUTER CIRCUMFERENCE OF THE INSULATED PIPE, COVERING TWO, WITH ENDS BUTTED AND HELD IN PLACE WITH TAPE. WRAP STRIPS RECESSED 1/4" FROM THE ENDS OF THE SLEEVE.
6. MINIMUM 1/4" DEPTH HILTI FS-ONE MAX INTUMESCENT FIRESTOP SEALANT.

NOTES : 1. MAXIMUM DIAMETER OF OPENING = 6-1/2".
2. ANNULAR SPACE = MINIMUM 3/8", MAXIMUM 1-1/8".



HILTI, Inc.
Tulsa, Oklahoma USA (800) 879-8000

Sheet	1 of 1
Scale	5/32" = 1"
Date	Apr. 06, 2015

Drawing No.
WL
5303a