



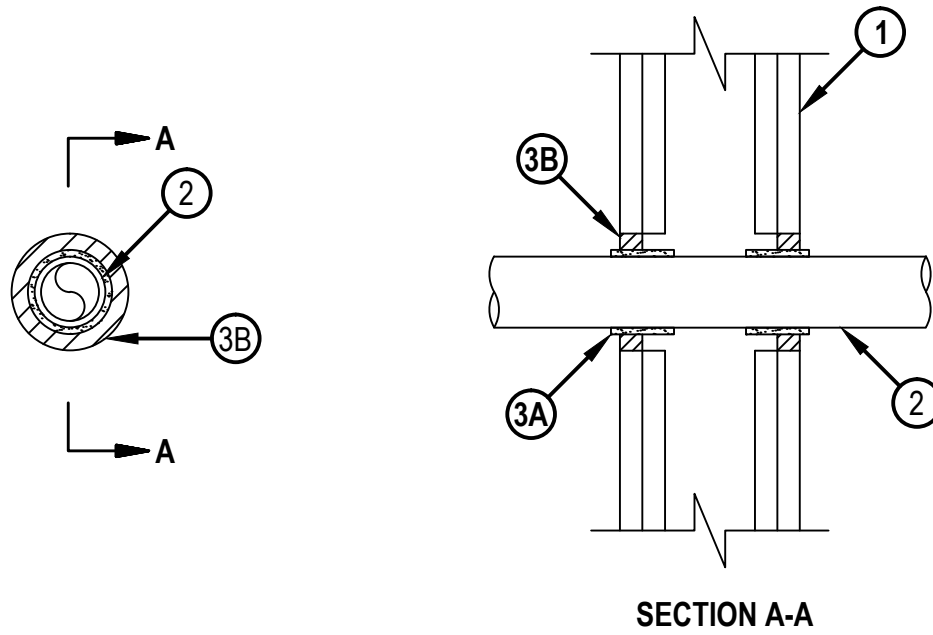
Classified by  
Underwriters Laboratories, Inc.  
to UL 1479

## System No. W-L-2604

F Rating — 1 and 2 Hr (See Item 1)

T Rating - 1 and 2 Hr (See Item 1)

WL2604



1. Wall Assembly — The 1 or 2 hr fire rated gypsum board/stud wall assembly shall be constructed of the materials and in the manner specified in the individual U300, U400, V400, or W400 Series Wall and Partition Designs in the UL Fire Resistance Directory and shall include the following construction features:

- A. Studs — Wall framing shall consist of either wood studs or channel shaped steel studs. Wood studs to consist of 2 by 4 in. (51 by 102 mm) lumber spaced 16 in. (406 mm) OC. Steel studs to be min 2-1/2 in. (64 mm) wide, fabricated from min 25 MSG galvanized steel, spaced max 24 in. (610 mm) OC.
- B. Gypsum Board\* — One or two layers of gypsum board, as specified in the individual Wall and Partition Design. Max diam of opening is 3-1/4 in. (83 mm).

The hourly F and T Ratings of the firestop system are equal to the hourly fire rating of the wall assembly in which it is installed.



**Hilti Firestop Systems**

Reproduced by HILTI, Inc. Courtesy of  
Underwriters Laboratories, Inc.  
February 20, 2015

2. Through Penetrants — One nonmetallic pipe to be installed concentrically within the firestop system. The annular space between the pipe and the periphery of the opening shall be a nom 5/8 in. (16 mm). Pipe to be rigidly supported on both sides of the floor or wall assembly. The following type and sizes of nonmetallic pipe may be used:
  - A. Polypropylene (PP) Pipe — Nom 1-1/2 in. (50 mm OD) diam (or smaller) Aquatherm Fusiotherm SDR 7.4 PP pipe for use in closed (process or supply) piping systems.
  - B. Polypropylene (PP) Pipe — Nom 1-1/2 in. (50 mm OD) diam (or smaller) Orion Polystar™ CT-White SDR 7.4 pipe for use in closed (process or supply) piping systems.
3. Firestop System — The firestop system shall consist of the following:
  - A. Fill, Void or Cavity Material\* Wrap Strip — Nom 1-3/4 in. (44 mm) wide by 3/16 in. (5 mm) thick wrap strip. The wrap strip is continuously wrapped around the outer circumference of the pipe once with ends butted, held in place with integral fastening tape and slid into the annular space on both sides of wall assembly such that the exposed edges of the wrap strips extend 1/4 in. (6 mm) beyond the wall surfaces.  
HILTI CONSTRUCTION CHEMICALS, DIV OF HILTI INC — CP 648E
  - B. Fill, Void or Cavity Material\* — Sealant — Min 5/8 in. (16 mm) thickness of fill material applied within the annulus between the wrap strip and periphery of opening, flush with both surfaces of wall assembly.  
HILTI CONSTRUCTION CHEMICALS, DIV OF HILTI INC — FS-ONE MAX Intumescent Sealant

\* Indicates such products shall bear the UL or cUL Certification Mark for jurisdictions employing the UL or cUL Certification (such as Canada), respectively.

