

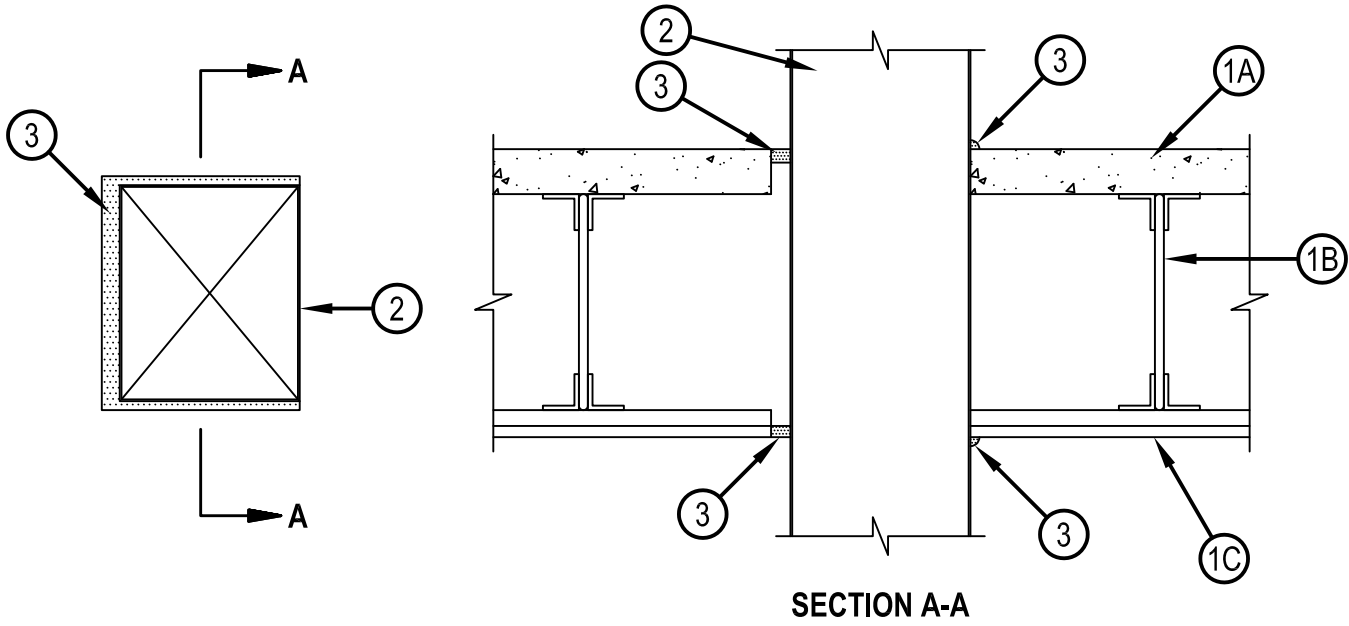


Classified by
Underwriters Laboratories, Inc.
to UL 1479 and CAN/ULC-S115

System No. F-E-7008

ANSI/UL1479 (ASTM E814)	CAN/ULC S115
F Rating — 1 Hr	F Rating — 1 Hr
T Rating — 1/4 Hr	FT Rating — 1/4 Hr
	FH Rating — 1 Hr
	FTH Rating — 1/4 Hr

FE 7008



- Floor-Ceiling Assembly — The 1 hr fire rated concrete and steel joist Floor-Ceiling assembly shall be constructed of the materials and in the manner described in the individual G500 Series Design in the UL Fire Resistance Directory, as summarized below:
 - Flooring — Normal or lightweight concrete as specified in the individual G500-Series Design. Max area of opening shall be 143 in.2 (923 cm²) with a max dimension of 13 in. (330mm).
 - Joists — Steel joists or Structural Steel Members* as specified in the individual G500-Series Design.
 - Gypsum Board* — Min 5/8 in. (16 mm) thick, screw-attached to furring channels as specified in the individual G500-Series Design. Max area of opening shall be 143 in.2 (923 cm²) with a max dimension of 13 in. (330mm).
- Steel Duct — Max 12 by 10 in. (305 by 254 mm) 28 ga. (or heavier) galv steel duct to be installed either concentrically or eccentrically within the firestop system. The space between the steel duct and periphery of opening shall be min 0 in. (point contact) to max 1 in. (25 mm). Steel duct to be rigidly supported on both sides of the floor-ceiling assembly.
 - Coated Duct* — As an alternate to Item 2, nom 12 by 10 in. (305 by 254 mm) (or smaller) steel air duct. Duct supplied coated with BW11 coating material. One duct to be installed within the firestop system with an annular space of min 0 in. (point contact) to max 1 in. (25 mm). Duct sections shall be assembled using bolted flanges or SMACNA approved Transverse Joint Reinforcements. Duct to be rigidly supported on both sides of the floor assembly.

FIRESPRAY INTERNATIONAL LTD — FLAMEBAR BW11 FIRE RATED DUCTWORK
- Fill, Void or Cavity Materials* - Sealant — Min 3/4 in. (19 mm) thickness of sealant applied within the annulus flush with the top surface of the floor. Min 5/8 in. (16 mm) thickness of sealant applied within the annulus flush with the bottom surface of gypsum board ceiling.

HILTI CONSTRUCTION CHEMICALS, DIV OF HILTI INC — CP 606 Flexible Firestop Sealant or FS-One Sealant or FS-ONE MAX Intumescent Sealant

* Indicates such products shall bear the UL or cUL Certification Mark for jurisdictions employing the UL or cUL Certification (such as Canada), respectively.



Hilti Firestop Systems

Reproduced by HILTI, Inc. Courtesy of
Underwriters Laboratories, Inc.
October 27, 2017