

METAL PIPE THROUGH CONCRETE WALL OR CONCRETE BLOCK WALL ASSEMBLY

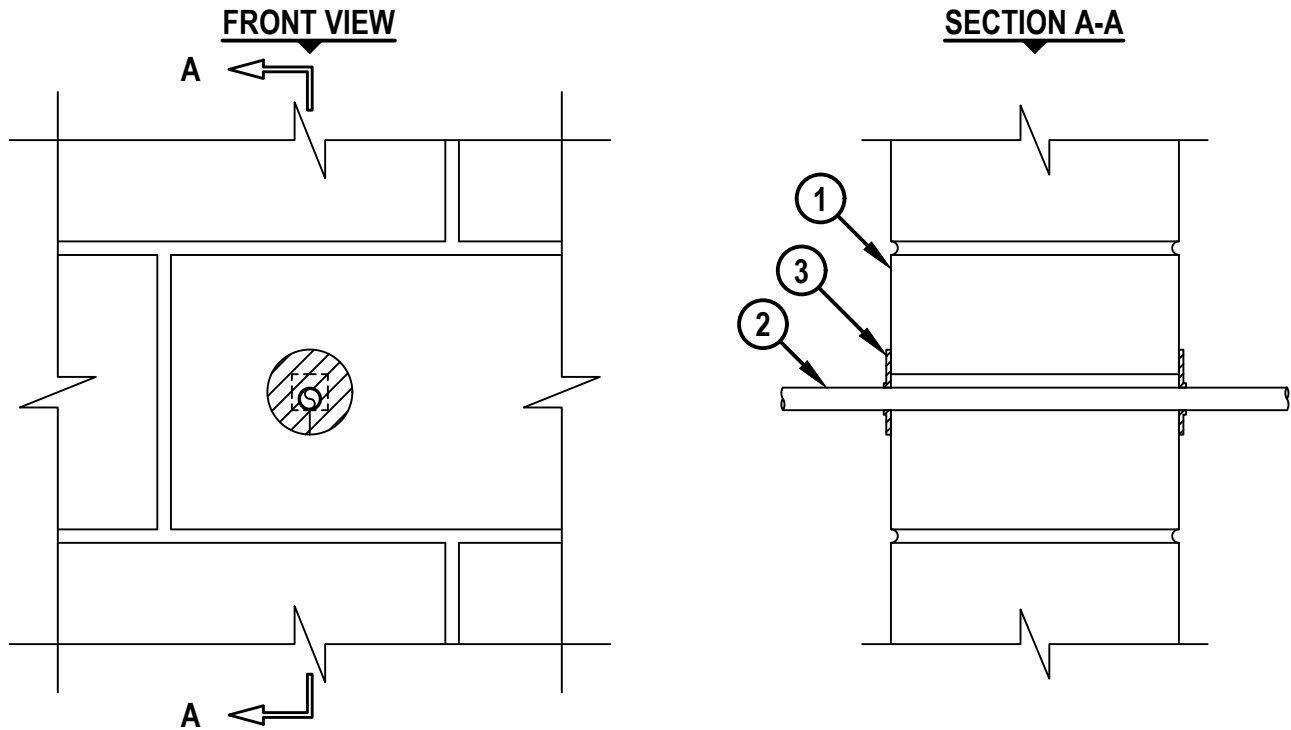
F-RATING = 2-HR.

T-RATING = 2-HR.

L-RATING AT AMBIENT = LESS THAN 1 CFM / OPENING

L-RATING AT 400°F = LESS THAN 1 CFM / OPENING

WJ1248c.082820



1. CONCRETE WALL ASSEMBLY (2-HR. FIRE-RATING) :
 - A. LIGHTWEIGHT OR NORMAL WEIGHT CONCRETE WALL (MINIMUM 6" THICK).
 - B. ANY UL/cUL CLASSIFIED CONCRETE BLOCK WALL.
2. PENETRATING ITEM TO BE ONE OF THE FOLLOWING :
 - A. MAXIMUM 3/4" NOMINAL DIAMETER STEEL PIPE (SCH 40 OR HEAVIER).
 - B. MAXIMUM 3/4" NOMINAL DIAMETER CAST OR DUCTILE IRON PIPE.
 - C. MAXIMUM 1/2" NOMINAL DIAMETER COPPER PIPE OR TUBING (TYPE L AND TYPE K OR HEAVIER).
 - D. MAXIMUM 3/4" NOMINAL DIAMETER RIGID OR FLEXIBLE STEEL CONDUIT.
 - E. MAXIMUM 3/4" NOMINAL DIAMETER EMT.
3. HILTI CFS-D 1" FIRESTOP PUTTY DISC PRESSED FIRMLY AROUND THE PIPE LAPPING NOMINAL 5mm ONTO PIPE COMPLETELY COVERING OPENING AND FIRMLY PRESSED TO LAP ONTO THE WALL. DISC SEAM TO BE FIRMLY PRESSED AND SEALED TIGHT.

NOTES: 1. OPENING MAY BE ROUND, RECTANGULAR, OR IRREGULAR WITH A MAXIMUM DIAMETER OR DIMENSION OF 1", OR ROUND WITH A MAXIMUM DIAMETER OF 1-1/8".
 2. ANNULAR SPACE BETWEEN PENETRANT AND PERIPHERY OF OPENING = MINIMUM 0".



HILTI, Inc.
 Plano, Texas USA (800) 879-8000

Sheet	1 of 1
Scale	3/16" = 1"
Date	Aug. 28, 2020

Drawing No.
WJ
1248c