



Classified by
Underwriters Laboratories, Inc.
to UL 1479

System No. F-C-2432

ANSI/UL1479 (ASTM E814)

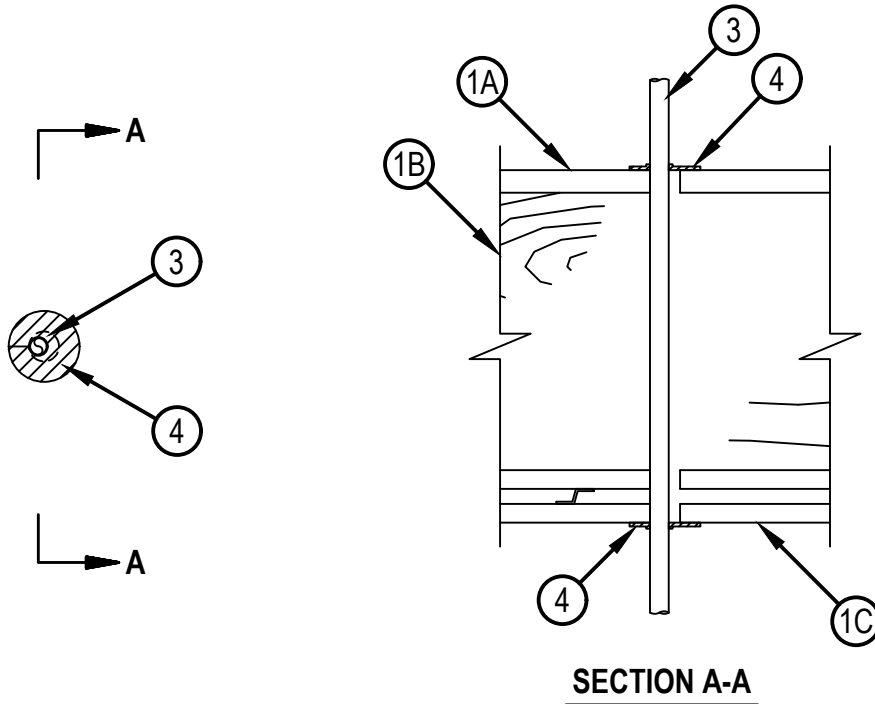
F Ratings — 1 and 2 Hr (See Item 1)

T Ratings — 1 and 2 Hr (See Item 1)

L Rating at Ambient — Less than 1 CFM/Opening

L Rating at 400 F — Less than 1 CFM/Opening

FC 2432



Reproduced by HILTI, Inc. Courtesy of
Underwriters Laboratories, Inc.
April 28, 2020

1. Floor-Ceiling Assembly — The 1 or 2 hr fire-rated solid or trussed lumber joist Floor-Ceiling assembly shall be constructed of the materials and in the manner specified in the individual L500 Series Floor-Ceiling Designs in the UL Fire Resistance Directory, as summarized below:
 - A. Flooring System — Lumber or plywood subfloor with finish floor of lumber, plywood or Floor Topping Mixture* as specified in the individual Floor-Ceiling Design. Opening may be round, rectangular or irregular with a max diam or dimension of 1 in. (25 mm).
 - B. Joists — Nom 10 in. (254 mm) deep (or deeper) lumber and steel joist, trusses or Structural Wood Members* with bridging as required and with ends firestopped.
 - C. Gypsum Board* — Nom 4 ft (122 cm) wide by 5/8 in. (16 mm) thick. Gypsum board direct-attached to joists or screw-attached to furring channels as specified in the individual Floor-Ceiling Design. Opening may be round, rectangular or irregular with a max diam or dimension of 1 in. (25 mm).

The F, FT, FH and FTH Rating of the firestop system is equal to the rating of the floor-ceiling assembly.

2. Chase Wall — (Optional. Not Shown) — The through penetrants (Item 3) may be routed through a fire-rated or non-rated single, double or staggered wood stud/gypsum board chase wall constructed of the materials and Partition design in the UL Fire Resistance Directory and shall include the following construction features:
 - A. Studs — Nom 2 by 4 in. (51 by 102 mm), 2 by 6 in. (51 by 152 mm) or 2 by 8 in. (51 by 203 mm) lumber studs.
 - B. Sole Plate — Nom 2 by 4 in. (51 by 102 mm), 2 by 6 in. (51 by 152 mm) or 2 by 8 in. (51 by 203 mm) lumber plates. Opening to be centered in sole plate. Opening may be round, rectangular or irregular with a max diam or dimension of 1 in. (25 mm).
 - C. Top Plate — The double top plate shall consist of two nom 2 by 4 in. (51 by 102 mm), 2 by 6 in. (51 by 152 mm) or 2 by 8 in. (51 by 203 mm) lumber. Opening to be centered in top plate. Opening may be round, rectangular or irregular with a max diam or dimension of 1 in. (25 mm).
 - D. Gypsum Board* — Thickness, type, number of layers and fasteners shall be as specified in individual Wall and Partition Design.
3. Through Penetrant* — Max one nom 1/2 in. (12.7 mm) diam (or smaller) Durathane/Riser micro duct with min 0.057 in. (1.45 mm) wall thickness for use in closed (process or supply) piping systems. Microduct to be installed concentrically or eccentrically within the firestop system. The annular space between the microduct and the periphery of the opening shall be min 0 in. (point contact). Microduct to be rigidly supported on both sides of wall. See Optical Fiber/Communications/Signaling/Coaxial Cable Raceway (QAZM) category for certification.

A-D-Technologies — Dura-Line Riser Rated MicroDuct
4. Fill, Void or Cavity Material* — Nom 60 mm diam by 3 mm thick putty disc with one seam at radius. Paper-backer of disc to be removed and disc firmly pressed around the penetrant lapping nom 5 mm onto penetrant to completely cover opening and firmly pressed to lap onto the floor and ceiling (or plates) around periphery of opening. Disc seam to be firmly pressed and sealed tight, Disc to be installed at both sides of opening in floor-ceiling assembly.

HILTI CONSTRUCTION CHEMICALS, DIV OF HILTI INC — CFS-D 1" Firestop Putty Disc

* Indicates such products shall bear the UL or cUL Certification Mark for jurisdictions employing the UL or cUL Certification (such as Canada), respectively.