



Classified by  
Underwriters Laboratories, Inc.  
to UL 1479

## System No. W-L-2605

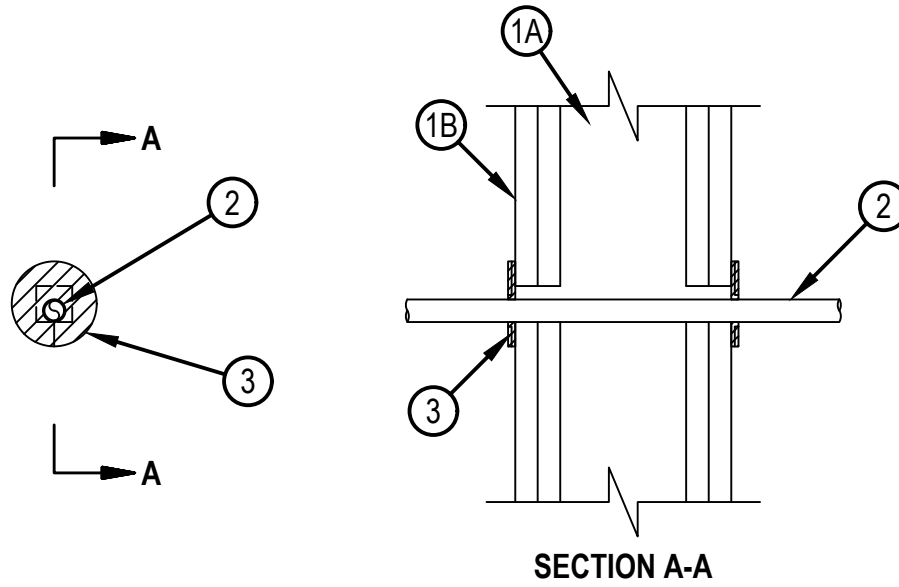
F Ratings — 1 and 2 Hr (See Item 1)

T Ratings — 1 and 2 Hr (See Item 1)

L Rating at Ambient — Less than 1 CFM/Opening

L Rating at 400 F — Less than 1 CFM/Opening

WL 2605



1. Wall Assembly — The 1 or 2 hr fire rated gypsum board/stud wall assembly shall be constructed of the materials and in the manner specified in the individual U300, U400, V400 or W400 Series Wall and Partition Designs in the UL Fire Resistance Directory and shall include the following construction features:

A. Studs — Wall framing may consist of either wood studs or steel channel studs. Wood studs to consist of nom 2 in. (51 mm) by 4 in. (102 mm) lumber spaced 16 in. (406 mm) OC. Steel studs to be min 3-1/2 in. (89 mm) wide and spaced max 24 in. (610 mm) OC.

B. Gypsum Board\* — 5/8 in. (16 mm) thick, 4 ft (1219 cm) wide with square or tapered edges. The gypsum wallboard type, thickness, number of layers, fastener type and sheet orientation shall be as specified in the individual Wall and Partition Design. Opening may be round, rectangular or irregular with a max diam or dimension of 1 in. (25 mm).

The hourly F and T Ratings of the firestop system are equal to the hourly fire rating of the wall assembly in which it is installed.

2. Through Penetrants\* — One nonmetallic duct or tube to be installed either concentrically or eccentrically within the firestop system. The annular space between penetrant and the periphery of the opening shall be min 0 in. (point contact) to a max 1/2 in. (13 mm). The following types and sizes of nonmetallic pipes may be used:

A. Microduct\* — One nom 1/2 in. (12.7 mm) diam (or smaller) Durathane/Riser micro duct with min 0.057 in. (1.45 mm) wall thickness for use in closed (process or supply) piping systems. Microduct to be installed concentrically or eccentrically within the firestop system. The annular space between the microduct and the periphery of the opening shall be min 0 in. (point contact). Microduct to be rigidly supported on both sides of wall. See Optical Fiber/Communications/Signaling/Coaxial Cable Raceway (QAZM) category for certification.

A-D-Technologies — Dura-Line Riser Rated MicroDuct

B. PEX Tubing — One nom 3/4 in. (19 mm) diam (or smaller) SDR 9 PEX tubing for use in closed (process or supply) piping systems. Tubing to be rigidly supported on both sides of wall.

3. Fill, Void or Cavity Material\* — Nom 60 mm diam by 3 mm thick putty disc with one seam at radius. Paper-backer of disc to be removed and disc firmly pressed around the penetrant lapping nom 5 mm onto penetrant to completely cover opening and firmly pressed to lap onto the wall around periphery of opening. Disc seam to be firmly pressed and sealed tight, Disc to be installed at both surfaces of wall.

HILTI CONSTRUCTION CHEMICALS, DIV OF HILTI INC — CFS-D 1" Firestop Putty Disc

\* Indicates such products shall bear the UL or cUL Certification Mark for jurisdictions employing the UL or cUL Certification (such as Canada), respectively.



Hilti Firestop Systems

Reproduced by HILTI, Inc. Courtesy of  
Underwriters Laboratories, Inc.  
April 29, 2020