



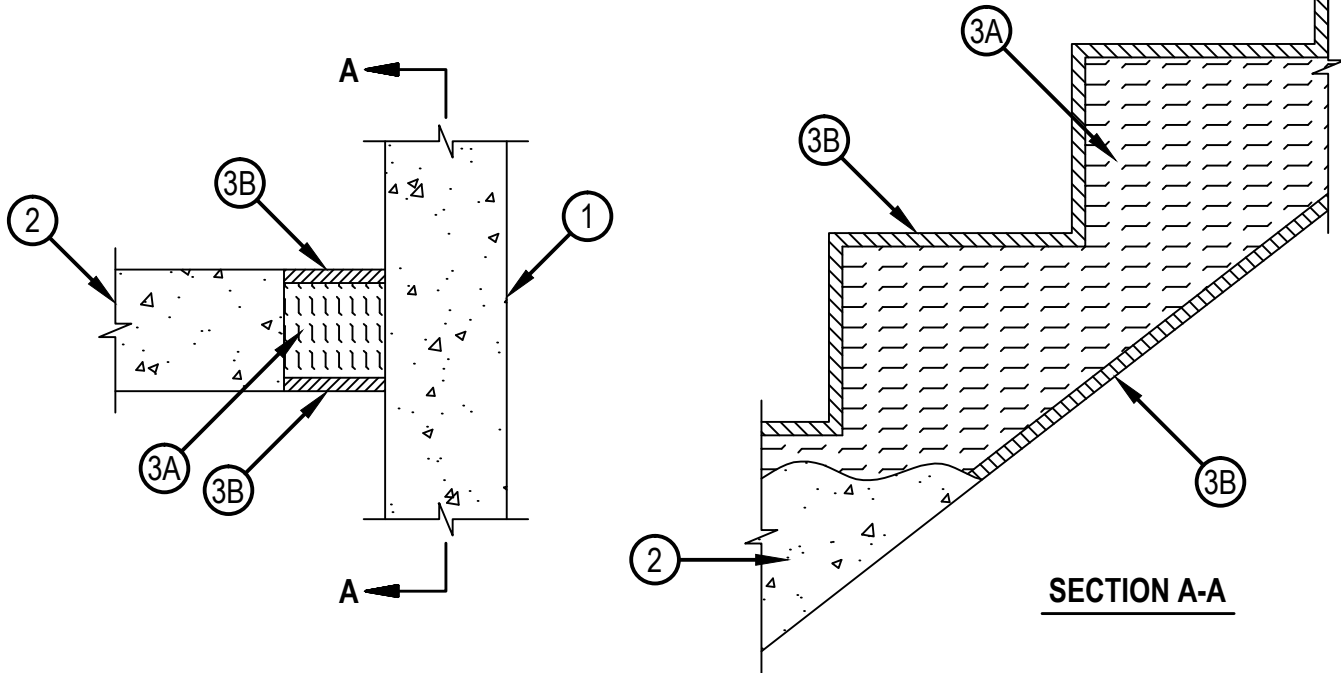
Classified by
Underwriters Laboratories, Inc.
to UL 2079 and CAN/ULC-S115

FW-D-1043

Assembly Rating - 2 Hr
Nominal Joint Width - 3-3/4"

Class II Movement Capabilities - 7% Compression Or Extension

FW-D-1043



1. Wall Assembly — Min 4-1/2 in. thick reinforced lightweight or normal weight (100-150 pcf) structural concrete. Wall may also be constructed of any UL Classified Concrete Blocks*.
See Concrete Blocks (CAZT) category in the Fire Resistance Directory for names of manufacturers.
2. Stair Assembly — Min 4-1/2 in. thick reinforced lightweight or normal weight (100-150 pcf) structural concrete.
3. Joint System Max separation between edge of stair assembly and face of wall (at time of installation of joint system) is 3-3/4 in. The joint system is designed to accommodate a max 7 percent horizontal compression or extension from its installed width. The joint system shall consist of the following:
 - A. Forming Material — Min 4 pcf mineral wool batt insulation installed in joint opening as a permanent form. Pieces of batt cut to min width of 3-1/2 in. and installed edge-first into joint opening, parallel with joint direction, such that batt sections are compressed min 42 percent in thickness and that the compressed batt sections are recessed 1/2 in. from both surfaces of the stair assembly as required to accommodate the required thickness of fill material. Adjoining lengths of batt to be tightly-butted with butted seams spaced min 24 in. apart along the length of the joint.
FIBREX INSULATIONS INC — FBX Safing Insulation
 - B. Fill, Void or Cavity Material* — Sealant Min 1/2 in. thickness of fill material applied within the joint, flush with top and bottom surfaces of stair assembly.
HILTI CONSTRUCTION CHEMICALS, DIV OF HILTI INC — CP606 Flexible Firestop Sealant

*Bearing the UL Classification Mark



Hilti Firestop Systems

Reproduced by HILTI, Inc. Courtesy of
Underwriters Laboratories, Inc.
April 15, 2009