

All loading and design criteria supplied by customer is assumed accurate. Only the stated Design Assumptions were considered, and must be verified by the responsible Engineer of Record (EOR). The basis of Hilti component and connection design is the published data in the current Hilti Technical Guide, including material and cross-section properties, allowable load values, factors of safety, methods of calculation, and limiting factors. The EOR must verify suitability for any specific application, and the capacity of the supportive structure to receive the shown configuration and associated reaction loads. Modification to components and/or design may alter performance and must be evaluated by the EOR.

PROJECT NAME:

HAC TYPICAL DETAILS

SERVICE REQUEST DESCRIPTION:

FACE OF SLAB APPLICATION

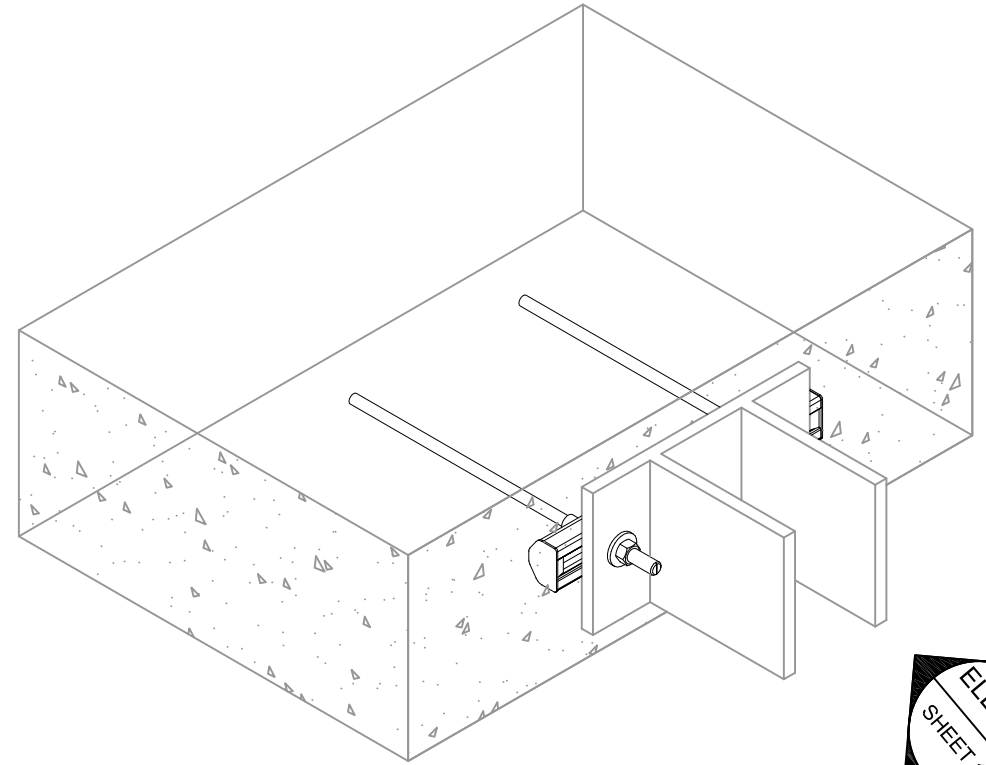
DESIGNED BY:	REVIEWED BY:
CAA	JAB

DRAWN BY:	ISSUE DATE:
JRS	25 JUL 13

REVISIONS:	
NO.	DESCRIPTION: DATE:
A	ORIGINAL ISSUE 25 JUL 13
C	REVISED TABLES AND TILT BLOCK 29 SEPT 15

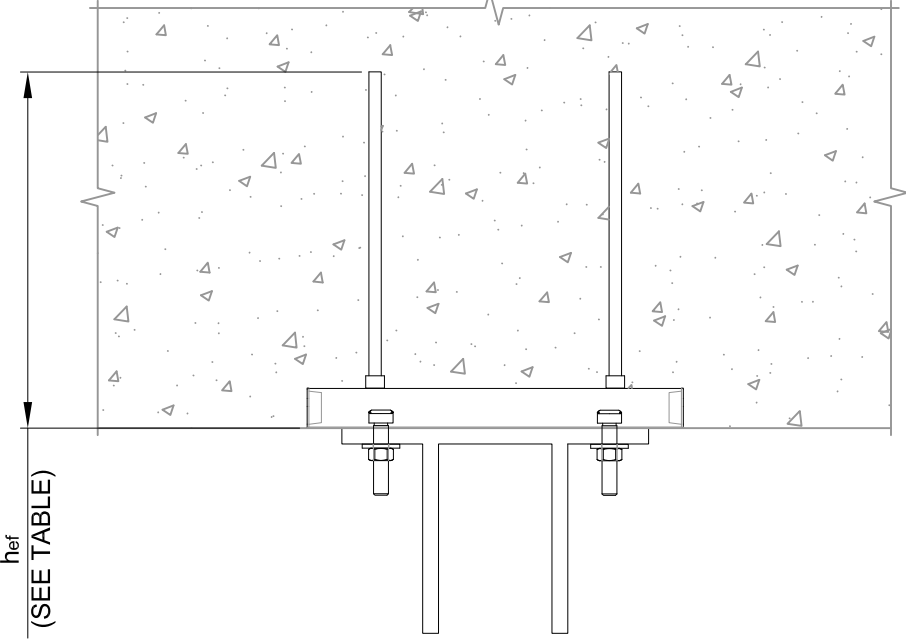
SERVICE REQUEST NUMBER:
13-228

DRAWING NUMBER:	SHEET:
04	1/1

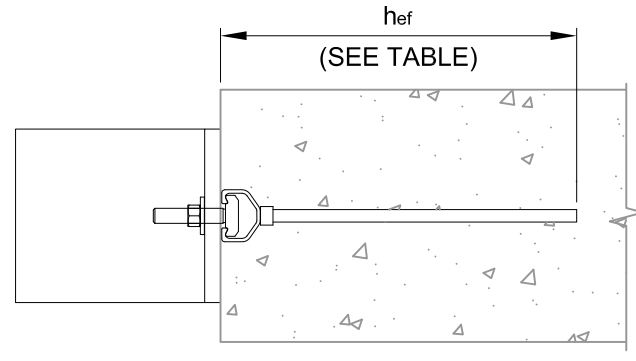


01 ISOMETRIC
N.T.S.

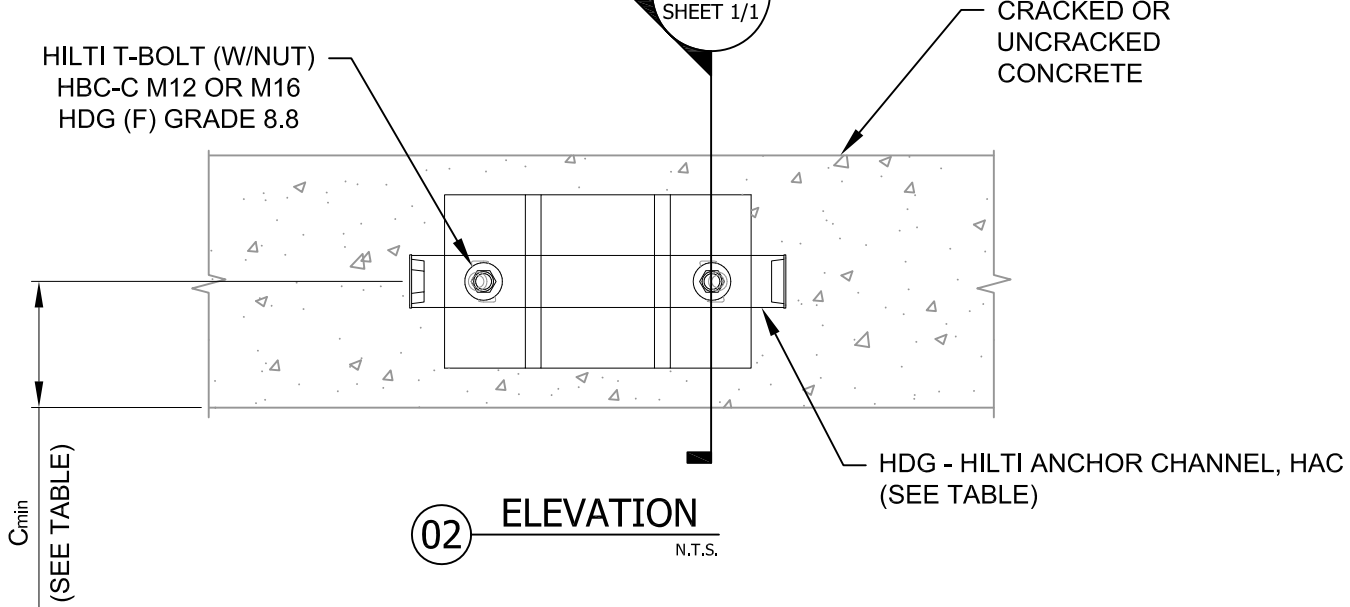
ELEV. 02
SHEET 1/1



04 PLAN VIEW
N.T.S.



03 SECTION
N.T.S.



02 ELEVATION
N.T.S.

NOTE(S):
*1. NOTCHED T-BOLT FOR PARALLEL SHEAR FORCE (SHEAR FORCE PARALLEL TO LENGTH OF CHANNEL) APPLICATIONS.
**2. THICKNESS MAY INCREASE DEPENDING ON THE LEVEL OF EXPOSURE TO WEATHER, CORROSIVE ENVIRONMENT, AND SPECIFIC PROJECT CRITERIA.

Anchor Channel Designation	Item No.	Chanel Length	h_{ef}	Min. Edge Distance c_{min} .	Rebar Diameter
Anchor channel HAC-50 372/300 F RFoS	2094582	300 mm (12")	372 mm (14.6")	75 mm (3")	Ø10 (#3)
Anchor channel HAC-50 372/350 F RFoS	2094583	350 mm (14")	372 mm (14.6")	75 mm (3")	Ø10 (#3)
Anchor channel HAC-50 372/450 F RFoS	2095595	450 mm (18")	372 mm (14.6")	75 mm (3")	Ø10 (#3)
Anchor channel HAC-60 470/300 F RFoS	2094584	300 mm (12")	470 mm (18.5")	100 mm (4")	Ø12 (#4)
Anchor channel HAC-60 470/350 F RFoS	2094585	350 mm (14")	470 mm (18.5")	100 mm (4")	Ø12 (#4)
Anchor channel HAC-60 470/450 F RFoS	2096772	450 mm (18")	470 mm (18.5")	100 mm (4")	Ø12 (#4)
Anchor channel HAC-70 584/300 F RFoS	2094586	300 mm (12")	584 mm (23")	100 mm (4")	Ø16 (#5)
Anchor channel HAC-70 584/350 F RFoS	2090324	350 mm (14")	584 mm (23")	100 mm (4")	Ø16 (#5)
Anchor channel HAC-70 584/450 F RFoS	2092921	450 mm (18")	584 mm (23")	100 mm (4")	Ø16 (#5)

T-Bolt Designation	Item No.	Thickness Fastened MAX.
HBC-C M12x60 8.8F	2095646	35 mm (1-3/8")
HBC-C M12x80 8.8F	2095647	55 mm (2-1/8")
HBC-C M12x100 8.8F	2019733	75 mm (2-15/16")
HBC-C M16x60 8.8F	2095650	30 mm (1-1/8")
HBC-C M16x80 8.8F	2095651	50 mm (1-7/8")
*HBC-C-N M16x60 8.8 F	2019736	30 mm (1-1/8")
*HBC-C-N M16x80 8.8 F	433479	50 mm (1-7/8")
*HBC-C-N M20x80 8.8 F	2019739	45 mm (1-3/4")