

All loading and design criteria supplied by customer is assumed accurate. Only the stated Design Assumptions were considered, and must be verified by the responsible Engineer of Record (EOR). The basis of Hilti component and connection design is the published data in the current Hilti Technical Guide, including material and cross-section properties, allowable load values, factors of safety, methods of calculation, and limiting factors. The EOR must verify suitability for any specific application, and the capacity of the supportive structure to receive the shown configuration and associated reaction loads. Modification to components and/or design may alter performance and must be evaluated by the EOR.

PROJECT NAME:

HAC TYPICAL DETAILS

SERVICE REQUEST DESCRIPTION:

TOP OF SLAB APPLICATION

DESIGNED BY: CAA
REVIEWED BY: JAB

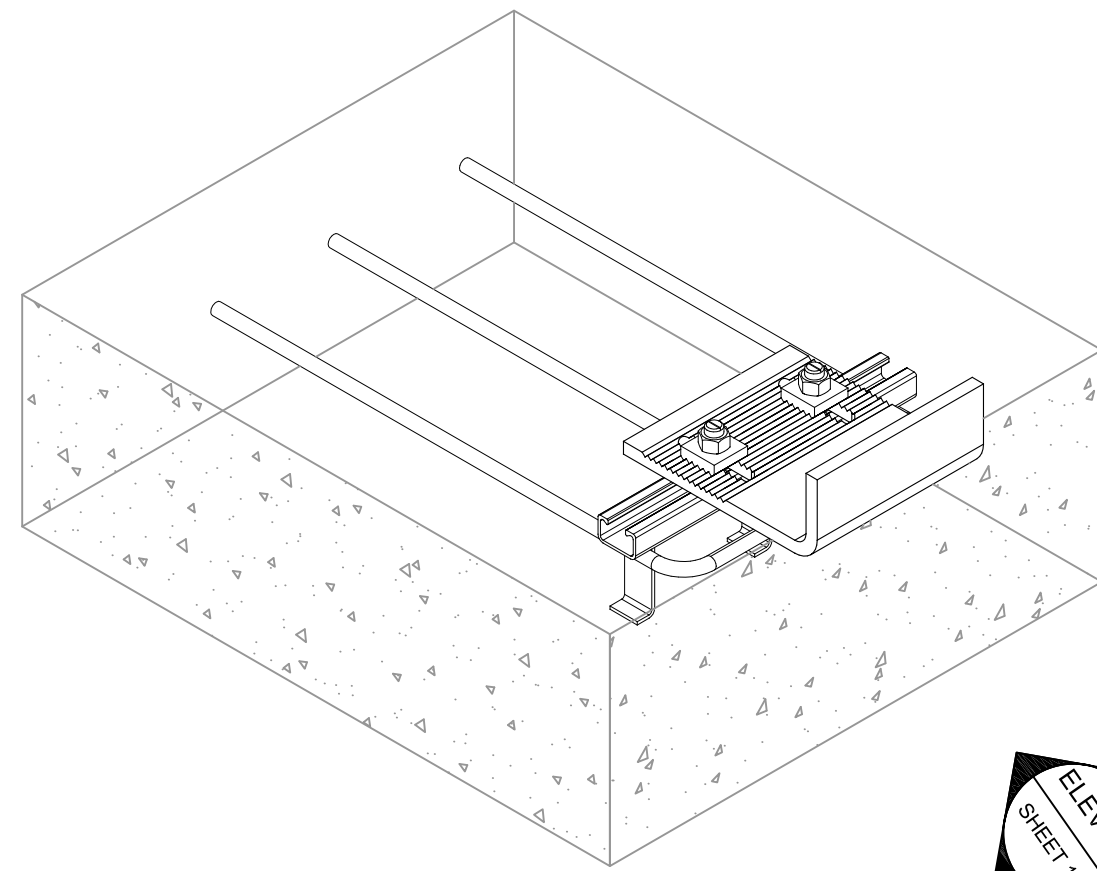
DRAWN BY: JRS
ISSUE DATE: 25 JUL 13

REVISIONS:

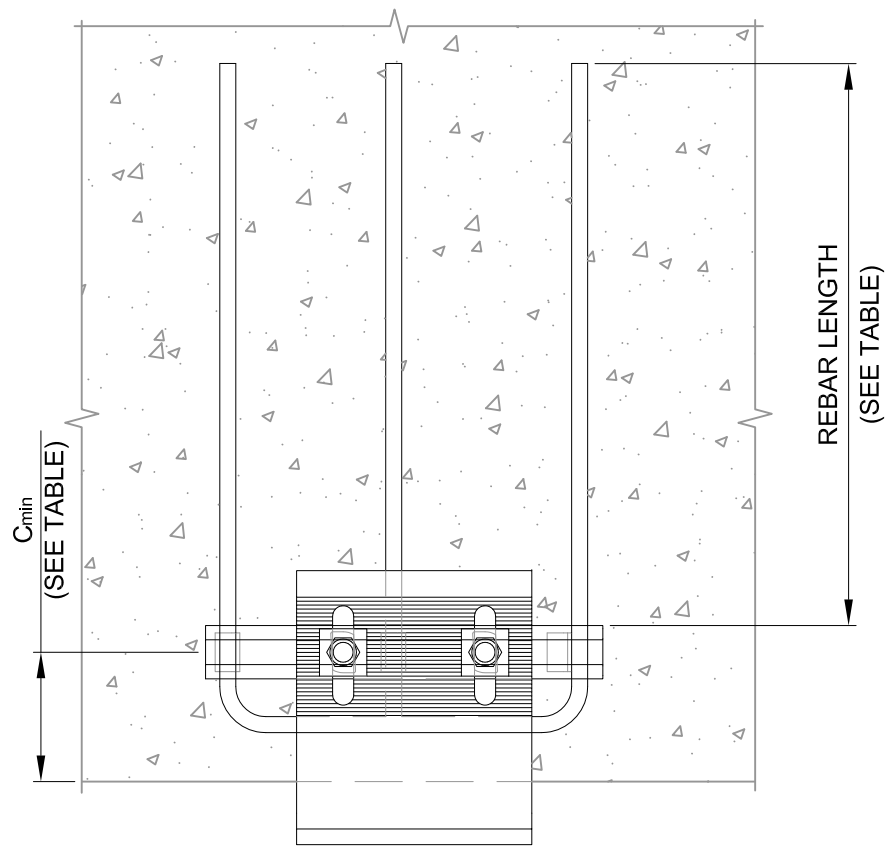
NO.	DESCRIPTION:	DATE:
A	ORIGINAL ISSUE	25 JUL 13
B	REVISED TABLES AND TILT BLOCK	29 SEPT 15

SERVICE REQUEST NUMBER:
13-228

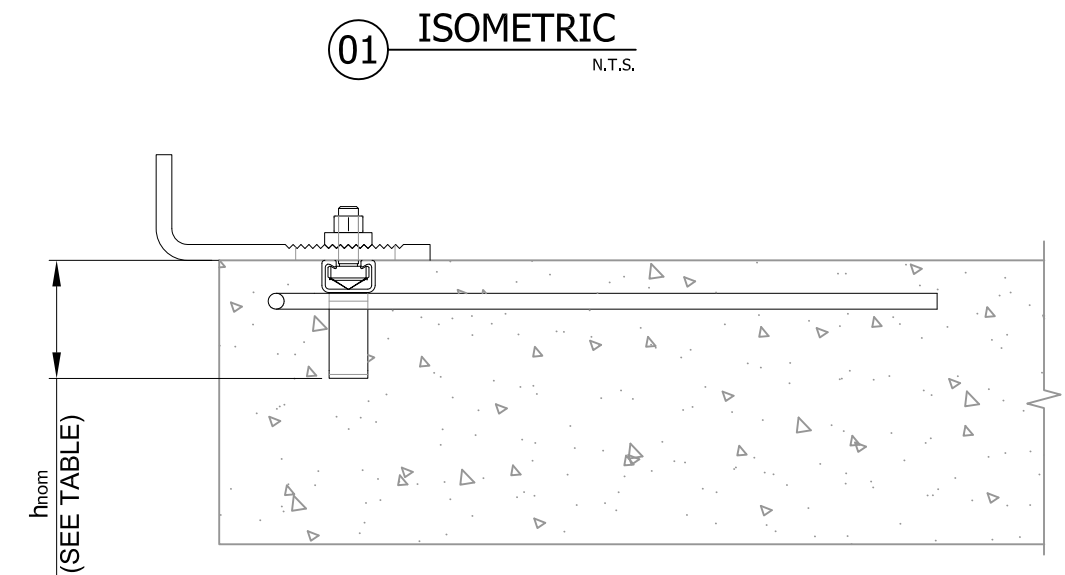
DRAWING NUMBER: **05** SHEET: **1/1**



ELEV. 02
SHEET 1/1

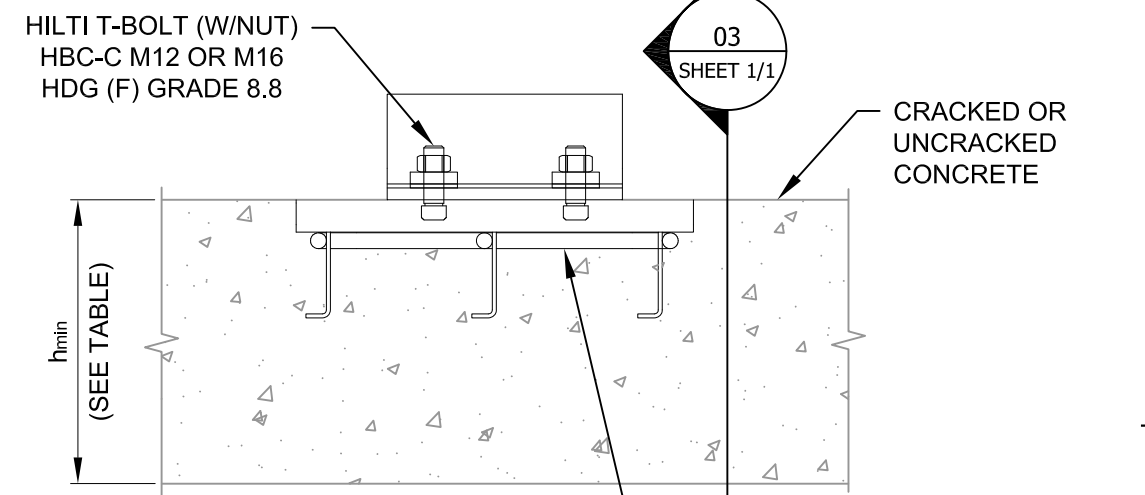


04 PLAN VIEW
N.T.S.



01 ISOMETRIC
N.T.S.

03 SECTION
N.T.S.



02 ELEVATION
N.T.S.

HILTI T-BOLT (W/NUT)
HBC-C M12 OR M16
HDG (F) GRADE 8.8

CRACKED OR UNCRACKED CONCRETE

HDC - HILTI ANCHOR CHANNEL, HAC
(SEE TABLE)

NOTE(S):
*1. NOTCHED T-BOLT FOR PARALLEL SHEAR FORCE (SHEAR FORCE PARALLEL TO LENGTH OF CHANNEL) APPLICATIONS.

Anchor Channel Designation	Item No.	Chanel Length	h_{nom}	Min. Edge Distance c_{min} .	Rebar Diameter	Rebar Length
Anchor channel HAC-50-W 102/300 F RToS	2093702	300 mm (12")	102mm (4")	100mm (4")	Ø12 (#4)	660 mm (26")
Anchor channel HAC-50-W 102/350 F RToS	2094595	350 mm (14")	102mm (4")	100mm (4")	Ø12 (#4)	660 mm (26")
Anchor channel HAC-50-W 102/450 F RToS	2095502	450 mm (18")	102mm (4")	100mm (4")	Ø12 (#4)	660 mm (26")
Anchor channel HAC-70-W 102/300 F RToS	2091782	300 mm (12")	102mm (4")	100mm (4")	Ø16 (#5)	890 mm (35")
Anchor channel HAC-70-W 102/350 F RToS	2091784	350 mm (14")	102mm (4")	100mm (4")	Ø16 (#5)	660 mm (26")
Anchor channel HAC-70-W 102/450 F RToS	2095503	450 mm (18")	102mm (4")	100mm (4")	Ø16 (#5)	660 mm (26")

T-Bolt Designation	Item No.	Thickness Fastened MAX.
HBC-C M12x60 8.8F	2095646	35 mm (1-3/8")
HBC-C M12x80 8.8F	2095647	55 mm (2-1/8")
HBC-C M12x100 8.8F	2019733	75 mm (2-15/16")
HBC-C M16x60 8.8F	2095650	30 mm (1-1/8")
HBC-C M16x80 8.8F	2095651	50 mm (1-7/8")
*HBC-C-N M16x60 8.8 F	2019736	30 mm (1-1/8")
*HBC-C-N M16x80 8.8 F	433479	50 mm (1-7/8")
*HBC-C-N M20x80 8.8 F	2019739	45 mm (1-3/4")