

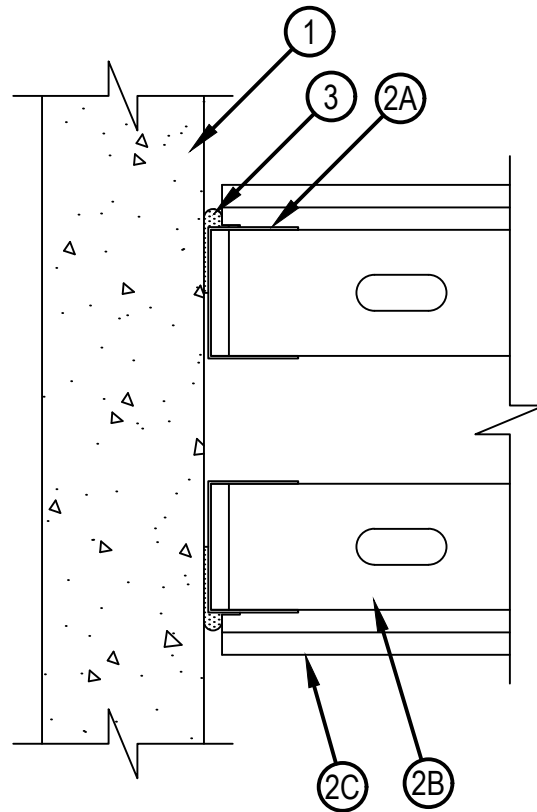


Classified by
Underwriters Laboratories, Inc.
to UL 2079 and CAN/ULC-S115

System No. WW-S-0075

WW-S-0075

ANSI/UL2079	CAN/ULC S115
Assembly Ratings — 1 and 2 Hr (See Items 1 and 2)	F Ratings — 1 and 2 Hr (See Items 1 and 2)
Joint Width - 3/4 In. Max	FT Ratings — 1 and 2 Hr (See Items 1 and 2)
L Rating at Ambient — Less than 1 CFM/Lin Ft	FH Ratings — 1 and 2 Hr (See Items 1 and 2)
L Rating at 400° F — Less than 1 CFM/Lin Ft	FTH Ratings — 1 and 2 Hr (See Items 1 and 2)
	Joint Width -19 mm Max
	L Rating at Ambient — Less than 1.55 L/s/lin m
	L Rating at 400° F — Less than 1.55 L/s/lin m



System No. WW-S-0075

WW-S-0075

1. Concrete Wall Assembly — Min 4-1/2 in. (114 mm) and 6 in. (152 mm) thick reinforced lightweight or normal weight (100-150 pcf or 1600-2400 kg/m³) structural concrete for 1 and 2 hr rated assemblies, respectively. Wall may also be constructed of any UL Classified Concrete Blocks*. See Concrete Blocks (CAZT) category in the Fire Resistance Directory for names of manufacturers.
2. Wall Assembly — The 1 or 2 hr fire rated gypsum board/stud chase (double stud) wall assembly shall be constructed of the materials and in the manner described in the individual U400, V400 or W400 Series Wall and Partition Design in the UL Fire Resistance Directory and shall include the following construction features:
 - A. Steel Runners — Runners of wall assembly shall consist of min No. 25 gauge galv steel channels sized to accommodate steel studs (Item 2B). Runners to be provided with 1-1/4 in. (32 mm) flanges. Runners secured with steel fasteners spaced 12 in. (305 mm) OC.
 - B. Studs — Steel studs to be min 2-1/2 in. (64 mm) wide. Studs cut 3/4 to 1 in. (19 to 25 mm) less in length than assembly height with bottom nesting in, resting on and fastened to floor runner with sheet metal screws. Stud spacing not to exceed 24 in. (610 mm) OC.
 - C. Gypsum Board* — Gypsum board installed to a min total thickness of 5/8 or 1-1/4 in. (16 or 32 mm) on each side of wall for a 1 or 2 hr rated wall, respectively. Wall to be constructed as specified in the individual U400, V400 or W400 Series Design in the UL Fire Resistance Directory, except that a max 3/4 in. (19 mm) gap shall be maintained between the edge of gypsum board and face of concrete wall.

The hourly fire rating of the joint system is equal to the hourly fire rating of the wall.
3. Fill, Void or Cavity Material* — Bottom Track Seal — Max separation between side of gypsum board and face of concrete wall assembly is 3/4 in. (19 mm). Factory supplied foam seal installed over the steel runners (Item 2A) prior to attachment concrete wall in accordance with the installation instructions.

HILTI CONSTRUCTION CHEMICALS, DIV OF HILTI INC — CFS-TTS 358, CFS-TTS 600, CFS-TTS R OS or CFS-TTS-OS

* Indicates such products shall bear the UL or cUL Certification Mark for jurisdictions employing the UL or cUL Certification (such as Canada), respectively.



Hilti Firestop Systems

Reproduced by HILTI, Inc. Courtesy of
Underwriters Laboratories, Inc.
March 8, 2023

Page: 2 of 2