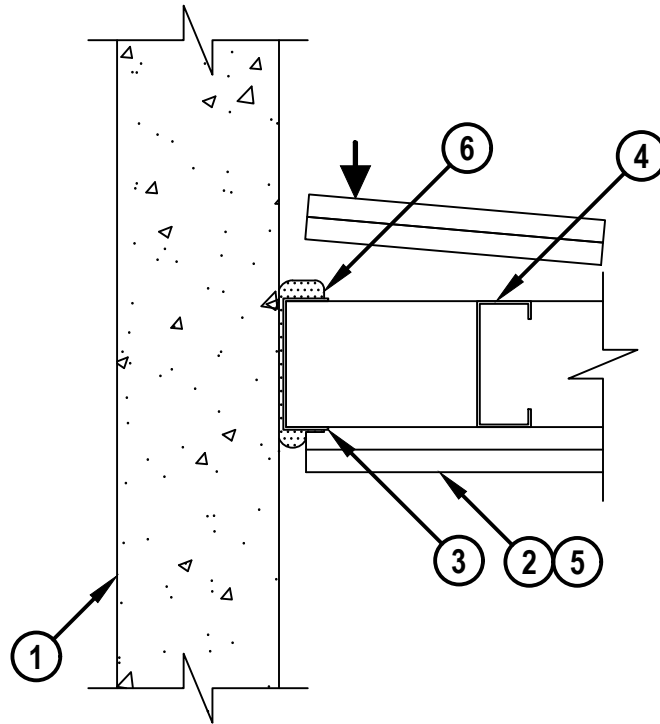


**WALL TO WALL JOINT : GYPSUM WALL ASSEMBLY TO CONCRETE WALL ASSEMBLY**

ASSEMBLY RATING = 1-HR. OR 2-HR.  
 L-RATING AT AMBIENT = LESS THAN 1 CFM / LIN FT  
 L-RATING AT 400°F = LESS THAN 1 CFM / LIN FT

WWS0074d.032323

**TOP VIEW**



**1. CONCRETE WALL ASSEMBLY :**

- A. LIGHTWEIGHT OR NORMAL WEIGHT CONCRETE WALL (MINIMUM 4-1/2" THICK) (1-HR FIRE-RATING).
- B. LIGHTWEIGHT OR NORMAL WEIGHT CONCRETE WALL (MINIMUM 6" THICK) (2-HR FIRE-RATING).
- C. ANY UL/cUL CLASSIFIED CONCRETE BLOCK WALL (1-HR OR 2-HR FIRE-RATING).

**2. GYPSUM WALL ASSEMBLY (UL/cUL CLASSIFIED U400, V400, OR W400 SERIES) (1-HR. OR 2-HR. FIRE-RATING) (2-HR. SHOWN).**

**3. STEEL RUNNER (MIN. 25 GA., FLANGE HEIGHT OF STEEL RUNNER SHALL BE MINIMUM 1-1/4") FASTENED TO CONCRETE WALL WITH MASONRY ANCHORS OR STEEL FASTENERS (SPACED MAX. 24" OC).**

**4. STEEL STUDS (MINIMUM 3-1/2" WIDE) CUT 3/4" TO 1" LESS IN LENGTH THAN ASSEMBLY HEIGHT WITH BOTTOM NESTING IN STEEL RUNNER WITHOUT ATTACHMENT.**

**5. 5/8" OR 1-1/4" THICKNESS GYPSUM WALLBOARD AS SPECIFIED IN THE INDIVIDUAL UL DESIGN.**

**6. HILTI CFS-TTS 358, CFS-TTS 600, CFS-TTS OS OR CFS-TTS R OS TOP TRACK SEAL INSTALLED UNDER STEEL RUNNER PRIOR TO ATTACHMENT TO CONCRETE WALL IN ACCORDANCE WITH THE ACCOMPANYING INSTALLATION INSTRUCTIONS.**

**NOTE : MAXIMUM WIDTH OF JOINT = 3/4".**



HILTI, Inc.  
 Plano, Texas USA (800) 879-8000

Sheet	1 of 1
Scale	3/16" = 1"
Date	Mar. 23, 2023

Drawing No.  
**WWS  
 0074d**