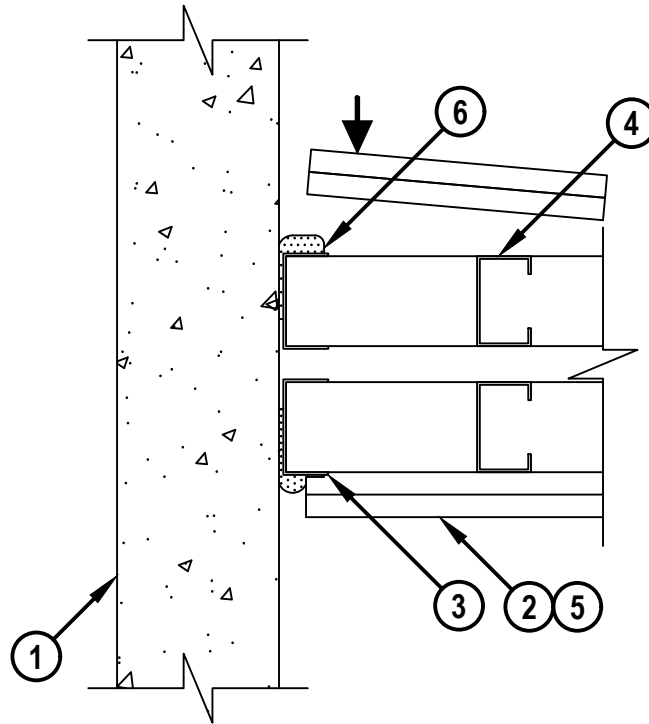


WALL TO WALL JOINT : GYPSUM CHASE WALL ASSEMBLY TO CONCRETE WALL ASSEMBLY

ASSEMBLY RATING = 1-HR. OR 2-HR.
 L-RATING AT AMBIENT = LESS THAN 1 CFM / LIN FT
 L-RATING AT 400°F = LESS THAN 1 CFM / LIN FT

WWS0075d.032323

TOP VIEW



1. CONCRETE WALL ASSEMBLY :

- A. LIGHTWEIGHT OR NORMAL WEIGHT CONCRETE WALL (MINIMUM 4-1/2" THICK) (1-HR FIRE-RATING).
- B. LIGHTWEIGHT OR NORMAL WEIGHT CONCRETE WALL (MINIMUM 6" THICK) (2-HR FIRE-RATING).
- C. ANY UL/cUL CLASSIFIED CONCRETE BLOCK WALL (1-HR OR 2-HR FIRE-RATING).

2. GYPSUM CHASE (DOUBLE STUD) WALL ASSEMBLY (UL/cUL CLASSIFIED U400, V400, OR W400 SERIES) (1-HR. OR 2-HR. FIRE-RATING) (2-HR. SHOWN).

3. STEEL RUNNER (MIN. 25 GA., FLANGE HEIGHT OF STEEL RUNNER SHALL BE MINIMUM 1-1/4") FASTENED TO CONCRETE WALL WITH MASONRY ANCHORS OR STEEL FASTENERS (SPACED MAX. 24" OC).

4. STEEL STUDS (MINIMUM 2-1/2" WIDE) CUT 1/2" TO 3/4" LESS IN LENGTH THAN ASSEMBLY HEIGHT WITH BOTTOM NESTING IN STEEL RUNNER WITHOUT ATTACHMENT.

5. 5/8" OR 1-1/4" THICKNESS GYPSUM WALLBOARD AS SPECIFIED IN THE INDIVIDUAL UL DESIGN.

6. HILTI CFS-TTS 358, CFS-TTS 600, CFS-TTS OS OR CFS-TTS R OS TOP TRACK SEAL INSTALLED UNDER STEEL RUNNER PRIOR TO ATTACHMENT TO CONCRETE WALL IN ACCORDANCE WITH THE ACCOMPANYING INSTALLATION INSTRUCTIONS.

NOTE : MAXIMUM WIDTH OF JOINT = 3/4".



HILTI, Inc.
 Plano, Texas USA (800) 879-8000

Sheet	1 of 1
Scale	3/16" = 1"
Date	Mar. 23, 2023

Drawing No.
**WWS
 0075d**