

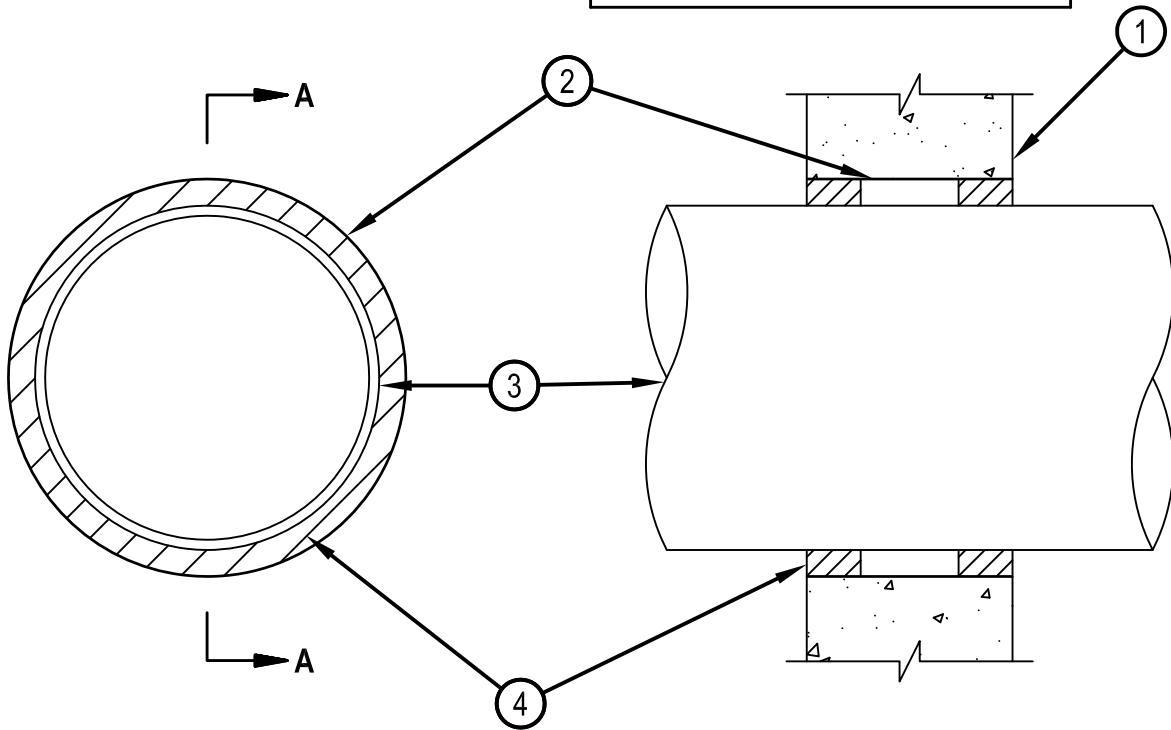


Classified by  
Underwriters Laboratories, Inc.  
to UL 1479 and CAN/ULC-S115

## System No. W-J-1041

WJ 1041

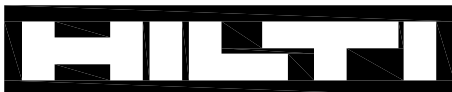
ANSI/UL1479 (ASTM E814)	CAN/ULC S115
F Rating — 4 Hr	F Rating — 4 Hr
T Rating — 0 Hr	FT Rating — 0 Hr
	FH Rating — 4 Hr
	FTH Rating — 0 Hr



### SECTION A-A

1. Wall Assembly — Min 7-5/8 in. (194 mm) thick wall assembly constructed of any UL Classified Concrete Blocks\*. Min 4 hr fire rated wall. Max diam of opening is 14-5/8 in. (371 mm).  
See Concrete Blocks (CAZT) category in the Fire Resistance Directory for names of manufacturers.
2. Steel Sleeve — Cylindrical sleeve fabricated from min 0.030 in. (0.8 mm) thick (No. 22 gauge) galv steel sheet steel and having a min 2 in. (51 mm) lap along the longitudinal seam. Length of sleeve to be equal to thickness of wall. Sleeve to be installed by coiling the sheet metal to a diam smaller than the through opening, inserting the coil through the openings and releasing the coil to let it uncoil against the circular cutouts in the concrete blocks.
3. Through Penetrants — One metallic pipe, conduit or tubing to be installed concentrically within the firestop system. Pipe, conduit or tubing to be rigidly supported on both sides of the wall assembly. The annular space between pipe, conduit or tubing and the periphery of the opening shall be minimum 7/8 in. to 1 in. (22 to 25 mm) maximum. The following types and sizes of metallic pipes, conduits or tubing may be used:
  - A. Steel Pipe — Nom 12 in. (305 mm) diam (or smaller) Schedule 10 (or heavier) steel pipe.
  - B. Iron Pipe — Nom 12 in. (305 mm) diam (or smaller) cast or ductile iron pipe.
  - C. Conduit — Nom 4 in. (102 mm) diam (or smaller) steel electric metallic tubing or 6 in. (152 mm) diam steel conduit.
  - D. Copper Tubing — Nom 6 in. (152 mm) diam (or smaller) Type L (or heavier) copper tubing.
  - E. Copper Pipe — Nom 6 in. (152 mm) diam (or smaller) Regular (or heavier) copper pipe.
4. Fill, Void or Cavity Material\* — Sealant — Min 2 in. (51 mm) thickness applied within steel sleeve, flush with both surfaces of wall.  
HILTI CONSTRUCTION CHEMICALS, DIV OF HILTI INC — FS-ONE Sealant or FS-ONE MAX Intumescent Sealant

\* Indicates such products shall bear the UL or cUL Certification Mark for jurisdictions employing the UL or cUL Certification (such as Canada), respectively.



**Hilti Firestop Systems**

Reproduced by HILTI, Inc. Courtesy of  
Underwriters Laboratories, Inc.  
January 21, 2015