

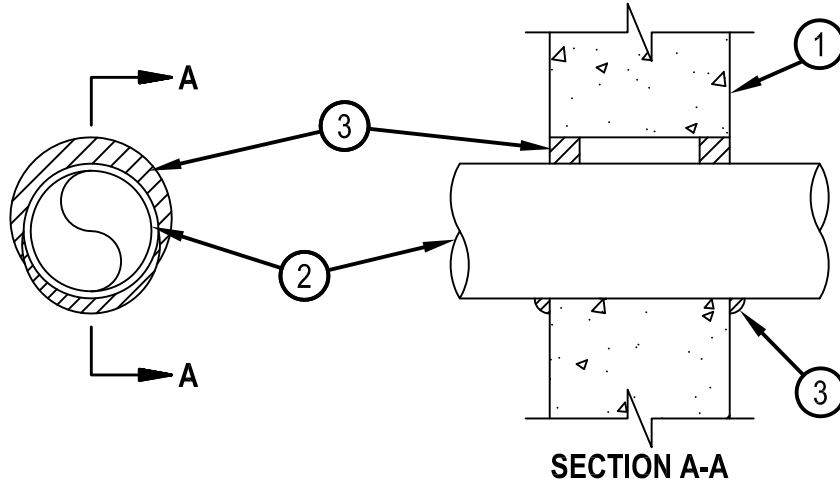


Classified by
Underwriters Laboratories, Inc.
to UL 1479 and CAN/ULC-S115

System No. W-J-1226

WJ 1226

ANSI/UL1479 (ASTM E814)	CAN/ULC S115
F Ratings — 1, 2, 3 and 4 Hr (See Item 3)	F Ratings — 1, 2, 3 and 4 Hr (See Item 3)
T Rating — 0 Hr	FT Rating — 0 Hr
L Rating At Ambient — Less Than 1 CFM/Sq Ft	FH Ratings — 1, 2, 3 and 4 Hr (See Item 3)
L Rating At 400 F — 4 CFM/Sq Ft	FTH Rating — 0 Hr
	L Rating At Ambient — Less Than 1 CFM/Sq Ft
	L Rating At 400 F — 4 CFM/Sq Ft



SECTION A-A

1. Wall Assembly — Min 6 in. (152 mm) thick lightweight or normal weight (100-150 pcf or 1600-2400 kg/m³) concrete. Wall may also be constructed of any UL Classified Concrete Blocks*. Max diam of opening is 5-3/4 in. (146 mm).
See Concrete Blocks (CAZT) category in the Fire Resistance Directory for names of manufacturers.
2. Through Penetrant — One metallic pipe, conduit or tube to be installed either concentrically or eccentrically within the firestop system. The annular space between the pipe, conduit or tube and periphery of opening shall be min 0 in. (point contact) to max 7/8 in. (22 mm). Pipe, conduit or tube to be rigidly supported on both sides of wall assembly.
 - A. Steel Pipe — Nom 4 in. (102 mm) diam (or smaller) Schedule 10 (or heavier) steel pipe.
 - B. Iron Pipe — Nom 4 in. (102 mm) diam (or smaller) cast or ductile iron pipe.
 - C. Conduit — Nom 4 in. (102 mm) diam (or smaller) rigid steel conduit.
 - D. Conduit — Nom 4 in. (102 mm) diam (or smaller) steel electrical metallic conduit.
 - E. Copper Tubing — Nom 4 in. (102 mm) diam (or smaller) Type L (or heavier) copper tubing.
 - F. Copper Pipe — Nom 4 in. (102 mm) diam (or smaller) Regular (or heavier) copper pipe.
3. Fill, Void or Cavity Material — Sealant* — Fill material applied within annulus, flush with both surfaces of wall. Type and thickness of sealant is dependent on F and FH Ratings as indicated in Table below. An additional 1/2 in. (13 mm) diameter bead of sealant applied at penetrant/gypsum board interface at point contact location on both surfaces of wall.

HILTI CONSTRUCTION CHEMICALS, DIV OF HILTI INC — FS-ONE, CP 606 Sealant or FS-ONE MAX Intumescent Sealant

F, FH Ratings hr	Sealant Type	Sealant Thickness, In. (mm)
1, 2	FS-ONE or CP 606	5/8 (16)
3	FS-ONE or CP 606	1 (25)
4	FS-ONE	1 (25)

* Indicates such products shall bear the UL or cUL Certification Mark for jurisdictions employing the UL or cUL Certification (such as Canada), respectively.



Hilti Firestop Systems

Reproduced by HILTI, Inc. Courtesy of
Underwriters Laboratories, Inc.
January 21, 2015