

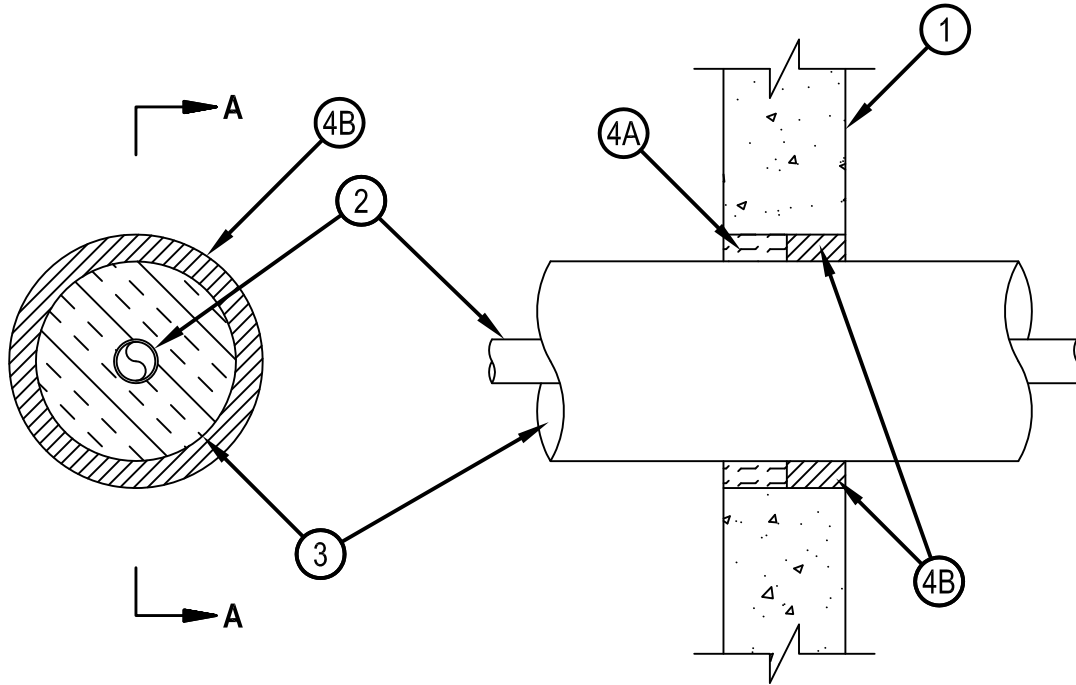


Classified by  
Underwriters Laboratories, Inc.  
to UL 1479 and CAN/ULC-S115

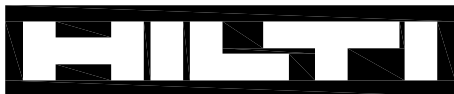
# System No. W-J-5067

WJ 5067

ANSI/UL1479 (ASTM E814)	CAN/ULC S115
F Rating — 1 Hr	F Rating — 1 Hr
T Rating — 1 Hr	FT Rating — 1 Hr
	FH Rating — 1 Hr
	FTH Rating — 1 Hr



**SECTION A-A**



**Hilti Firestop Systems**

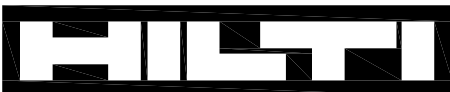
Reproduced by HILTI, Inc. Courtesy of  
Underwriters Laboratories, Inc.  
January 21, 2015

## System No. W-J-5067

WJ 5067

1. Wall Assembly — Min 3-1/8 in. (79 mm) thick reinforced lightweight or normal weight (100-150 pcf or 1600-2400 kg/m<sup>3</sup>) concrete. Wall may also be constructed of any UL Classified Concrete Blocks\*. Max diameter of opening 6-1/2 in. (165 mm).  
See Concrete Blocks (CAZT) category in the Fire Resistance Directory for names of manufacturers.
2. Through Penetrants — One metallic pipe or tube to be installed either concentrically or eccentrically within the firestop system. Pipe or tubing to be rigidly supported on both sides of the wall assembly. The following types and sizes of metallic pipes or tubing may be used:
  - A. Copper Tubing — Nom 1 in. (25 mm) diam (or smaller) Type L copper tubing.
  - B. Copper Pipe — Nom 1 in. (25 mm) diam (or smaller) Regular (or heavier) copper pipe.
3. Pipe Covering\* — Nom 2 in. (51 mm) thick hollow cylindrical heavy density (min. 3.5 pcf or 56 kg/m<sup>3</sup>) glass fiber units, jacketed on the outside with an all service jacket. Longitudinal joints sealed with metal fasteners or factory-applied SSL tape. Transverse joints secured with metal fasteners or with butt tape supplied with the product. The annular space between the insulated pipe and the periphery of the steel sleeve shall be min 1/4 in. (6 mm) to max 1-1/8 in. (29 mm).  
See Pipe and Equipment Covering — Materials (BRGU) category in the Building Materials Directory for names of manufacturers. Any pipe covering material meeting the above specifications and bearing the UL Classification Marking with a Flame Spread Index of 25 or less and a Smoke Developed Index of 50 or less may be used.
4. Firestop System — The firestop system shall consist of the following:
  - A. Packing Material — Min 1-5/8 in. (41 mm) thickness of min 4 pcf (64 kg/m<sup>3</sup>) mineral wool batt insulation firmly packed into opening on one side of the wall as a permanent form. Packing material to be recessed from one side of wall as required to accommodate the required thickness of fill material.
  - B. Fill, Void or Cavity Material — Sealant\* — Min 1-1/2 in. (38 mm) thickness of fill material applied within opening, flush with one surface of wall.  
HILTI CONSTRUCTION CHEMICALS, DIV OF HILTI INC — FS-ONE Sealant or FS-ONE MAX Intumescent Sealant

\* Indicates such products shall bear the UL or cUL Certification Mark for jurisdictions employing the UL or cUL Certification (such as Canada), respectively.



**Hilti Firestop Systems**

Reproduced by HILTI, Inc. Courtesy of  
Underwriters Laboratories, Inc.  
January 21, 2015

Page: 2 of 2