

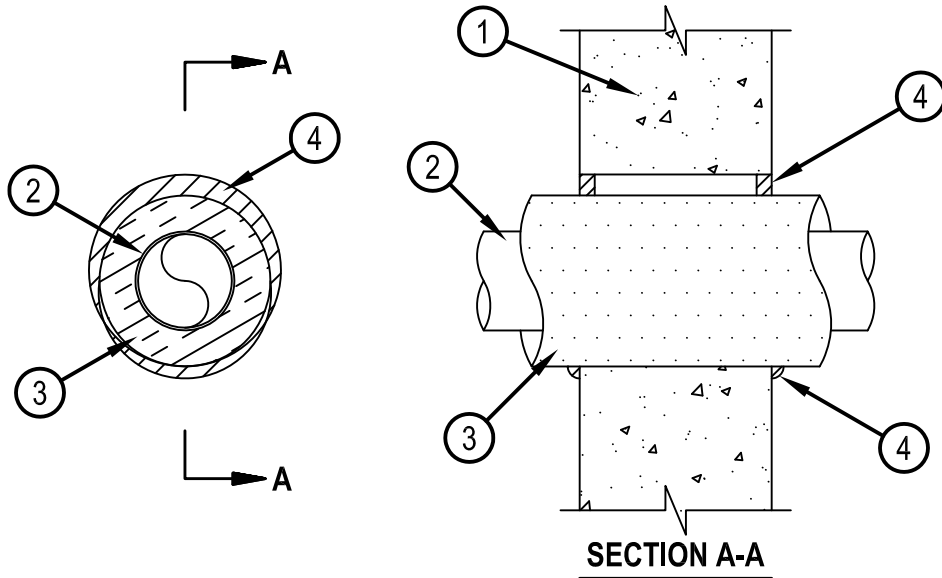


Classified by
Underwriters Laboratories, Inc.
to UL 1479 and CAN/ULC-S115

System No. W-J-5134

WJ 5134

ANSI/UL 1479 (ASTM E814)	CAN/ULC S115
F Rating — 2 Hr	F Rating — 2 Hr
T Ratings — 0 and 1 Hr (See Item 3)	FT Ratings — 0 and 1 Hr (See Item 3)
L Rating At Ambient — 4 CFM/sq ft (See Item 4)	FH Rating — 2 Hr
L Rating At 400 F — Less Than 1 CFM/sq ft (See Item 4)	FTH Ratings — 0 and 1 Hr (See Item 3)
	L Rating At Ambient — 4 CFM/sq ft (See Item 4)
	L Rating At 400 F — Less Than 1 CFM/sq ft (See Item 4)



1. Wall Assembly — Min 6 in. (152 mm) thick reinforced lightweight or normal weight (100-150 pcf or 1600-2400 kg/m³) concrete. Wall may also be constructed of any UL Classified Concrete Blocks*. Max diam of opening is 8 in. (203 mm).
See Concrete Blocks (CAZT) category in the Fire Resistance Directory for names of manufacturers.
2. Through Penetrant — One metallic pipe or tube to be installed eccentrically or concentrically within the firestop system. Pipe or tube to be rigidly supported on both sides of the wall assembly. The following types and sizes of metallic pipes and tubes may be used:
 - A. Steel Pipe — Nom 4 in. (102 mm) diam (or smaller) Schedule 5 (or heavier) steel pipe.
 - B. Iron Pipe — Nom 4 in. (102 mm) diam (or smaller) cast or ductile iron pipe.
 - C. Copper Pipe — Nom 4 in. (102 mm) diam (or smaller) Regular (or heavier) copper pipe.
 - D. Copper Tube — Nom 4 in. (102 mm) diam (or smaller) Type L (or heavier) copper tube.



Hilti Firestop Systems

Reproduced by HILTI, Inc. Courtesy of
Underwriters Laboratories, Inc.
January 23, 2015

System No. W-J-5134

WJ 5134

3. Pipe Covering* — Min 1 in. (25 mm) to max 1-1/2 in. (38 mm) thick hollow cylindrical heavy density (3.5 pcf or 56 kg/m³) glass fiber units jacketed on the outside with an all service jacket. Longitudinal joints sealed with metal fasteners or factory-applied self-sealing lap tape. Transverse joints secured with metal fasteners or with butt tape supplied with the product. The annular space between the insulated pipe and the periphery of the opening shall be min 0 in. (point contact) to max 7/8 in. (22 mm). When pipe covering thickness is less than 1-1/2 in. (38 mm), the T, FT and FTH Ratings are 0 Hr.

See Pipe Equipment Covering — Materials — (BRGU) Category in the Building Materials Directory for names of manufacturers. Any pipe covering material meeting the above specifications and bearing the UL Classification Marking with a Flame Spread Index of 25 or less and a Smoke Developed Index of 50 or less may be used.

4. Fill, Void or Cavity Material* — Sealant — Min 5/8 in. (16 mm) thickness of fill material applied within annulus, flush with both surfaces of wall assembly. At point contact location, min 1/2 in. (13 mm) diam bead of fill material applied at insulated metallic pipe/wall interface on both surfaces of wall. L Ratings apply only when FS-One Sealant is used.

HILTI CONSTRUCTION CHEMICALS, DIV OF HILTI INC — FS-One Sealant, FS-ONE MAX Intumescent Sealant, CP 606 Sealant, CFS-S SIL GG or CP 601S Sealant

* Indicates such products shall bear the UL or cUL Certification Mark for jurisdictions employing the UL or cUL Certification (such as Canada), respectively.



Hilti Firestop Systems

Reproduced by HILTI, Inc. Courtesy of
Underwriters Laboratories, Inc.
January 23, 2015

Page: 2 of 2