

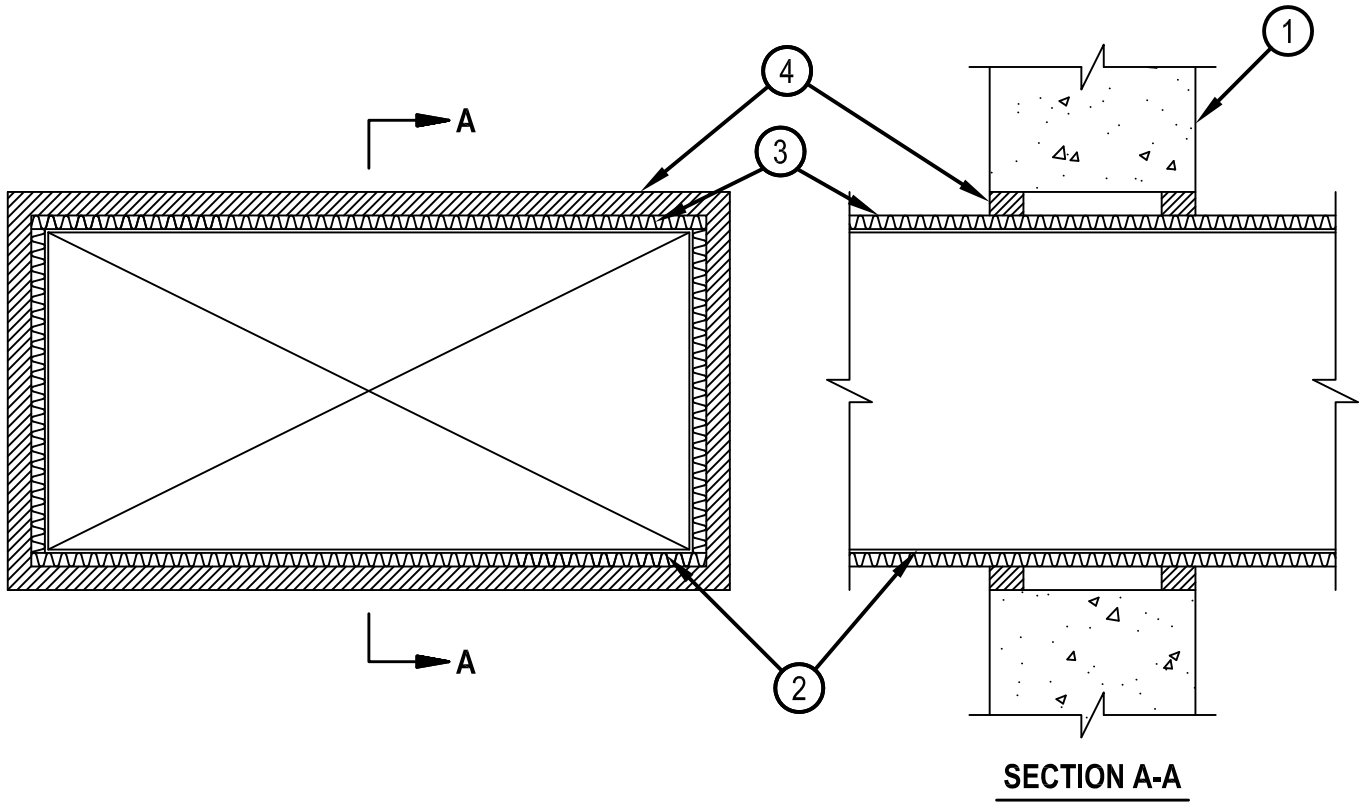


Classified by  
Underwriters Laboratories, Inc.  
to UL 1479 and CAN/ULC-S115

## System No. W-J-7029

WJ 7029

ANSI/UL1479 (ASTM E814)	CAN/ULC S115
F Rating — 1 and 2 Hr	F Rating — 1 and 2 Hr
T Rating — 1/2 and 3/4 Hr	FT Rating — 1/2 and 3/4 Hr
	FH Rating — 1 and 2 Hr
	FTH Rating — 1/2 and 3/4 Hr



**SECTION A-A**

1. Wall Assembly — Min 5 in. (127 mm) thick reinforced lightweight or normal weight (100-150 pcf or 1600-2400 kg/m<sup>3</sup>) concrete. Wall may also be constructed of any UL Classified Concrete Blocks\*. Max area of opening is 395 sq in. with max dimensions of 26-3/4 in. (679 mm).  
See Concrete Blocks (CAZT) category in the Fire Resistance Directory for names of manufacturers.
2. Steel Duct — Nom 24 in. by 12 in. (610 by 305 mm) (or smaller) No. 24 gauge (or heavier) steel duct to be installed eccentrically within the opening. The annular space shall be min 1 in. (25 mm) to max 1-3/4 in. (44 mm). Steel duct to be rigidly supported on both sides of wall assembly.
3. Batt and Blanket\* — Max 1-1/2 in. (38 mm) thick glass fiber batt or blanket (min 3/4 pcf or 12 kg/m<sup>3</sup>) jacketed on the outside with a foil-scrim-kraft facing. Longitudinal and transverse joints sealed with aluminum foil tape. During the installation of the fill material, the batt or blanket shall be compressed 50% such that the annular space within the firestop system shall be min 1/4 in. (6 mm) to max 1 in. (25 mm).  
See Batts and Blankets (BKNV) category in the Building Materials Directory for names of manufacturers. Any batt or blanket meeting the above specifications and bearing the UL Classification Marking with a Flame Spread Index of 25 or less and a Smoke Developed Index 50 or less may be used.
4. Fill, Void or Cavity Material\* - Sealant — Min 5/8 in. (16 mm) or 1-1/4 in. (32 mm) thickness of fill material applied within annulus, flush with both surfaces of wall for 1 or 2 hr walls, respectively. If voids develops after the fill material cures, the voids shall be sealed with additional fill material.  
HILTI CONSTRUCTION CHEMICALS, DIV OF HILTI INC — FS-ONE Sealant or FS-ONE MAX Intumescent Sealant

\* Indicates such products shall bear the UL or cUL Certification Mark for jurisdictions employing the UL or cUL Certification (such as Canada), respectively.



**Hilti Firestop Systems**

Reproduced by HILTI, Inc. Courtesy of  
Underwriters Laboratories, Inc.  
January 23, 2015