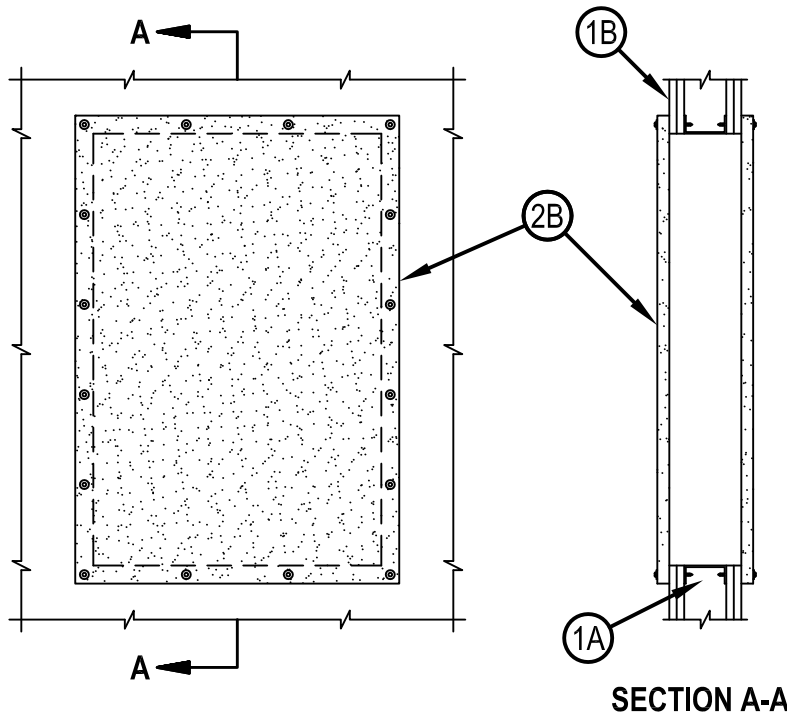


System No. W-L-0014



Classified by
Underwriters Laboratories, Inc.
to UL 1479 and CAN/ULC-S115

ANSI/UL1479 (ASTM E814)	CAN/ULC S115
F Rating — 1 or 2 Hr (See Item 1)	F Rating — 1 or 2 Hr (See Item 1)
T Rating — 1 Hr	FT Rating — 1 Hr
L Rating At Ambient — Less Than 1 CFM/sq ft	FH Rating — 1 or 2 Hr (See Item 1)
L Rating At 400 F — Less Than 1 CFM/sq ft	FTH Rating — 1 Hr
	L Rating At Ambient — Less Than 1 CFM/sq ft
	L Rating At 400 F — Less Than 1 CFM/sq ft



1. Wall Assembly — The 1 or 2 hr fire-rated gypsum board/stud wall assembly shall be constructed of the materials and in the manner specified if the individual U300, U400 or V400 Series Wall and Partition Designs in the Fire Resistance Directory and shall include the following construction features:

- A. Studs — Wall framing shall consist of either wood studs or channel shaped steel studs. Wood studs to consist of 2 by 4 in. (51 by 102 mm) lumber spaced 16 in. (406 mm) OC. Steel studs to be min 3-1/2 in. (89 mm) wide, fabricated from min 25 MSG galvanized steel, spaced max 24 in. (610 mm) OC. Additional studs to be used to completely frame around opening.
- B. Gypsum Board* — Min 1/2 in. (13 mm) thick with square or tapered edges. The gypsum board type, number of layers and sheet orientation shall be as specified in the individual Wall and Partition Design Number. Max area of the opening is to be 6 ft² (0.56 m²) with max dimension of 36 in. (914 mm).

The hourly F Rating of the firestop system is equal to the hourly fire rating of the wall assembly in which it is installed.

2. Firestop System — The firestop system shall consist of the following:

A. Fill, Void or Cavity Material* - Sealant — (Not Shown) — Min 1/8 in. (3 mm) thick bead of fill material applied around perimeter of opening prior to attaching board (Item 2B) to wall.

HILTI CONSTRUCTION CHEMICALS, DIV OF HILTI INC — FS-ONE or FS-ONE MAX Intumescent Sealant

A1. Fill, Void or Cavity Material* - Putty — (Not Shown) — As an alternate to Item 2A, a min 1/8 in. (3 mm) thick by 1 in. (25 mm) wide strip of putty applied around perimeter of opening prior to attaching board (Item 2B) to wall.

HILTI CONSTRUCTION CHEMICALS, DIV OF HILTI INC — CP 619T Firestop Putty Roll or CP 618 Firestop Putty Stick or CP 617 Firestop Putty Pad



Hilti Firestop Systems

Reproduced by HILTI, Inc. Courtesy of
Underwriters Laboratories, Inc.
January 23, 2015

System No. W-L-0014

WL 0014

B. Firestop Device* — Board — Board to be installed on each side of wall with min 1 in. (25 mm) overlap onto wall. Board to be attached using 3/16 in. (5 mm) diam by 3 in. (76 mm) long steel screws with 1-1/4 in. (32 mm) OD steel fender washers located at each corner and spaced max 8 in. (203 mm) OC in between.

HILTI CONSTRUCTION CHEMICALS, DIV OF HILTI INC — CP 675T Firestop Board

* Indicates such products shall bear the UL or cUL Certification Mark for jurisdictions employing the UL or cUL Certification (such as Canada), respectively.



Hilti Firestop Systems

Reproduced by HILTI, Inc. Courtesy of
Underwriters Laboratories, Inc.
January 23, 2015

Page: 2 of 2