



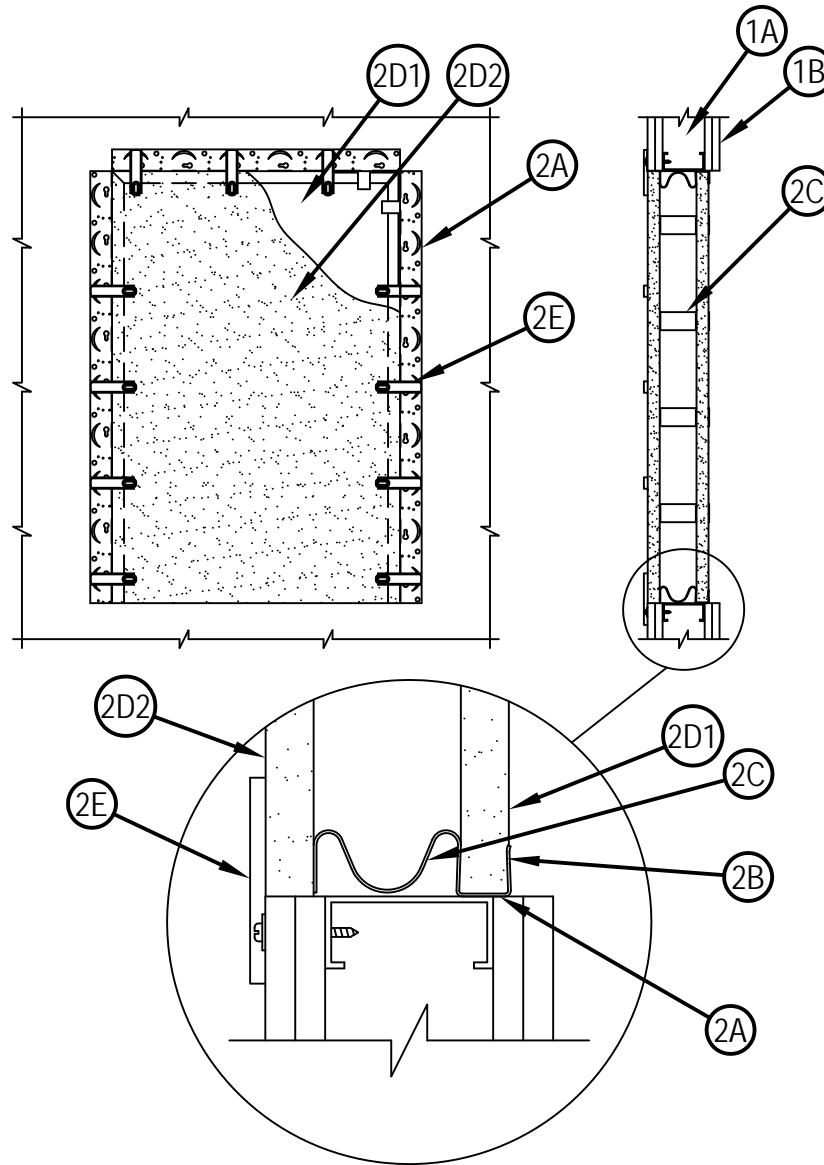
Classified by
Underwriters Laboratories, Inc.
to UL 1479 and CAN/ULC-S115

System No. W-L-0015

F Rating -- 1 or 2 Hr (See Item 1)

T Rating -- 1 Hr

WL 0015



1. Wall Assembly -- The 1 or 2 hr fire-rated gypsum board/stud wall assembly shall be constructed of the materials and in the manner specified if the individual U300, U400 or V400 Series Wall and Partition Designs in the Fire Resistance Directory and shall include the following construction features:

- A. Studs -- Wall framing shall consist of either wood studs or channel shaped steel studs. Wood studs to consist of 2 by 4 in. lumber spaced 16 in. OC. Steel studs to be min 3-1/2 in. wide, fabricated from min 25 MSG galvanized steel, spaced max 24 in. OC. Additional studs to be used to completely frame around the opening.
- B. Gypsum Board* -- Min 5/8 in. thick with square or tapered edges. The gypsum board type, number of layers and sheet orientation shall be as specified in the individual Wall and Partition Design Number. Max area of the opening is 864 sq. in. with a max dimension of 36 in. The hourly F Rating of the firestop system is equal to the hourly fire rating of the wall assembly in which it is installed.



Hilti Firestop Systems

Reproduced by HILTI, Inc. Courtesy of
Underwriters Laboratories, Inc.
June 01, 2004



Classified by
Underwriters Laboratories, Inc.
to UL 1479 and CAN/ULC-S115

System No. W-L-0015
F Rating -- 1 or 2 Hr (See Item 1)
T Rating -- 1 Hr

WL 0015

2. Firestop System -- The firestop system shall consist of the following:

- A. Firestop Device* -- Z-Frame -- Z-frame cut to length for the top and both sides of the opening. Each piece of Z-frame fastened to the face of the wall at each end and no greater than 12 in. OC along its length with 3/16 in. diam by 2-5/8 in. long Type S self-drilling steel screws.
HILTI CONSTRUCTION CHEMICALS, DIV OF HILTI INC -- CP 675T Z-Frame
- B. Fill, Void or Cavity Material* -- Putty -- Nom 1/4 in. thick by 1 in. wide strip of putty material applied on the back lip of the Z-frame.
HILTI CONSTRUCTION CHEMICALS, DIV OF HILTI INC -- CP 619T Firestop Putty Roll or CP 618 Firestop Putty Stick or CP 617 Firestop Putty Pad
- C. Firestop Device* -- Distance Holder -- Distance holders clipped over perimeter of first layer of board (item 2D1), spaced 8 in. OC.
HILTI CONSTRUCTION CHEMICALS, DIV OF HILTI INC -- CP 675T Distance Holders
- D. Firestop Device* -- Board -- Board cut to fit within opening with max 1/4 in. gap around perimeter. Board layers installed as described in items 2D1 and 2D2. When gap between board and opening is 1/8 in. to 1/4 in., the gap shall be filled to a 1 in. depth with one of the materials specified in Item 2B.
HILTI CONSTRUCTION CHEMICALS, DIV OF HILTI INC -- CP 675T Firestop Board
- D1. Board - First Layer -- First layer of board placed into opening with distance holders (item 2C) against back lip of Z-frame (item 2A) and putty (item 2B).
- D2. Board - Second Layer -- Second layer of board placed into opening against back of distance holders (item 2C).
- E. Firestop Device* -- Z-Frame Latch -- Secured to Z-frame with integral fasteners, and rotated to locked position over second layer of board (item 2D2). Z-Frame latches shall be located 12 in. OC, with a minimum of two latches per side. The four meeting edges between the wall and the board (including at the Z-Frame latches) shall be covered with a strip of putty (Item 2B).
HILTI CONSTRUCTION CHEMICALS, DIV OF HILTI INC -- CP 675T Z-Frame Latch

*Bearing the UL Classification Mark



Hilti Firestop Systems

Reproduced by HILTI, Inc. Courtesy of
Underwriters Laboratories, Inc.
June 01, 2004