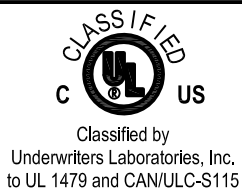
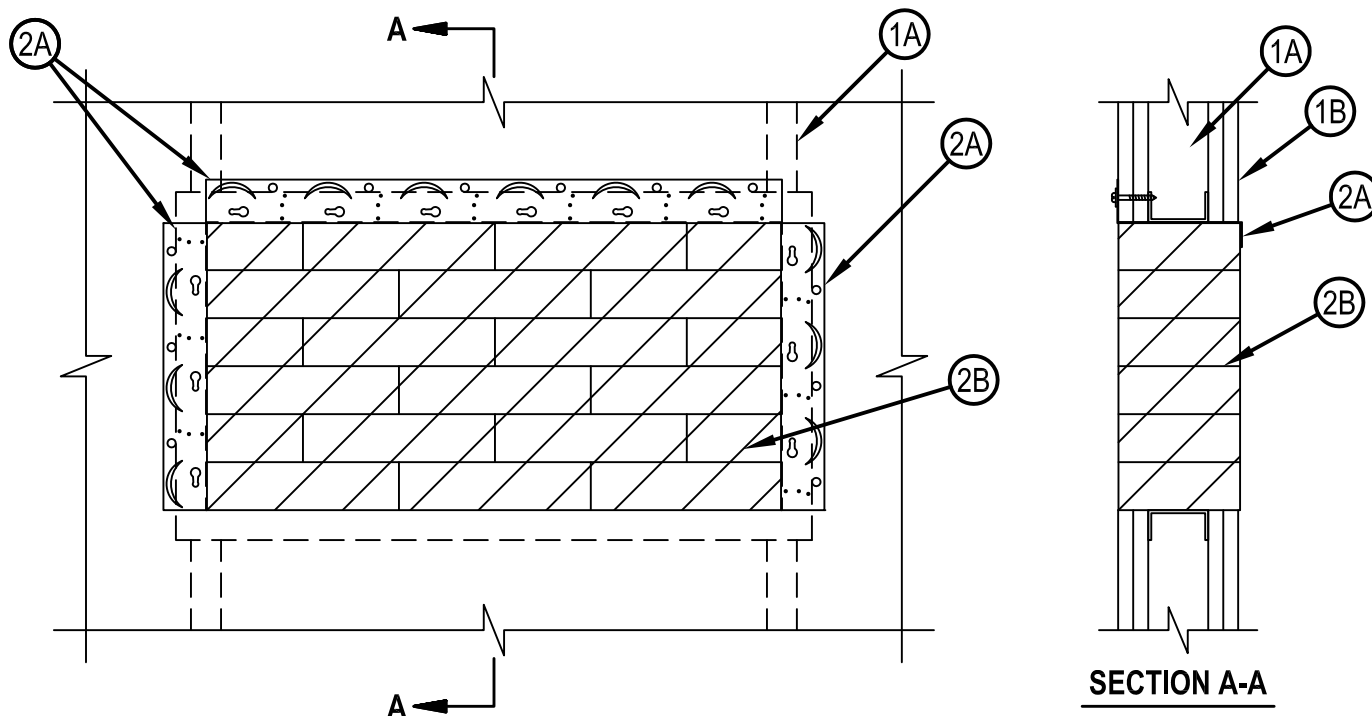


# System No. W-L-0043



ANSI/UL1479 (ASTM E814)	CAN/ULC S115
F Ratings — 1 and 2 Hr (See Item 1)	F Ratings — 1 and 2 Hr (See Item 1)
T Ratings — 0 and 1 Hr (See Item 1)	FT Ratings — 0 and 1 Hr (See Item 1)
	FH Ratings — 1 and 2 Hr (See Item 1)
	FTH Ratings — 0 and 1 Hr (See Item 1)



1. Wall Assembly — The 1 or 2 hr fire-rated gypsum board/stud wall assembly shall be constructed of the materials and in the manner specified if the individual U400, V400 or W400 Series Wall and Partition Designs in the Fire Resistance Directory and shall include the following construction features:

- A. Studs — Wall framing shall consist of channel shaped steel studs. Steel studs to be min 2-1/2 in. (64 mm) wide, fabricated from min 25 MSG galvanized steel, spaced max 24 in. (610 mm) OC. Additional framing members shall be used to completely frame around opening.
- B. Gypsum Board\* — Nom 5/8 in. (16 mm) thick with square or tapered edges. The gypsum board type, number of layers and sheet orientation shall be as specified in the individual Wall and Partition Design Number. Max area of opening is 288 in<sup>2</sup> (1858 cm<sup>2</sup>) with max dimension of 24 in. (610 mm).

The hourly F and FH Ratings of the firestop system are equal to the hourly fire rating of the wall assembly in which it is installed. The hourly T, FT and FTH Ratings of the firestop system are 0 hr for 1 hr rated walls and 1 hr for 2 hr rated walls.

2. Firestop System — The firestop system shall consist of the following:

- A. Firestop Device\* — Z-Frame — Z-frame cut to length for the top and both sides of the opening. Each piece of Z-frame fastened to the face of the wall and into the wall studs framing opening within 1/2 in. (13 mm) at each end and no greater than 12 in. (305 mm) OC along its length with min 3/16 in. (4.8 mm) diam by 2-5/8 in. (67 mm) long Type S self-drilling steel screws.

HILTI CONSTRUCTION CHEMICALS, DIV OF HILTI INC — CP 675T Z-Frame

- B. Fill Void or Cavity Materials\*-Fire Blocks — Fire blocks installed with 5 in. (127 mm) dimension projecting through opening, flush with back lip of Z-Frame (Item 2A). Blocks to be firmly packed and completely fill the entire opening. Blocks can be cut to smaller thickness where needed to assist in firm packing and filling any gaps or voids within opening.

HILTI CONSTRUCTION CHEMICALS, DIV OF HILTI INC — CFS-BL Firestop Block



**Hilti Firestop Systems**

Reproduced by HILTI, Inc. Courtesy of Underwriters Laboratories, Inc.  
January 23, 2015



Classified by  
Underwriters Laboratories, Inc.  
to UL 1479 and CAN/ULC-S115

## System No. W-L-0043

WL 0043

C. Fill Void or Cavity Materials\* — (Optional, Not Shown) Fill material applied to maximum extent possible to fill any voids that may exist within the opening.

HILTI CONSTRUCTION CHEMICALS, DIV OF HILTI INC — FS-ONE Sealant or FS-ONE MAX Intumescent Sealant, or CP618 Putty Stick

\* Indicates such products shall bear the UL or cUL Certification Mark for jurisdictions employing the UL or cUL Certification (such as Canada), respectively.



**Hilti Firestop Systems**

Reproduced by HILTI, Inc. Courtesy of  
Underwriters Laboratories, Inc.  
January 23, 2015