

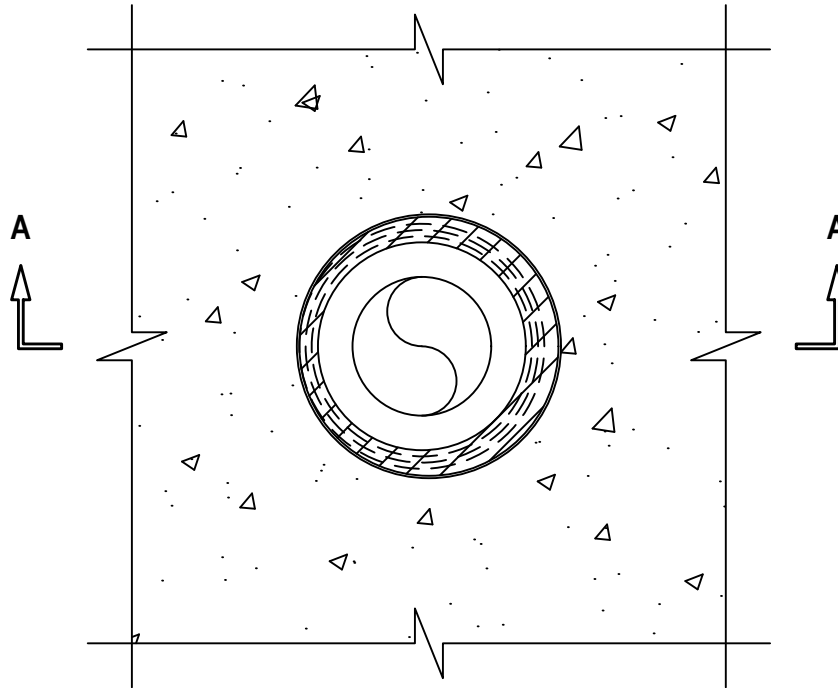
UL SYSTEM NO. C-AJ-2770

PLASTIC PIPE THROUGH CONCRETE FLOOR/WALL OR BLOCK WALL ASSEMBLY

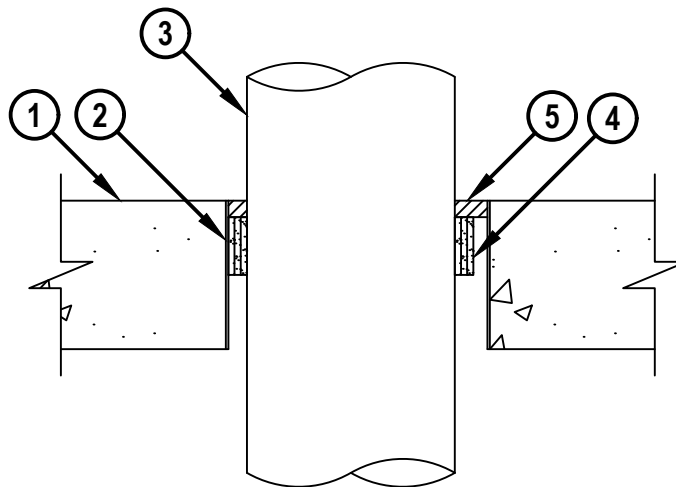
F-RATING = 2-HR.
T-RATING = 2-HR.

CAJ2770b.010220

TOP VIEW



SECTION A-A



HILTI, Inc.
Plano, Texas USA (800) 879-8000

Sheet	1 of 2
Scale	1 1/64" = 1"
Date	Jan. 02, 2020

Drawing No.

**CAJ
2770b**

Saving Lives through Innovation and Education

PLASTIC PIPE THROUGH CONCRETE FLOOR/WALL OR BLOCK WALL ASSEMBLY

F-RATING = 2-HR.

T-RATING = 2-HR.

CAJ2770b.010220

1. CONCRETE FLOOR OR WALL ASSEMBLY (2-HR. FIRE-RATING) :
 - A. LIGHTWEIGHT OR NORMAL WEIGHT CONCRETE FLOOR OR WALL (MINIMUM 4-1/2" THICK).
 - B. ANY UL CLASSIFIED CONCRETE BLOCK WALL.
2. [OPTIONAL] MAXIMUM 8" (MIN. 28 GA.) DIAMETER GALVANIZED STEEL SLEEVE WITH MINIMUM 1-1/2" LAP ALONG LONGITUDINAL SEAM.
3. PENETRATING ITEM TO BE ONE OF THE FOLLOWING :
 - A. MAXIMUM 6" (160 mm) NOMINAL DIAMETER PP-R PLASTIC PIPE (SDR 6) (MANUFACTURED BY COSMOPLAST) (CLOSED PIPING SYSTEM).
 - B. MAXIMUM 4" (110 mm) NOMINAL DIAMETER PP-R PLASTIC PIPE (SDR 6) (MANUFACTURED BY COPRAX) (CLOSED PIPING SYSTEM).
 - C. MAXIMUM 6" (152 mm) NOMINAL DIAMETER HDPE PLASTIC PIPE (SDR 11) (CLOSED PIPING SYSTEM).
4. HILTI CP 648E WRAP STRIP (NOMINAL 3/16" THICK x 1-3/4" WIDE) CONTINUOUSLY WRAPPED AROUND THE OUTER CIRCUMFERENCE OF THE PIPE, IN ACCORDANCE WITH TABLE BELOW, WITH ENDS BUTTED AND HELD IN PLACE WITH TAPE. WRAP STRIP RECESSED 1/2" FROM TOP SURFACE OF CONCRETE FLOOR.
5. MINIMUM 1/2" DEPTH HILTI FS-ONE MAX INTUMESCENT FIRESTOP SEALANT FLUSH WITH TOP SURFACE OF FLOOR.

ITEM 3A PIPE DIAM, IN. (OD MM)*	ITEM 3B PIPE DIAM, IN. (OD MM)*	ITEM 3C PIPE DIAM, IN. (MM)	MAX OPENING DIAM, IN. (MM)	ANNULAR SPACE		NUMBER OF LAYERS
				MIN, IN. (MM)	MAX, IN. (MM)	
1-1/2 (40)	1-1/2 (50)	1-1/2 (50)	3 (76)	3/16 (4.8)	15/16 (24)	1
2 (50)	2 (63)	2 (51)	3-1/2 (89)	3/16 (4.8)	15/16 (24)	1
-	-	2 (51)	4 (102) **	3/8 (10)	1-1/4 (32)	2
3 (75)	3 (90)	3 (90)	4 (102)	3/16 (4.8)	15/16 (24)	1
4 (100)	4 (110)	4 (102)	6 (152)	3/8 (10)	1-1/8 (29)	2
6 (160)	-	6 (152)	8 (203)	9/16 (14)	1 (25)	3

NOTE : METRIC DIMENSIONS SHOWN FOR PIPES IN PARENTHESIS ARE ACTUAL METRIC OD'S MARKED ON PIPE.

**APPLICABLE TO ITEM 2A SLEEVE ONLY WHEN OPENING IS SLEEVED.

NOTE : HILTI CP 648E WRAP STRIP AND HILTI FS-ONE MAX INTUMESCENT FIRESTOP SEALANT ARE REQUIRED ON BOTH SIDES OF A WALL.



HILTI, Inc.
Plano, Texas USA (800) 879-8000

Sheet	2 of 2
Scale	-
Date	Jan. 02, 2020

Drawing No.
**CAJ
2770b**