



Classified by
Underwriters Laboratories, Inc.
to UL 1479 and CAN/ULC-S115

System No. W-L-1175

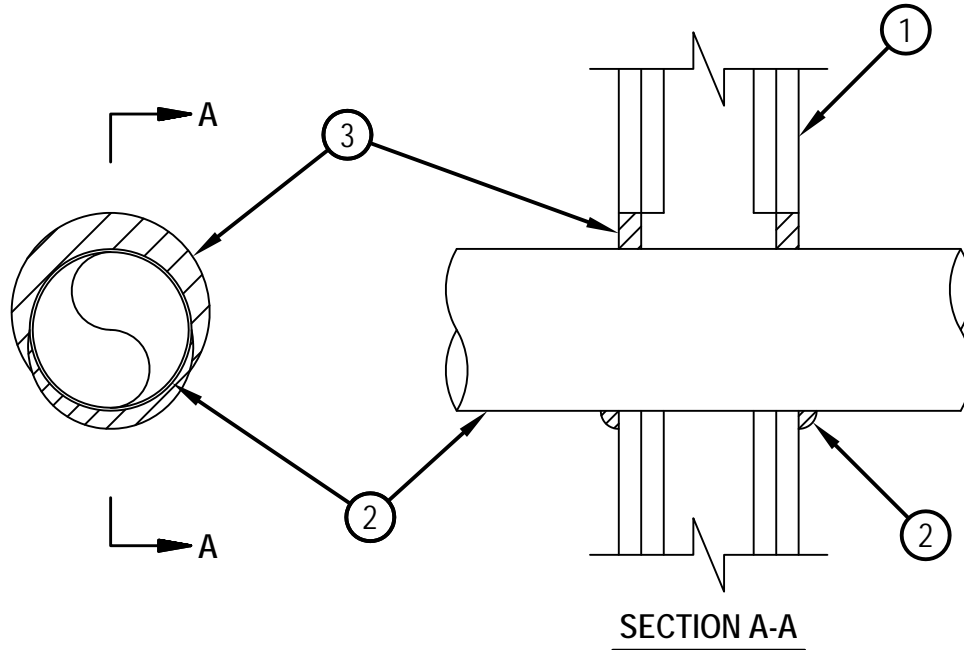
F Ratings - 1 and 2 Hr (See Item 1)

T Rating - 0 Hr

L Rating at Ambient - Less Than 1 CFM/sq ft

L Rating at 400 F - Less Than 1 CFM/sq ft

WL 1175



1. Wall Assembly — The 1 or 2 hr fire rated wallboard/stud wall assembly shall be constructed of the materials and in the manner specified in the individual U300 or U400 Series Wall and Partition Designs in the UL Fire Resistance Directory and shall include the following construction features.

A. Studs — Wall framing shall consist of either wood studs or steel channel studs. Wood studs to consist of nom 2 by 4 in. lumber spaced 16 in. OC. Steel studs to be min 2-1/2 in. wide and spaced max 24 in. OC.

B. Gypsum Board* — Nom 5/8 in. thick, 4 ft wide with square or tapered edges. The gypsum wallboard type, thickness, number of layers, fastener type and sheet orientation shall be as specified in the individual U300 or U400 Series Design in the Fire Resistance Directory. Max diam of opening is 5-1/2 in.

The hourly F and T Ratings of the firestop system is equal to the hourly fire rating of the wall assembly in which it is installed.

2. Through Penetrant — One metallic tubing or conduit installed concentrically or eccentrically within the firestop system. Tube or conduit to be rigidly supported on both sides of wall assembly. The annular space between the tube or conduit and periphery of the steel sleeve shall be min 0 in. (point contact) to max 1 in. The following types and sizes of metallic tube or conduit may be used:

A. Conduit — Nom 4 in. diam (or smaller) steel electrical metallic tubing or steel conduit.

3. Fill Void or Cavity Material* — Putty — Min 5/8 in. thickness of fill material applied within the annulus, flush with both surfaces of wall. At point contact location between penetrant and wall, a 1/4 in. crown of fill material shall be applied at the conduit/wall interface on both sides of the assembly, lapping 1/4 in. on the conduit and 1/4 in. beyond the periphery of the opening.

HILTI INC — CP618 Putty Stick

*Bearing the UL Classification Mark



Hilti Firestop Systems

Reproduced by HILTI, Inc. Courtesy of
Underwriters Laboratories, Inc.

February 08, 2006