

UL/cUL SYSTEM NO. W-J-7152

**SHEET METAL DUCT (WITHOUT DAMPER) THROUGH CONCRETE WALL
OR BLOCK WALL ASSEMBLY**

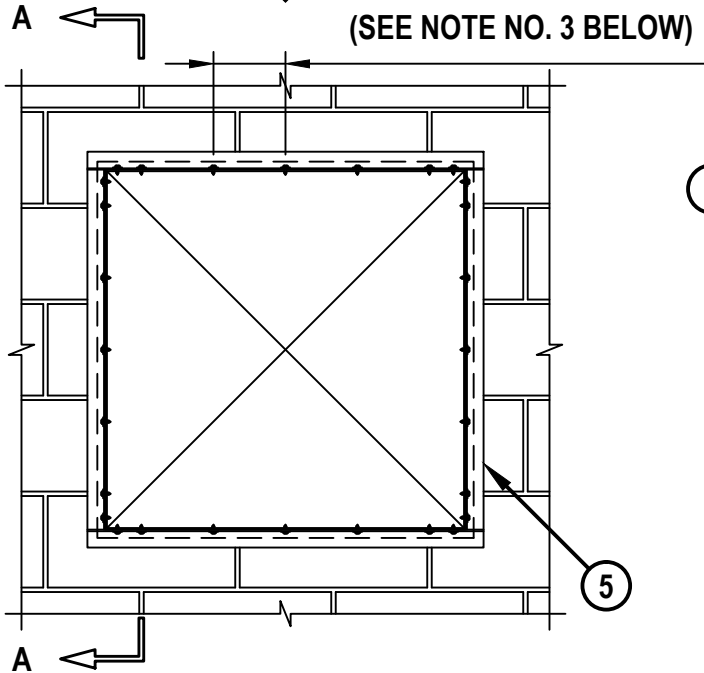
F-RATING = 2-HR.

T-RATING = 3/4-HR.

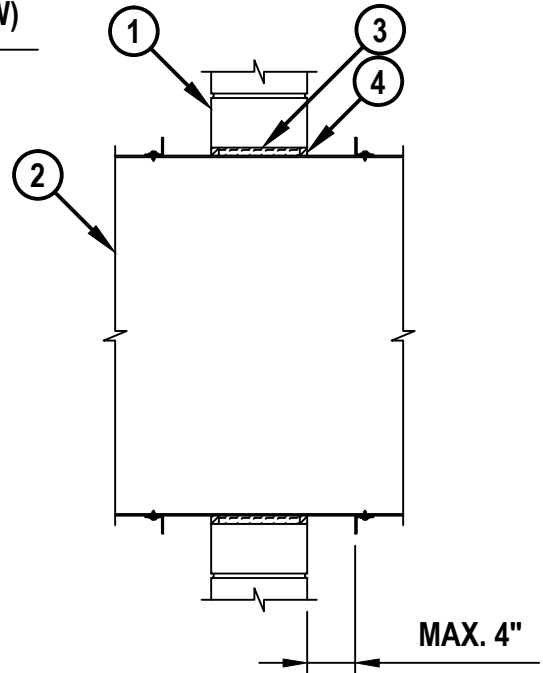
L-RATING AT AMBIENT = LESS THAN 1 CFM / SQ FT

L-RATING AT 400°F = LESS THAN 1 CFM / SQ FT

FRONT VIEW MAX. 6" C/C SPACING
(SEE NOTE NO. 3 BELOW)



SECTION A-A



1. CONCRETE WALL ASSEMBLY (2-HR. FIRE-RATING) :
 - A. LIGHTWEIGHT OR NORMAL WEIGHT CONCRETE WALL (MINIMUM 6" THICK).
 - B. ANY UL/cUL CLASSIFIED CONCRETE BLOCK WALL.
2. MAXIMUM 30" x 30" RECTANGULAR SHEET METAL DUCT (MIN. 24 GA.).
2. PENETRATING ITEM TO CONSIST OF ONE OF THE FOLLOWING :
 - A. MAXIMUM 30" x 30" RECTANGULAR SHEET METAL DUCT (MIN. 24 GA.).
 - B. MAXIMUM 30" x 30" RECTANGULAR SHEET METAL DUCT (MIN. 24 GA.) WITH BW11 COATING MATERIAL (FLAMEBAR BW11 FIRE RATED DUCTWORK BY FIRESPRAY INTERNATIONAL, LTD.).
3. MINIMUM 4-3/4" THICKNESS MINERAL WOOL (MIN. 4 PCF DENSITY) TIGHTLY PACKED AND RECESSED TO ACCOMMODATE SEALANT.
4. MINIMUM 5/8" DEPTH HILTI FS-ONE MAX INTUMESCENT FIRESTOP SEALANT.
5. STEEL RETAINING ANGLES (SEE NOTE NO. 3 BELOW).

NOTES : 1. MAXIMUM SIZE OF OPENING = 31-1/8" x 31-3/8".
2. ANNULAR SPACE = MINIMUM 1/4", MAXIMUM 1-1/8".
3. FASTEN STEEL ANGLE (1-1/2" x 1-1/2" x MIN. 20 GA.) TO DUCT WITH NO. 10 SHEET METAL SCREWS SPACED MAXIMUM 1" FROM ENDS AND MAXIMUM 6" OC. ANGLES TO BE SECURELY ATTACHED TO STEEL DUCT A MAXIMUM 4" FROM WALL SURFACES ON BOTH SIDES OF CONCRETE WALL ASSEMBLY.



HILTI, Inc.
Plano, Texas USA (800) 879-8000

Sheet	1 of 1
Scale	1/16" = 1"
Date	Jan. 30, 2018

Drawing No.

**WJ
7152c**

Saving Lives through Innovation and Education

WJ7152c.013018