

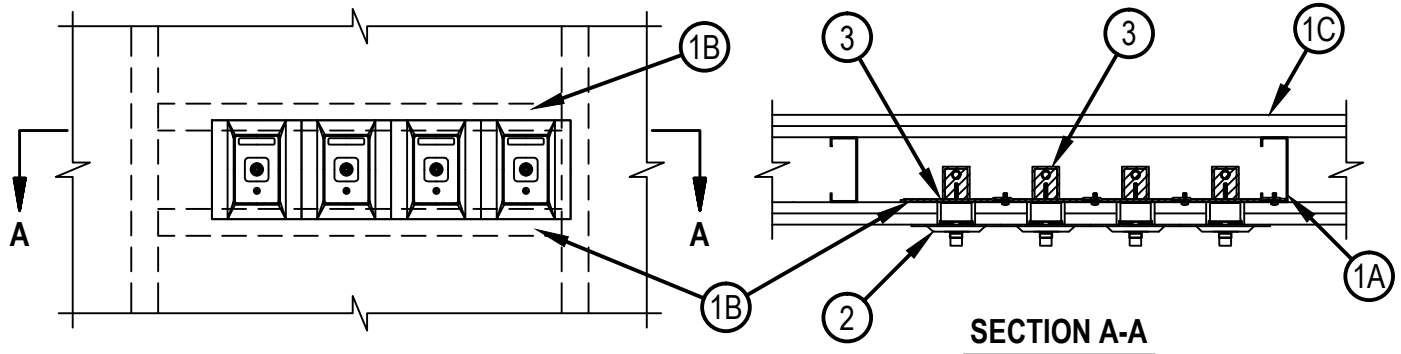


Classified by  
Underwriters Laboratories, Inc.  
to UL 1479 and CAN/ULC-S115

## System No. W-L-1462

WL 1462

ANSI/UL1479 (ASTM E814)	CAN/ULC S115
F Rating — 1 and 2 Hr (See Item 1)	F Rating — 1 and 2 Hr (See Item 1)
T Rating — 1 and 2 Hr (See Item 1)	FT Rating — 1 and 2 Hr (See Item 1)
	FH Rating — 1 and 2 Hr (See Item 1)
	FTH Rating — 1 and 2 Hr (See Item 1)



1. Wall Assembly — The 1 or 2 hr fire-rated gypsum wallboard/stud wall assembly shall be constructed of the materials and in the manner specified in the individual U300, U400 or V400 Series Wall and Partition Designs in the UL Fire Resistance Directory and shall include the following construction features:

- A. Studs — Wall framing may consist of either wood studs or steel channel studs. Wood studs to consist of nom 2 by 4 in. (51 by 102 mm) lumber spaced max 16 in. (406 mm) OC. Steel studs to be min 3-1/2 in. (89 mm) wide and spaced max 24 in. (610 mm) OC.
- B. Steel Straps — Min 1-1/2 in. (38 mm) wide, 16 gauge (or heavier) galvanized steel straps secured to studs with two steel screws at each end. Straps to be located across top and bottom of the openings, 4-1/2 in. (114 mm) apart.
- C. Gypsum Board\* — The gypsum wallboard type, thickness, number of layers and orientation shall be as specified in the individual Wall and Partition Design. Individual openings to be 2-1/8 in. (54 mm) wide by 3-11/16 in. (94 mm) high.
- D. Batts and Blankets\* — (Not shown) - Min R19 glass fiber or mineral wool insulation fitted in stud cavity.

The hourly F and T Rating of the firestop system is equal to the hourly fire rating of the wall assembly in which it is installed.

2. Station Outlets+ — Max four station outlets for use in medical gas systems distributing oxygen, nitrous oxide, vacuum, evacuation, air and nitrogen in hospitals in rigid piping systems at pressures not exceeding 100 psig. Station outlet provided with a rough-in assembly, latch valve assembly and die-cast trim plate. The rough-in assembly is screw attached to the steel straps, (Item 1B). The installation within the wall assembly shall be in accordance with the manufacturer's installation instructions.

BEACON MEDICAL PRODUCTS L L C, DBA BEACONMEDAES — Series B

3. Fill, Void or Cavity Material\* — Putty Pad — Min 1/8 in. (3.2 mm) thick moldable putty pads to be installed to completely cover the back side of the station outlet rough-in plate and extend to cover steel straps to which the rough-in plate is connected. Putty pads to overlap each other a min 1/4 in. (6 mm). Additional amount of putty pad to completely cover horizontal section of pipe fitting at exterior of box and extend approximately 1 in. (25 mm) up the vertical section of piping.

HILTI CONSTRUCTION CHEMICALS, DIV OF HILTI INC — CP 617 Firestop Putty Pad

\*Bearing the UL Classification Mark

+Bearing the UL Listing Mark



Hilti Firestop Systems

Reproduced by HILTI, Inc. Courtesy of  
Underwriters Laboratories, Inc.

December 09, 2013