

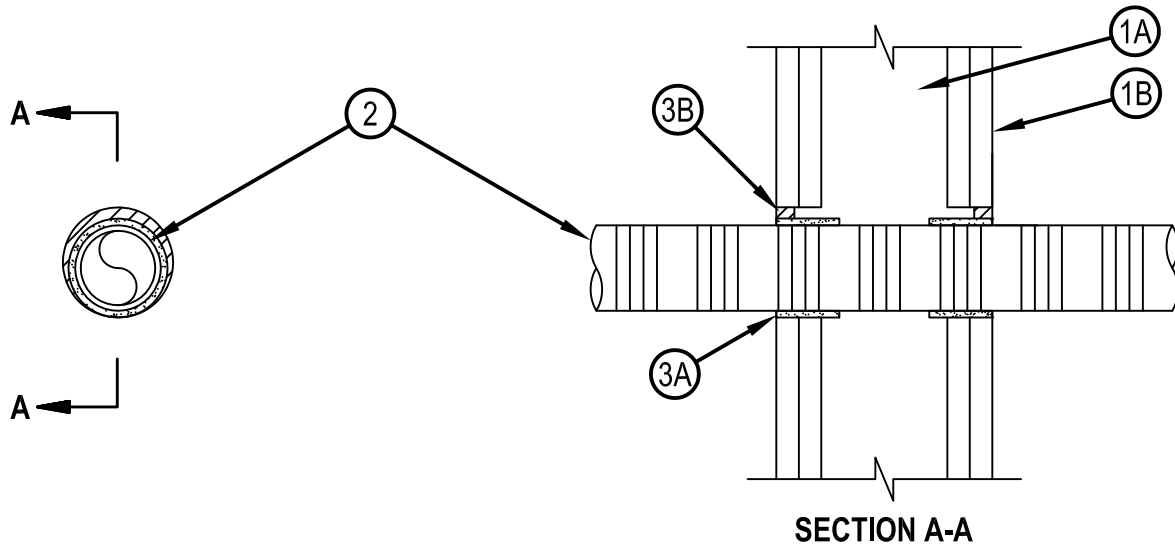


Classified by
Underwriters Laboratories, Inc.
to UL 1479 and CAN/ULC-S115

System No. W-L-2677

WL 2677

| ANSI/UL1479 (ASTM E814) | CAN/ULC S115 |
|--|---|
| F Ratings — 1 and 2 Hr (See Item 1) | F Ratings — 1 and 2 Hr (See Item 1) |
| T Ratings — 0 Hr and 1-3/4 Hr (See Item 1) | FT Ratings — 0 and 1-3/4 Hr (See Item 1) |
| | FH Ratings — 1 and 2 Hr (See Item 1) |
| | FTH Ratings — 0 and 1-3/4 Hr (See Item 1) |



System tested with a pressure differential of 50 Pa between the exposed and the unexposed surfaces with the higher pressure on the exposed side.

- Wall Assembly** — The fire-rated gypsum board/stud wall assembly shall be constructed of the materials and in the manner specified in the individual U300, U400, V400 or W400 Series Wall and Partition Designs in the UL fire Resistance Directory and shall include the construction features noted below:
 - Studs** — Wall framing may consist of either wood studs or steel channel studs. Wood studs to consist of nom 2 by 4 in. (51 by 102 mm) lumber spaced max 16 in. (406 mm) OC. Steel studs to be min 3-1/2 in. (89 mm) wide and spaced max 24 in. (610 mm) OC.
 - Gypsum Board*** — Nom 5/8 in. (16 mm) thick gypsum board, as specified in the individual Wall and Partition Design. Max diam of opening is 3 in. (76 mm).
The hourly F and FH Ratings of the firestop system are equal to the hourly fire rating of the wall assembly in which it is installed. The T, FT and FTH Ratings are 0 and 1-3/4 Hr for 1 and 2 Hr rated assemblies, respectively.
- Electrical Nonmetallic Tubing+** — Nom 2 in. (51 mm) diam (or smaller) corrugated wall electrical nonmetallic tubing (ENT). Annular space between periphery of opening to be min 3/16 in. (4.8 mm) to max 3/4 in. (19 mm). ENT to be installed as specified in the National Electric Code. See Electrical Nonmetallic Tubing (FKHU) category in the Electrical Construction Material Directory for names of manufacturers.
- Firestop System** — The firestop system shall consist of the following:
 - Fill, Void or Cavity Material*** — **Wrap Strip** — Nom 3/16 in. (5 mm) thick by 1-3/4 in. (44 mm) wide intumescent wrap strip. One layer individually wrapped around the through-penetrant with the ends butted and held in place with tape. Wrap strip slid into annular space and installed flush with both surfaces of wall.
HILTI CONSTRUCTION CHEMICALS, DIV OF HILTI INC — CP-648E Wrap Strip
 - Fill, Void or Cavity Material*** - **Sealant** — Min 5/8 in. (16 mm) thickness of fill material applied within the annulus, flush with both surfaces of wall.
HILTI CONSTRUCTION CHEMICALS, DIV OF HILTI INC — FS-ONE MAX Intumescent Sealant

* Indicates such products shall bear the UL or cUL Certification Mark for jurisdictions employing the UL or cUL Certification (such as Canada), respectively.

+ Bearing the UL Listing Mark



Hilti Firestop Systems

Reproduced by HILTI, Inc. Courtesy of
Underwriters Laboratories, Inc.
August 15, 2017