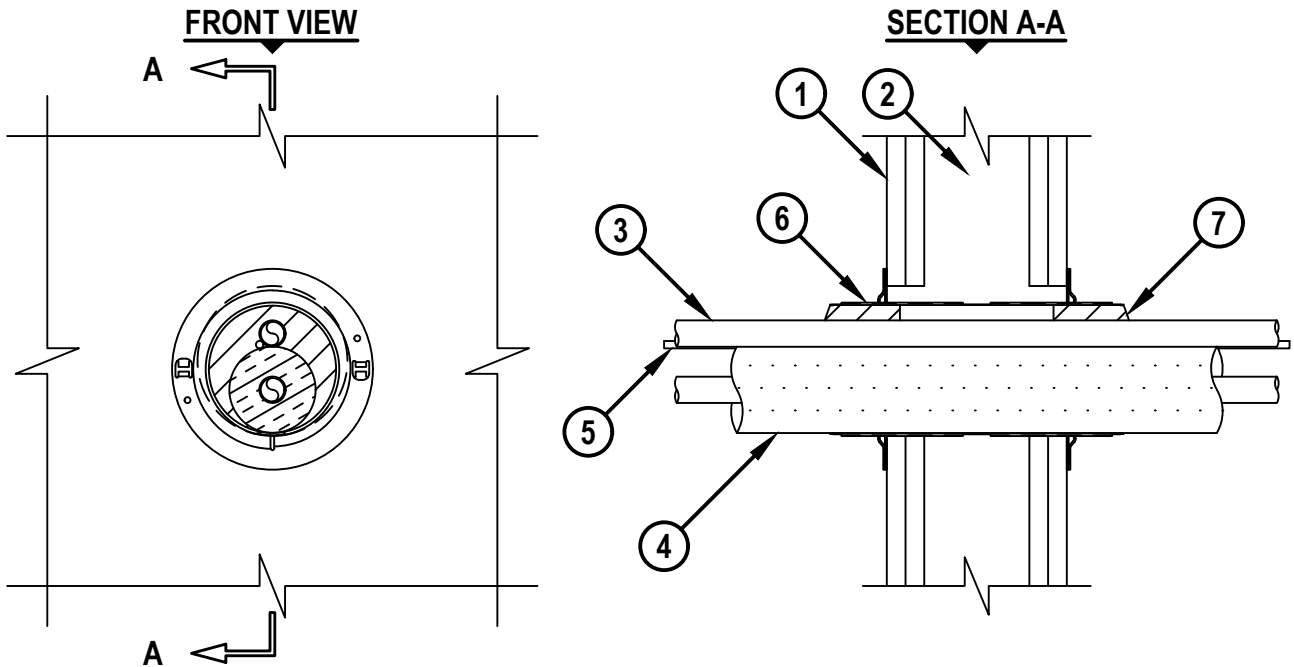


HVAC LINE SET THROUGH GYPSUM WALL ASSEMBLY

F-RATING = 1-HR. OR 2-HR.

T-RATING = 0-HR.

WL8110a.091417



1. GYPSUM WALL ASSEMBLY (UL/cUL CLASSIFIED U300, U400, V400, OR W400 SERIES) (1-HR. OR 2-HR. FIRE-RATING) (2-HR. SHOWN).
2. [NOT SHOWN] WOOD STUDS TO CONSIST OF NOMINAL 2" x 4" LUMBER (SPACED MAXIMUM 16" OC). STEEL STUDS TO BE MINIMUM 3-1/2" WIDE (SPACED MAXIMUM 24" OC).
3. PENETRATING ITEMS TO BE ONE OF THE FOLLOWING (MAX. QTY. = 2) :
 - A. MAXIMUM 3/4" NOMINAL DIAMETER STEEL PIPE (SCHEDULE 5 OR HEAVIER).
 - B. MAXIMUM 3/4" NOMINAL DIAMETER CAST OR DUCTILE IRON PIPE.
 - C. MAXIMUM 3/4" NOMINAL DIAMETER COPPER PIPE OR TUBING.
4. NOMINAL 1" THICK AB/PVC PIPE INSULATION INSTALLED ON ONE METALLIC PIPE.
5. MAXIMUM 4 PAIR NO. 18 AWG THERMOSTAT CABLE WITH PVC JACKET.
6. HILTI CFS-SL SK FIRESTOP SLEEVE (4") CENTERED WITHIN WALL. DEVICE FLANGES SPIN CLOCKWISE ONTO DEVICE THREADS OVER SMOKE GASKET, BUTTING TIGHTLY TO BOTH SIDES OF WALL.
7. HILTI CFS-PL FIRESTOP PLUG (4") CUT TO FIT AROUND THE CABLE BUNDLE AND INSTALLED TIGHTLY WITHIN SLEEVE, FLUSH WITH THE END OF THE SLEEVE ON BOTH SIDES OF THE WALL.

NOTES : 1. MAXIMUM DIAMETER OF OPENING = 5".
 2. ANNULAR SPACE BETWEEN PENETRANTS = NOMINAL 0".
 3. ANNULAR SPACE BETWEEN DEVICE AND PERIPHERY OF OPENING = MINIMUM 0", MAXIMUM 1".



HILTI, Inc.
 Plano, Texas USA (800) 879-8000

Sheet	1 of 1
Scale	5/32" = 1"
Date	Sep. 14, 2017

Drawing No.

**WL
8110a**