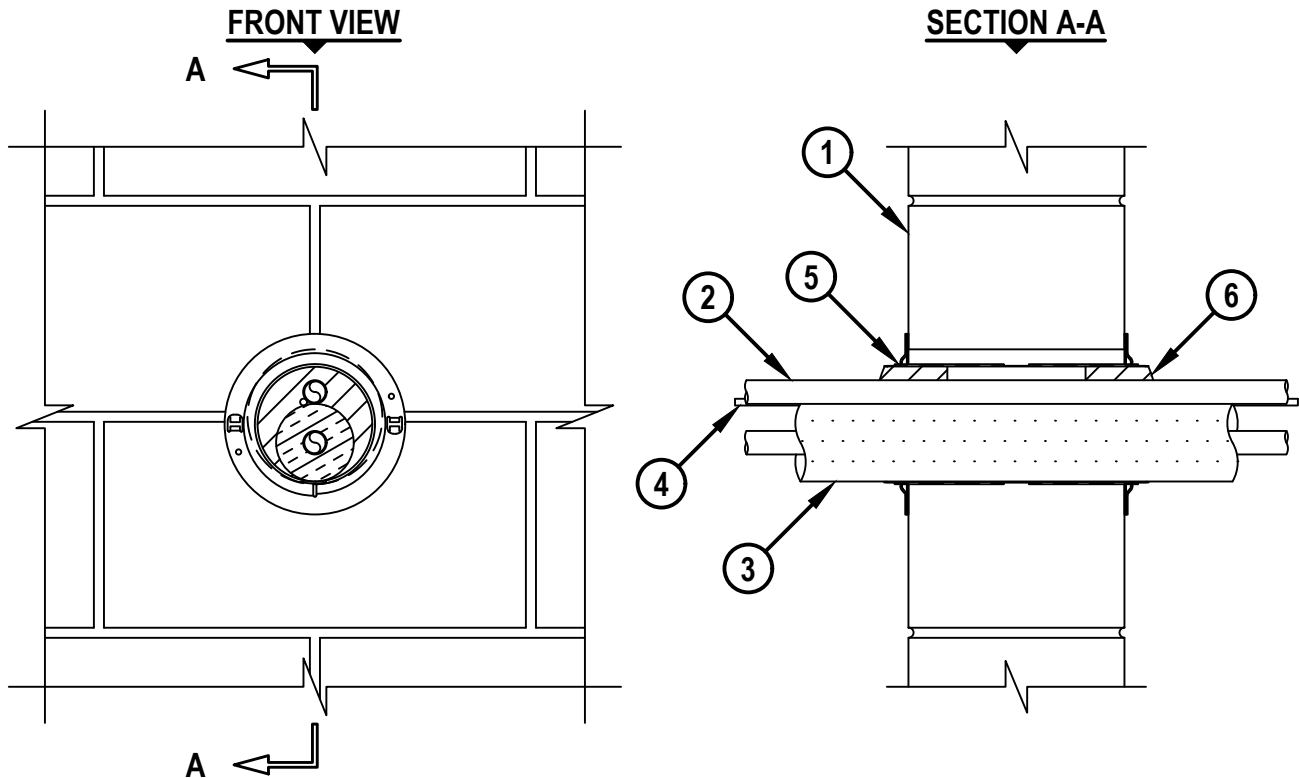


**HVAC LINE SET THROUGH CONCRETE WALL OR CONCRETE BLOCK WALL ASSEMBLY**

F-RATING = 2-HR.  
T-RATING = 0-HR.

WJ8068a.091417



1. CONCRETE WALL ASSEMBLY (2-HR. FIRE-RATING) :
  - A. LIGHTWEIGHT OR NORMAL WEIGHT CONCRETE WALL (MINIMUM 6" THICK).
  - B. ANY UL/cUL CLASSIFIED CONCRETE BLOCK WALL.
2. PENETRATING ITEMS TO BE ONE OF THE FOLLOWING (MAX. QTY. = 2) :
  - A. MAXIMUM 3/4" NOMINAL DIAMETER STEEL PIPE (SCHEDULE 5 OR HEAVIER).
  - B. MAXIMUM 3/4" NOMINAL DIAMETER CAST OR DUCTILE IRON PIPE.
  - C. MAXIMUM 3/4" NOMINAL DIAMETER COPPER PIPE OR TUBING.
3. NOMINAL 1" THICK AB/PVC PIPE INSULATION INSTALLED ON ONE METALLIC PIPE.
4. MAXIMUM 4 PAIR NO. 18 AWG THERMOSTAT CABLE WITH PVC JACKET.
5. HILTI CFS-SL SK FIRESTOP SLEEVE (4") CENTERED WITHIN WALL. DEVICE FLANGES SPIN CLOCKWISE ONTO DEVICE THREADS OVER SMOKE GASKET, BUTTING TIGHTLY TO BOTH SIDES OF WALL.
6. HILTI CFS-PL FIRESTOP PLUG (4") CUT TO FIT AROUND THE CABLE BUNDLE AND INSTALLED TIGHTLY WITHIN SLEEVE, FLUSH WITH THE END OF THE SLEEVE ON BOTH SIDES OF THE WALL.

**NOTES :** 1. MAXIMUM DIAMETER OF OPENING = 5".  
 2. ANNULAR SPACE BETWEEN PENETRANTS = NOMINAL 0".  
 3. ANNULAR SPACE BETWEEN DEVICE AND PERIPHERY OF OPENING = MINIMUM 0", MAXIMUM 1".

 <b>Hilti Firestop Systems</b>	HILTI, Inc. Plano, Texas USA (800) 879-8000	Sheet 1 of 1	Drawing No. <b>WJ 8068a</b>
		Scale 9/64" = 1"	
		Date Sep. 14, 2017	
<b><i>Saving Lives through Innovation and Education</i></b>			