

UL/cUL SYSTEM NO. W-L-2676

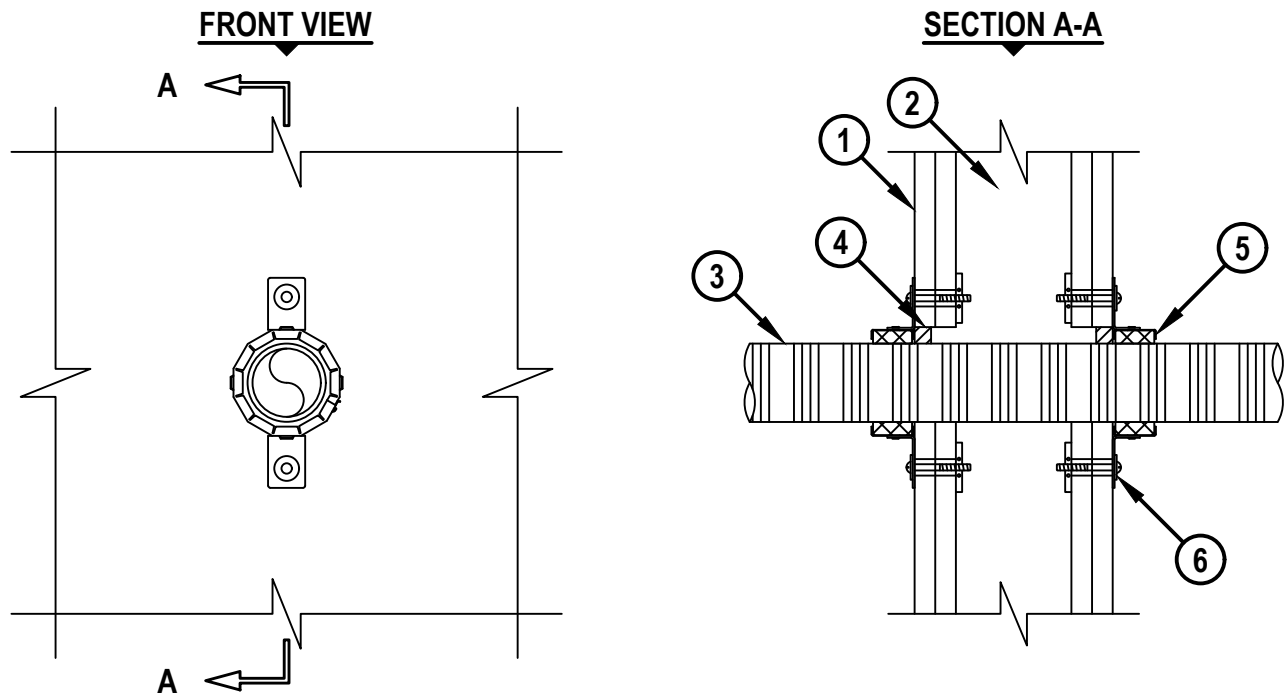
PLASTIC PIPE THROUGH GYPSUM WALL ASSEMBLY

F-RATING = 1-HR. OR 2-HR.

T-RATING = 0-HR. OR 1-1/2-HR.

NOTE : TESTED WITH A 50 Pa PRESSURE DIFFERENTIAL

WL2676a.090517



1. GYPSUM WALL ASSEMBLY (UL/cUL CLASSIFIED U300, U400, V400, OR W400 SERIES) (1-HR. OR 2-HR. FIRE-RATING) (2-HR. SHOWN).
2. [NOT SHOWN] WOOD STUDS TO CONSIST OF NOMINAL 2" x 4" LUMBER (SPACED MAXIMUM 16" OC). STEEL STUDS TO BE MINIMUM 3-1/2" WIDE (SPACED MAXIMUM 24" OC).
3. MAXIMUM 2" NOMINAL DIAMETER ENT.
4. MINIMUM 1/2" DEPTH HILTI FS-ONE MAX INTUMESCENT FIRESTOP SEALANT.
5. HILTI CP 643N FIRESTOP COLLAR WITH FASTENING HOOKS.
6. ATTACH EACH FASTENING HOOK TO WALL ASSEMBLY WITH HILTI 3/16" TOGGLER BOLTS AND WASHERS OR NOMINAL 1-1/4" LONG DRYWALL SCREWS WITH 3/4" STEEL WASHERS.

NOTES : 1. MAXIMUM DIAMETER OF OPENING = 2-7/8".
2. ANNULAR SPACE = MINIMUM 0", MAXIMUM 1/2".

HILTI
Hilti Firestop Systems

HILTI, Inc.
Plano, Texas USA (800) 879-8000

Sheet	1 of 1
Scale	11/64" = 1"
Date	Sep. 05, 2017

Drawing No.

WL
2676a

Saving Lives through Innovation and Education