

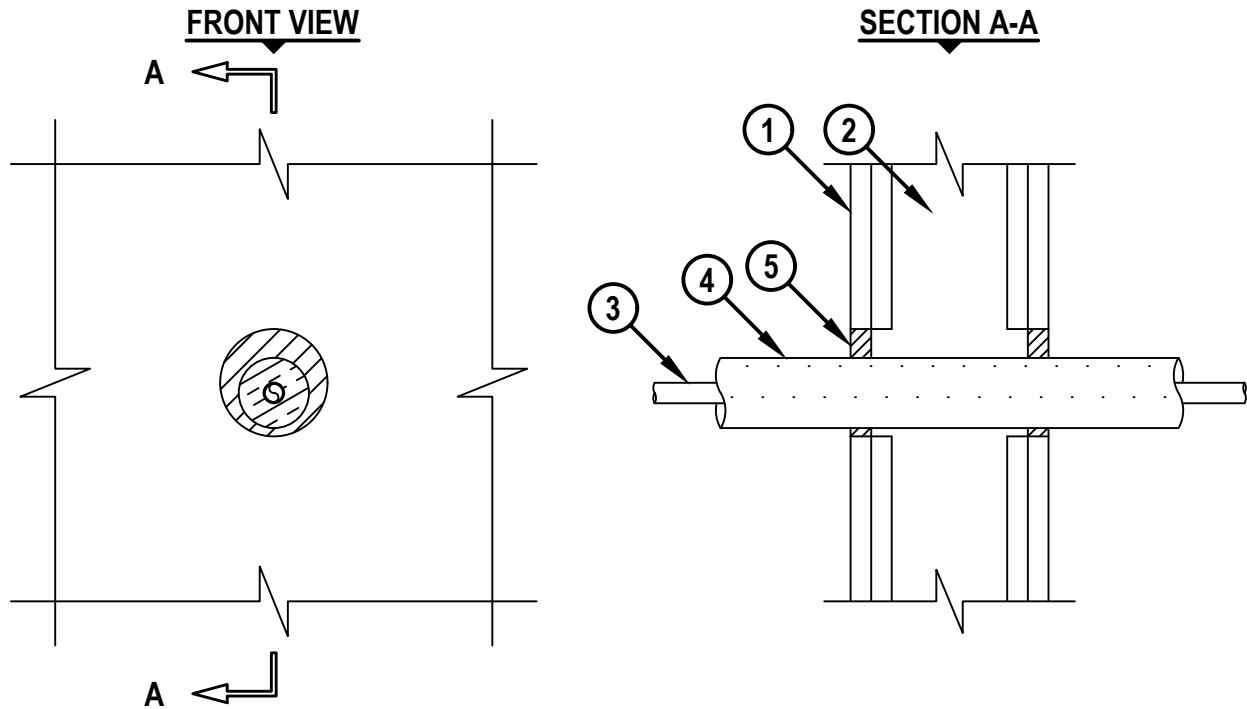
UL SYSTEM NO. W-L-5342

INSULATED PLASTIC PIPE THROUGH GYPSUM WALL ASSEMBLY

F-RATING = 1-HR. OR 2-HR.

T-RATING = 1-HR. OR 2-HR.

WL5342a.090717



1. GYPSUM WALL ASSEMBLY (UL CLASSIFIED U300, U400, V400, OR W400 SERIES) (1-HR. OR 2-HR. FIRE-RATING) (2-HR. SHOWN).
2. [NOT SHOWN] WOOD STUDS TO CONSIST OF NOMINAL 2" x 4" LUMBER (SPACED MAXIMUM 16" OC). STEEL STUDS TO BE MINIMUM 3-1/2" WIDE (SPACED MAXIMUM 24" OC).
3. MAXIMUM 1/2" NOMINAL DIAMETER PEX TUBING (SDR 9) (CLOSED PIPING SYSTEM ONLY).
4. NOMINAL 3/4" THICK AB/PVC PIPE INSULATION.
5. MINIMUM 5/8" DEPTH HILTI FS-ONE MAX INTUMESCENT FIRESTOP SEALANT.

NOTES : 1. MAXIMUM DIAMETER OF OPENING = 3-1/4".
2. ANNULAR SPACE = MINIMUM 1/4", MAXIMUM 7/8".

HILTI
Hilti Firestop Systems

HILTI, Inc.
Plano, Texas USA (800) 879-8000

Sheet 1 of 1
Scale 11/64" = 1"
Date Sep. 07, 2017

Drawing No.
WL
5342a

Saving Lives through Innovation and Education