



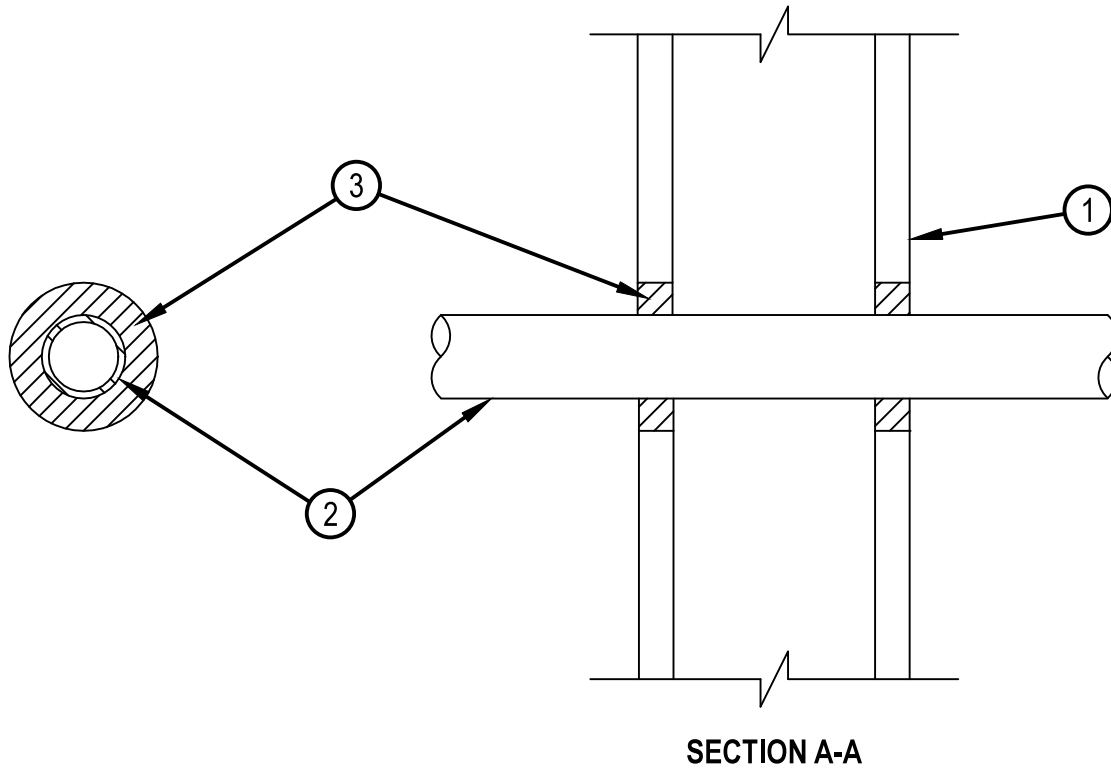
Underwriters Laboratories, Inc.  
to UL 1479

## System No. W-L-2196

F Rating — 1 Hr

T Rating — 1/2 Hr

WL 2196



1. Wall Assembly — The 1 hr fire rated wallboard/stud wall assembly shall be constructed of the materials and in the manner specified in the individual U300, U400, V400 or W400 Series Wall and Partition Designs in the UL Fire Resistance Directory and shall include the following construction features.
    - A. Studs — Wall framing shall consist of either wood studs or steel channel studs. Wood studs to consist of nom 2 by 4 in. (51 by 102 mm) lumber spaced 16 in. (406 mm) OC. Steel studs to be min 2-1/2 in. (64 mm) wide and spaced max 24 in. (610 mm) OC.
    - B. Gypsum Board\* — One layer of nom 5/8 in. (16 mm) thick gypsum wallboard, as specified in the individual U300 or U400 Series Design in the Fire Resistance Directory. Max diam of opening is 3 in. (76 mm).
  2. Nonmetallic Pipe — Nom 1-1/2 in. (38 mm) diam (or smaller) cellular or solid core Schedule 40 Acrylonitrile Butadiene Styrene (ABS) pipe for use in closed (process or supply) or vented (drain, waste or vent) piping systems, installed either concentrically or eccentrically within the firestop system. The annular space between the pipe and the edge of opening shall be min 3/8 in. (10 mm) to max 3/4 in. (19 mm). Pipe to be rigidly supported on both sides of wall assembly.
  3. Fill, Void or Cavity Material\* — Sealant — Min 5/8 in. (16 mm) thickness of fill material applied within the annulus, flush with both surfaces of wall.  
HILTI INC — FS-ONE Sealant or FS-ONE MAX Intumescent Sealant
- \* Indicates such products shall bear the UL or cUL Certification Mark for jurisdictions employing the UL or cUL Certification (such as Canada), respectively.



**Hilti Firestop Systems**

Reproduced by HILTI, Inc. Courtesy of  
Underwriters Laboratories, Inc.

January 22, 2015