

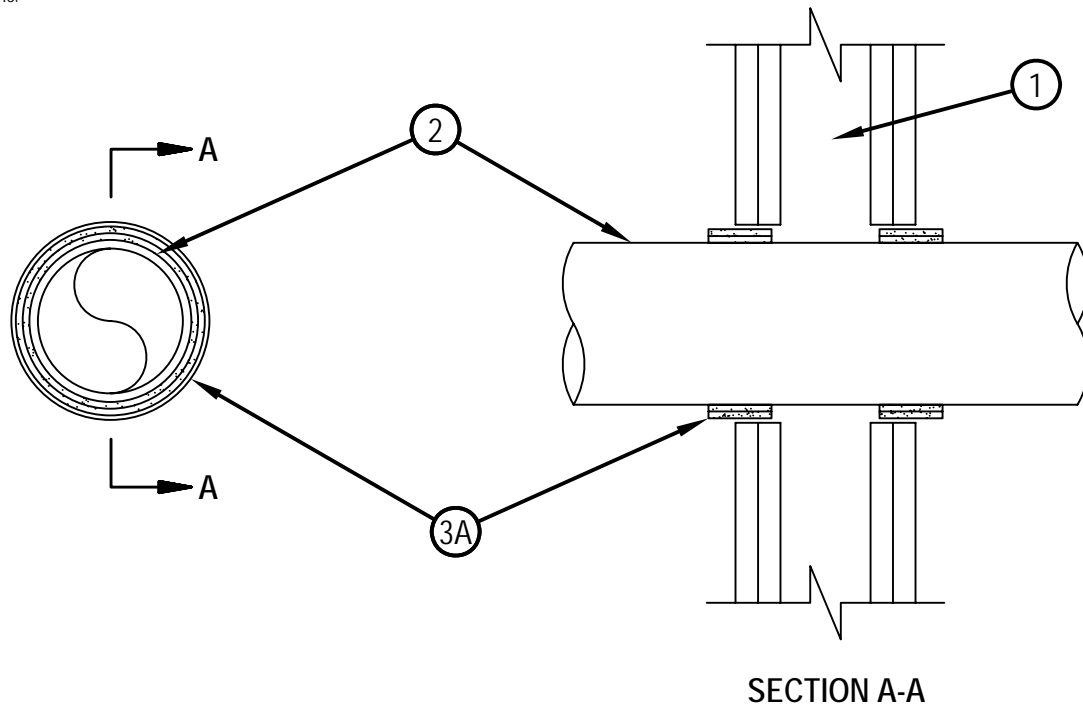


Classified by
Underwriters Laboratories, Inc.
to UL 1479

System No. W-L-2344

F Rating - 2 Hr
T Rating - 2 Hr

WL 2344



1. Wall Assembly -- The 2 hr fire-rated gypsum board/stud wall assembly shall be constructed of the materials and in the manner specified in the individual U300 or U400 Series Wall and Partition Designs in the UL Fire Resistance Directory and shall include the following construction features:
 - A. Studs -- Wall framing shall consist of either wood or steel channel studs. Wood studs to consist of nom 2 by 4 in. lumber spaced 16 in. OC. Steel studs to be min 2-1/2 in. wide and spaced max 24 in. OC.
 - B. Gypsum Board* -- Min 5/8 in. thick, 4 ft wide with square or tapered edges. The gypsum board type, thickness, number of layers and orientation shall be as specified in the individual U300 or U400 Wall and Partition Design. Max diam of opening is 5-1/2 in.
2. Through Penetrants -- One nonmetallic pipe to be centered within the firestop system. A nom annular space of 3/8 to 1/2 in. is required within the firestop system. Pipe to be rigidly supported on both sides of wall assembly. The following types and sizes of nonmetallic pipes may be used:
 - A. Acrylonitrile Butadiene Styrene (ABS) Pipe -- Nom 4 in. diam (or smaller) Schedule 40 cellular or solid core ABS pipe for use in closed (process or supply) or vented (drain, waste or vent) piping systems.
 - B. Polyvinyl Chloride (PVC) Pipe -- Nom 4 in. diam (or smaller) Schedule 40 cellular or solid core PVC pipe for use in closed (process or supply) or vented (drain, waste or vent) piping systems.
 - C. Chlorinated Polyvinyl Chloride (CPVC) Pipe -- Nom 4 in. diam (or smaller) SDR 13.5 CPVC pipe for use in closed (process or supply) piping systems.
3. Firestop System -- The firestop system shall consist of the following:
 - A. Fill, Void or Cavity Material* - Wrap Strip -- Two layers of nom 3/16 in. thick by 1-3/4 in. wide intumescent wrap strip individually wrapped around the outer circumference of the pipe and slid into the annular space such that wrap strip extends 3/4 in. beyond both surfaces of wall. Butted ends in successive layers shall be offset. Wrap strip secured with tape, wire or tie wire.
HILTI CONSTRUCTION CHEMICALS, DIV OF HILTI INC -- CP648-E W45/1-3/4" Wrap Strip

*Bearing the UL Classification Mark



Hilti Firestop Systems

Reproduced by HILTI, Inc. Courtesy of
Underwriters Laboratories, Inc.

April 22, 2005