

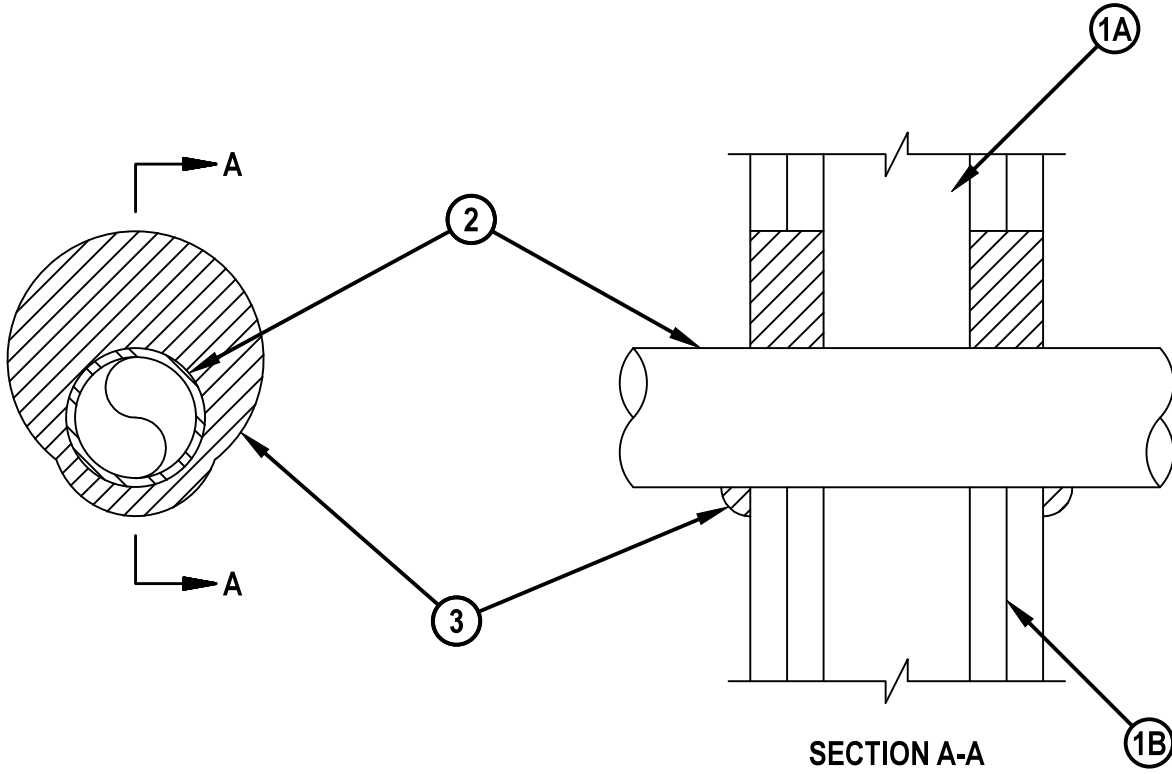


Underwriters Laboratories, Inc.  
to UL 1479

## System No. W-L-2377

F Ratings - 1 and 2 Hr (See Items 1 and 3)  
T Ratings - 1 and 2 Hr (See Items 1 and 3)  
L - Rating at Ambient - Less than 1 CFM/Sq Ft  
L - Rating at 400°F - 4 CFM/Sq Ft

WL 2377



1. Wall Assembly — The 1 and 2 hr fire rated gypsum board/stud wall assembly shall be constructed of the materials and in the manner described in the individual U300, U400, V400 or W400 Series Wall or Partition Design in the UL Fire Resistance Directory and shall include the following construction features:

A. Studs — Wall framing shall consist of either wood studs or steel channel studs. Wood studs to consist of nom 2 by 4 in. (51 by 102 mm) lumber spaced 16 in. (406 mm) OC. Steel studs to be min 2-1/2 in. (64 mm) wide by 1-3/8 in. (35 mm) deep channels spaced max 24 in. (610 mm) OC.

B. Gypsum Board\* — The gypsum wallboard type, thickness, number of layers, fastener type and sheet orientation shall be as specified in the individual U300 or U400 Series Design in the UL Fire Resistance Directory. Max diam of opening is 3 in. (76 mm).

The hourly F and T Rating of the firestop system is equal to the hourly fire rating of the wall assembly in which it is installed.

2. Through Penetrant — One nonmetallic pipe, conduit or tubing installed either concentrically or eccentrically within the firestop system. The annular space between pipe and periphery of opening shall be min of 0 in. (point contact) to a max 1-1/4 in. (32 mm). Pipe to be rigidly supported on both sides of wall assembly. The following types and sizes of nonmetallic pipes may be used:

A. Chlorinated Polyvinyl Chloride (CPVC) Pipe — Nom 2 in. (51 mm) diam (or smaller) FLOWGUARD GOLD® SDR11 CPVC pipe for use in closed (process or supply) piping systems.

B. Chlorinated Polyvinyl Chloride (CPVC) Pipe — Nom 2 in. (51 mm) diam (or smaller) BLAZEMASTER® SDR13.5 CPVC pipe for use in closed (process or supply) piping systems.

3. Fill, Void or Cavity Material\* - Sealant — Min 5/8 in. (16 mm) and 1-1/4 in. (32 mm) thickness of fill material applied within annulus, flush with both surfaces of wall for 1 and 2 hr rated assemblies, respectively. At point contact location, a min 1/2 in. (13 mm) diam bead of fill material shall be applied to the wall/penetrant interface on both surfaces of the wall.

HILTI CONSTRUCTION CHEMICALS, DIV OF HILTI INC — FS-ONE Sealant or FS-ONE MAX Intumescent Sealant

\* Indicates such products shall bear the UL or cUL Certification Mark for jurisdictions employing the UL or cUL Certification (such as Canada), respectively.



Hilti Firestop Systems

Reproduced by HILTI, Inc. Courtesy of  
Underwriters Laboratories, Inc.

January 28, 2015