

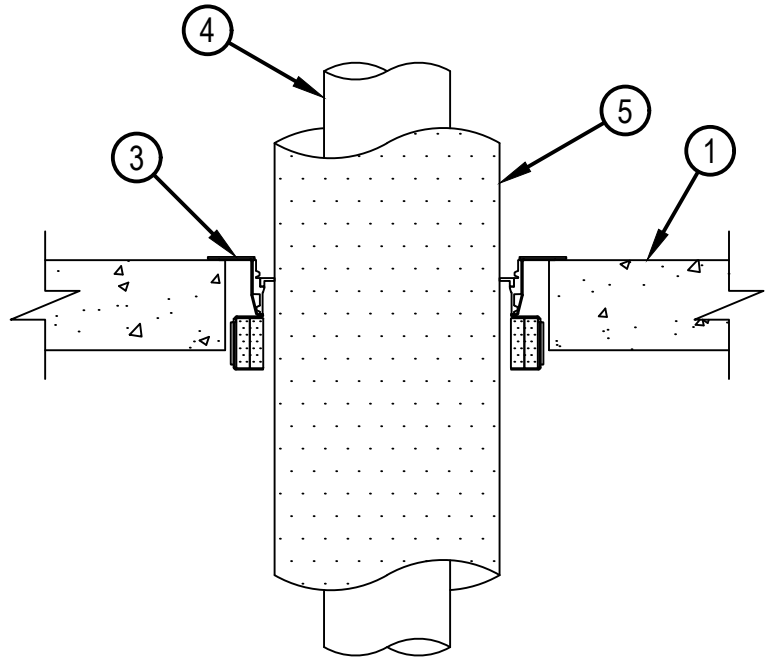
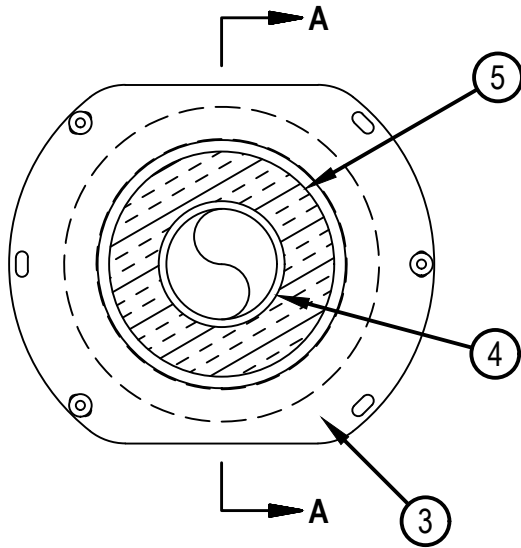


Classified by
Underwriters Laboratories, Inc.
to UL 1479

System No. F-A-5055

F Rating - 2 Hr
T Rating - 0 and 1/2 Hr (See Item 2)

FA 5055



SECTION A-A



Reproduced by HILTI, Inc. Courtesy of
Underwriters Laboratories, Inc.
November 29, 2016

System No. F-A-5055

FA 5055

1. Floor Assembly — Min 2-1/2 in. (64 mm) to max 8 in. (203 mm) thick reinforced lightweight or normal weight (100-150 pcf or 1600-2400 kg/m³) concrete. Max diam of opening is 9 in. (229 mm).
2. Metallic Sleeve — (Optional, Not Shown) - Nom 9 in. (229 mm) diam Schedule 10 (or heavier) steel sleeve cast or grouted into floor assembly, flush with floor surfaces. When metallic sleeve is used, the T, FT and FTH Ratings are 0 Hr.
- 2A. Sheet Metal Sleeve — (Optional, Not Shown) - Nom 9 in. (229 mm) diam, min 26 ga galv steel provided with a 26 ga galv steel square flange spot welded to the sleeve at approx mid-height, or flush with bottom of sleeve in floors, and sized to be a min of 2 in. (51 mm) larger than the sleeve diam. The sleeve is to be cast in place and may extend a max of 4 in. (102 mm) below the bottom of the deck and flush with the top surface of the concrete floor. When sheet metal sleeve is used, the T, FT and FTH Ratings are 0 Hr.
3. Firestop Device* — Drop-in firestop device installed in core-drilled or sleeved opening in concrete floor assembly in accordance with accompanying installation instructions. The firestop device flange should be secured to the top surface of the floor with three 1/4 in. (6 mm) diam by min 1-1/4 in. (32 mm) long steel expansion bolts or screw anchors (installed in a triangular fashion through holes provided). As alternates to the anchors specified above, Hilti 1/4 in. (6 mm) diam by 1-1/4 in. (32 mm) long KWIK-CON II+ concrete screw anchor, Hilti 1/4 in. (6 mm) diam by 1-3/4 in. (45 mm) long KWIK-BOLT 3 steel expansion anchor or Hilti 1/4 in. (6 mm) by 3/4 in. (19 mm) long Metal HIT Anchor may be used. In addition, for nom 2 in. (51 mm), 3 in. (76 mm) and 4 in. (102 mm) firestop devices, four 11/16 in. (18 mm) long Hilti X-GH P18 MX steel fasteners may be installed through the steel flange, two on each side. The firestop devices shall be installed as detailed in the following table:

Core Hole or Sleeve Diam, In. (mm)	Firestop Device	Nom Diam of Through Penetrant, In. (mm)	Insulation Thickness, In. (mm)
9 (152)	CFS-DID 6"MD	3 (90)	1 (25)
9 (229)	CFS-DID 6"MD	2 (63)	2 (51)

Note: Metric dimensions shown in parenthesis are actual metric OD's marked on pipe.
 HILTI CONSTRUCTION CHEMICALS, DIV OF HILTI INC — CFS-DID 6"MD

4. Through Penetrants — One nonmetallic pipe to be installed within the firestop system. Pipe to be rigidly supported on both sides of floor assembly. The following types and sizes of nonmetallic pipes may be used:
 - A. Polypropylene Random (PP-R) Pipe — Nom 2 in. (63 mm) or 3 in (90 mm) diam SDR 7.4 Aquatherm Green pipe for use in closed (process or supply) piping systems.
5. Pipe Covering* — Nom 1 or 2 in. (25 or 51 mm) thick hollow cylindrical heavy density (min 3.5 pcf or 56 kg/m³) glass fiber units, jacketed on the outside with an all service jacket. Longitudinal joints sealed with metal fasteners or factory-applied SSL tape. Transverse joints secured with metal fasteners or with butt tape supplied with the product.

See Pipe and Equipment Covering-Materials (BRGU) category in the Building Materials Directory for names of manufacturers. Any pipe covering material meeting the above specifications and bearing the UL Classification Marking with a Flame Spread Index of 25 or less and a Smoke Developed Index of 50 or less may be used.

* Indicates such products shall bear the UL or cUL Certification Mark for jurisdictions employing the UL or cUL Certification (such as Canada), respectively.



Reproduced by HILTI, Inc. Courtesy of
 Underwriters Laboratories, Inc.
 November 29, 2016